



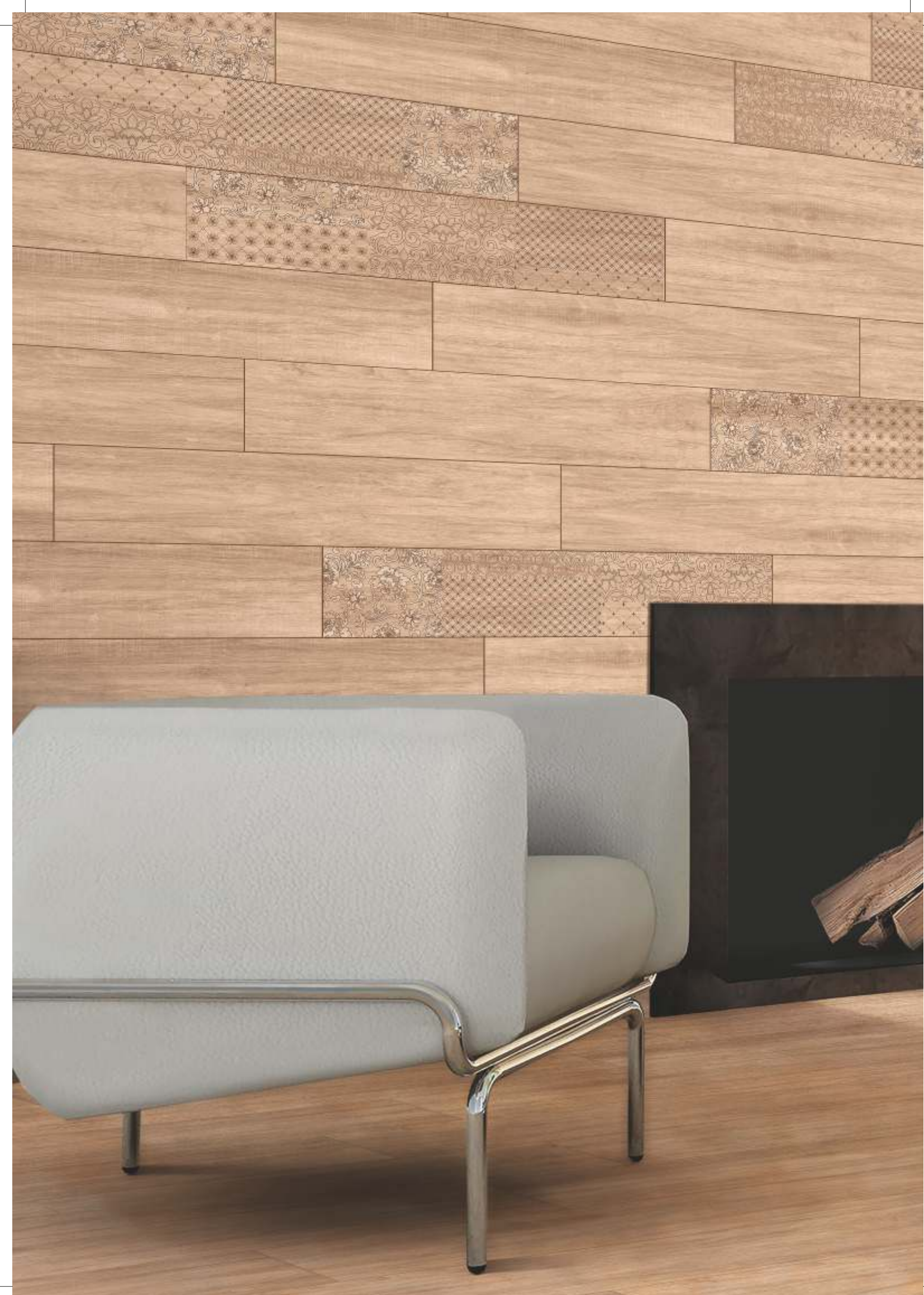
 **JOHNSON[®]TILES**
NOT JUST TILES, LIFESTYLES.[®]

FLOOR TILE COLLECTION

Elite Plus, Elite & Basic

20.3x100.7cm, 60x60cm,
40x40cm & 30x30cm

JOHNSON



FLOOR TILES COLLECTION

Johnson Tiles - Durable & Classy

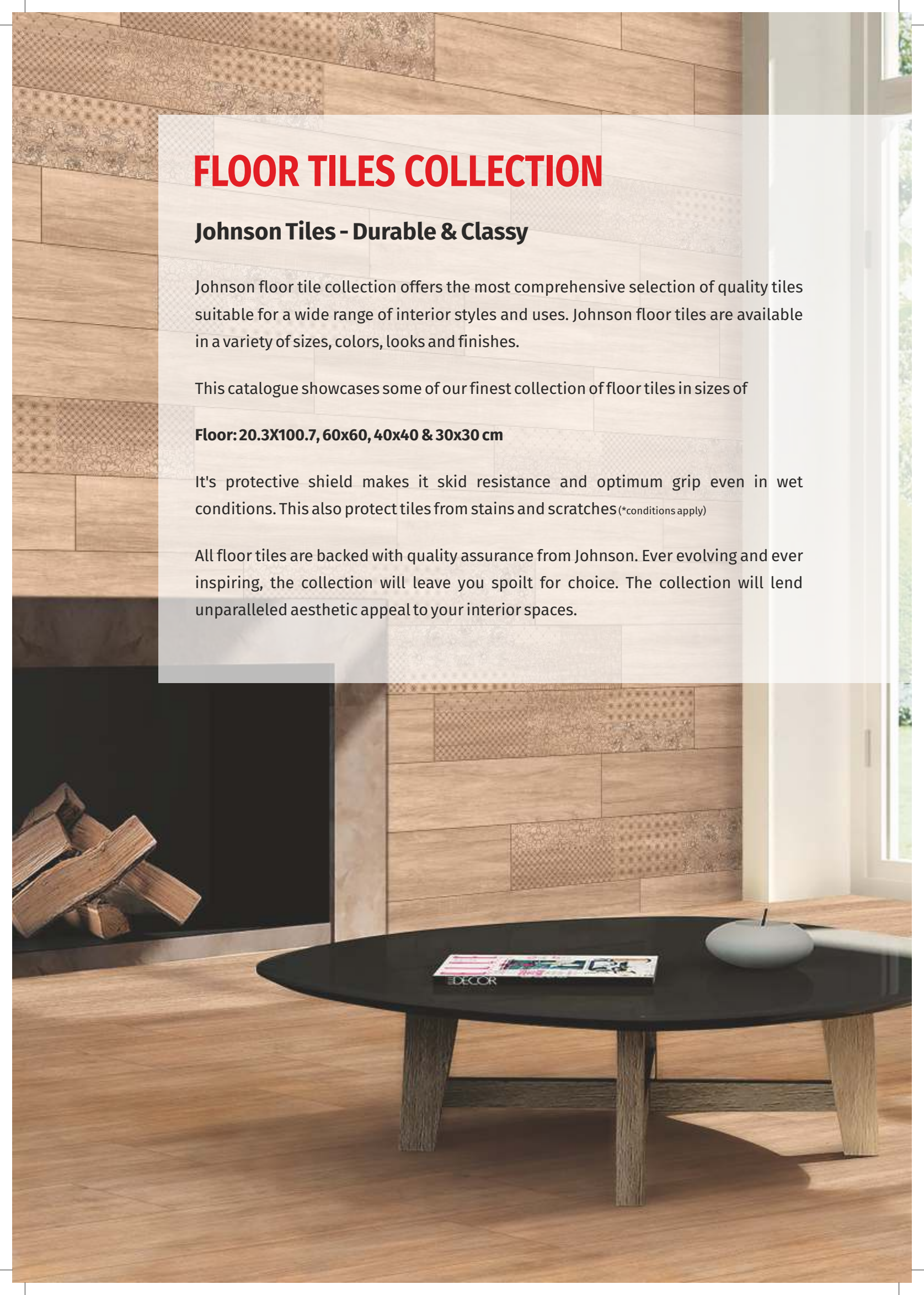
Johnson floor tile collection offers the most comprehensive selection of quality tiles suitable for a wide range of interior styles and uses. Johnson floor tiles are available in a variety of sizes, colors, looks and finishes.

This catalogue showcases some of our finest collection of floor tiles in sizes of

Floor: 20.3X100.7, 60x60, 40x40 & 30x30 cm

It's protective shield makes it skid resistance and optimum grip even in wet conditions. This also protect tiles from stains and scratches (*conditions apply)

All floor tiles are backed with quality assurance from Johnson. Ever evolving and ever inspiring, the collection will leave you spoilt for choice. The collection will lend unparalleled aesthetic appeal to your interior spaces.



DOWN
EX

FLOOR

20.3x100.7 cm

Matt 06

60x60 cm

Vitrified Carwing 08

Vitrified Polished 10

Vitrified Matt 12

Matt Sugar 18

Matt Rustic 20

Matt Raindrop 22

SSR (Matt) 24

Matt 26

40x40 cm

Matt 32

Matt - HT 34

30x30 cm

Plain/Print 38

Dual Quartz 40

Rectified 42

Rustic 44

Technical Details 50

Contact Details 53



AXIS BROWN WOOD*



BANER BEIGE WOOD*



CAPTOR WINE WOOD*



FELOR LATTE WOOD*



GENZO COFFEE WOOD*



KENTON PECAN WOOD*



MAXINE TAWNY WOOD*



ONTOR COFFEE WOOD*



PHUKET BROWN WOOD*



TEXAN BIANCO WOOD*

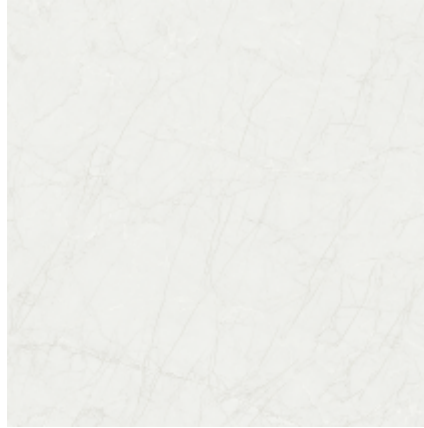


TEXAN GREY WOOD*





ALONZ SILVER*



BELIZE GREY*



FRATER CREMA*



HAWAII BEIGE



LINZ STATURIO





JACK PINE WOOD



ABBER BEIGE*



ABBER GREY*



ALBERTA WHITE



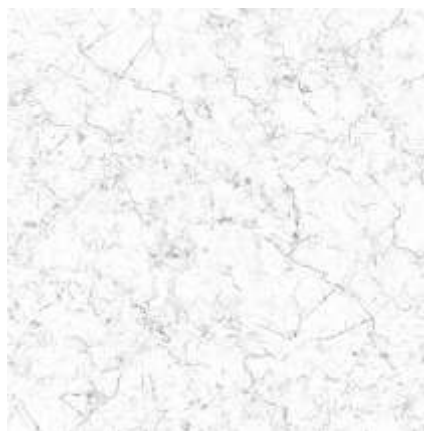
ALEXIA GREY*



ALLIX STATUARIO*



ARANA TAN



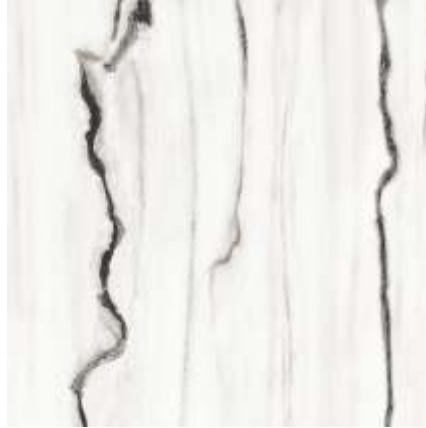
BLANCH PEARL



BOLSON SNOW*



CRISTIN GRIS*



DELIUS PEARL*



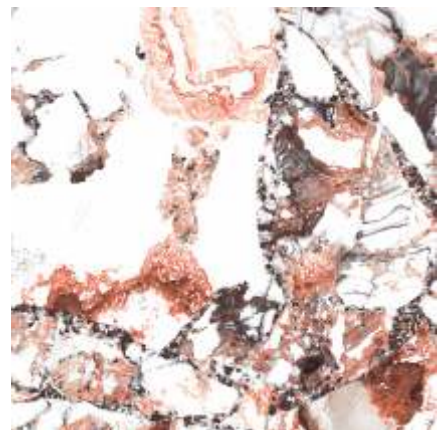
DIANAZ CARE



EABURN CREAM*



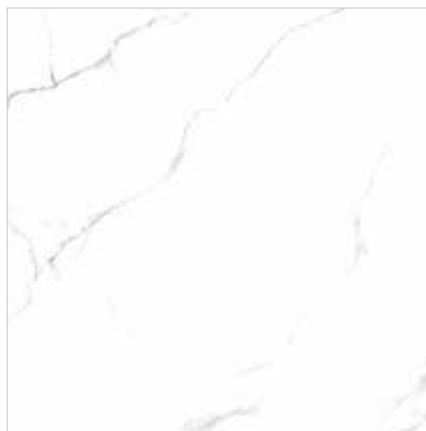
EASTERN BIANCO



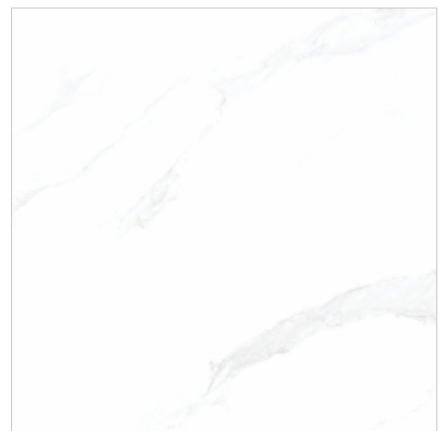
FLEMISH RED



FREWIN CREMA*



GALLIER STATUARIO*



GREENO CARRARA*



HALTON CREMA*



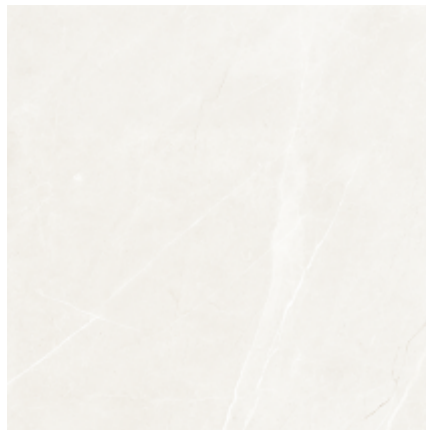
IBITT BROWN*



INGRAM BEIGE*



IWAN CARARA*



JAKINS BIANCO*



KALYSTA GREY



KENNEL BLUE*



KENNEL SILVER*



LIVONIA PEARL



LORIANE WHITE



MAINEZ BEIGE*



MAINEZ GREY*



MINTER BROWN*



NIXON IRON



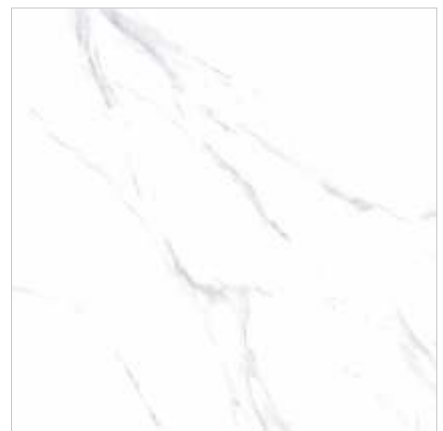
NORLAND BEIGE



OLBIA BEIGE



PRETONE SILVER



QUTALIA STATUARIO*



RENOIR STATUARIO*



RINGLE BEIGE*



SCUTT MOCHA*



SENTILIA GREY



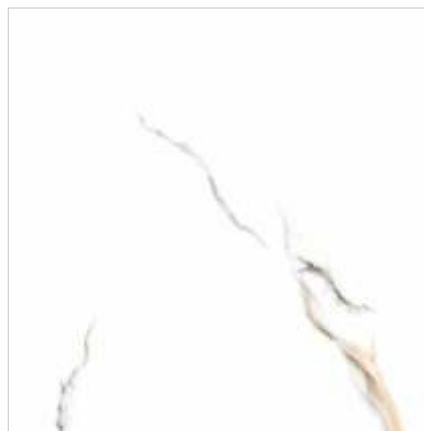
SPIRINO SILVER



TANSY BUFF



TASSEL BIANCO*



TERELL WHITE



THUNDER GREY





BLOXAM LIME*



CAPLICE NERO



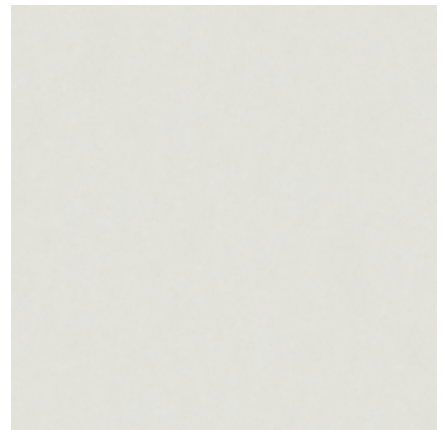
DISTON SILVER



GORSIA BIANCO



ILIFF BEIGE



ILIFF BIANCO



ILIFF BLUE



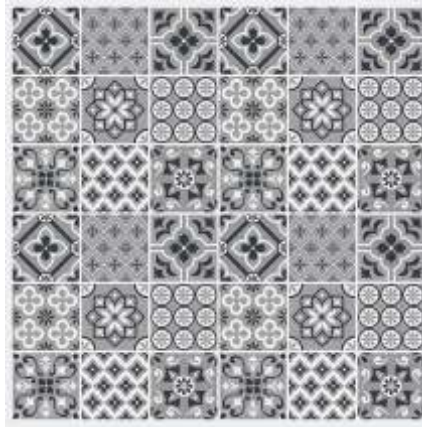
ILIFF CREAM



ILIFF LIME



JOHNES BEIGE



LANNEN GREY



NEIL PISTA



RENCHER BEIGE*



SALTEN BROWN*



SALTEN NERO*



TAMBER GREY



UNETT BLANCO*



COSTA WOOD BEIGE



COSTA WOOD CREMA



COSTA WOOD WENGE



ALVIN BIANCO



ALVIN GREY



BELMEN BEIGE



BELMEN BIANCO



BELMEN BRONZ



BELMEN BROWN





CHINN WOOD BROWN



CHINN WOOD CREMA



ABBINETT BEIGE



ABBINETT CHOCO



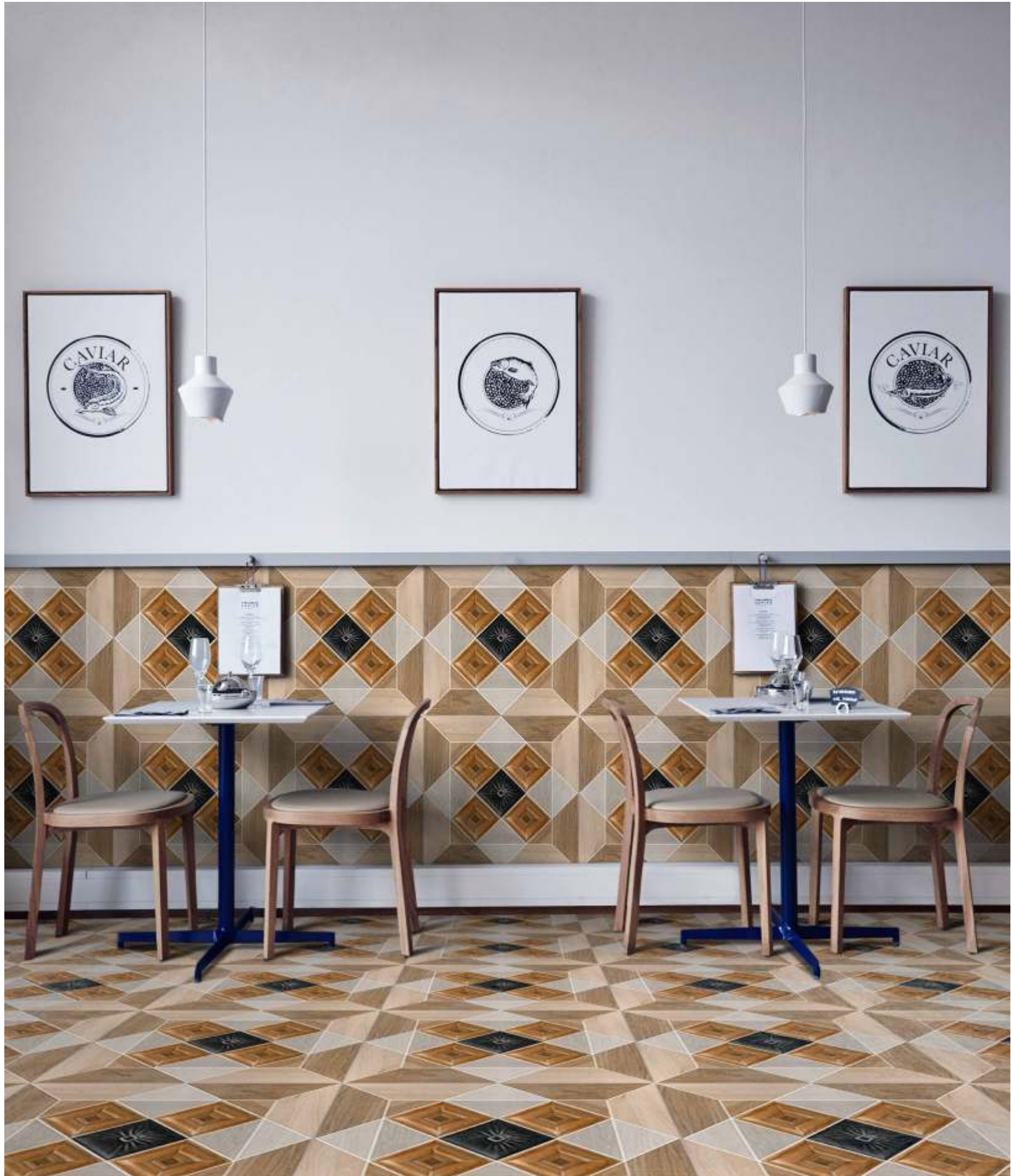
BELSTEN BROWN



BELSTEN CHOCO



BELSTEN MIX





DANE WOOD BRONZE



DANE WOOD CHOCO



ECCLESS BEIGE



ECCLESS BIANCO



ECCLESS BLUE



ECCLESS BROWN



ECCLESS CHOCO



ECCLESS CREMA



ECCLESS GREY





BERMUDA ROSE



LENOX VERDE



SANDUNE BEIGE



SANDUNE CREMA



SANDUNE GREY



ZANE CRÈME





ACRILL WOOD BROWN



ASTLEY WOOD WENGE



BASSWOOD BROWN



BROWER WOOD BEIGE



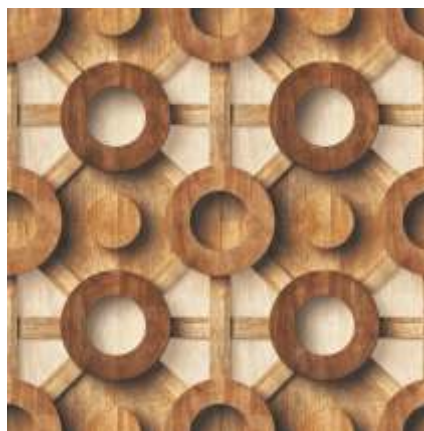
DIMAS WOOD



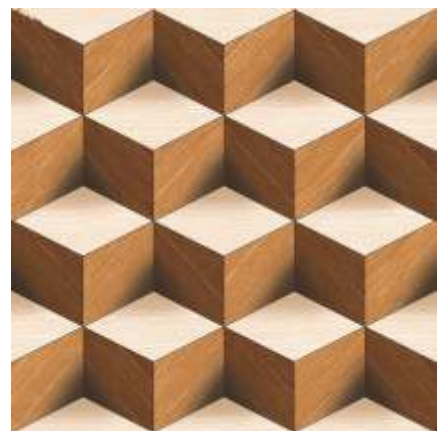
DUKE WOOD BROWN



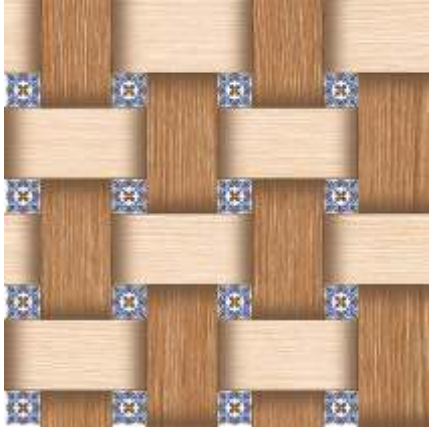
DUKE WOOD CHOCO



ELMIA CHOCO



ELVER WOOD BROWN



FELTER WOOD BROWN



HAMMER BRUNO



HAVEN WOOD



KASHMIR WOOD



KATIE CREAM



KITTS WOOD BEIGE



LANIER WOOD WENGE



NIETO WOOD CREMA



OCTAL BLUE



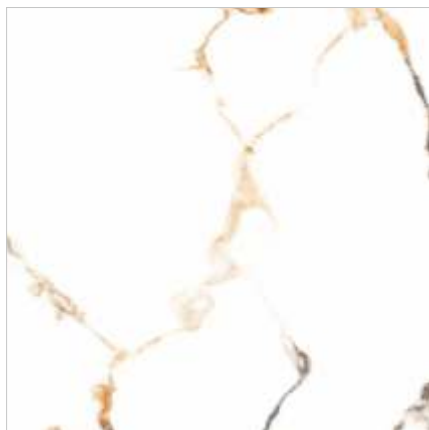
PLANK NATURAL



TORRENCE ASHWOOD



WOOD MAPPLE



ARBESCATO GOLD*



ARBESCATO WHITE*



BALANCE CREMA



BURBERRY



CAIRO



CLOUDY SQUARE



COLABA COFFEE



DARTER BIANCO



DARTER CREMA



DIVIAN ASH*



DIVIAN BEIGE*



DIVIAN GREY*



DYNA DEEP



ELVER CREAM



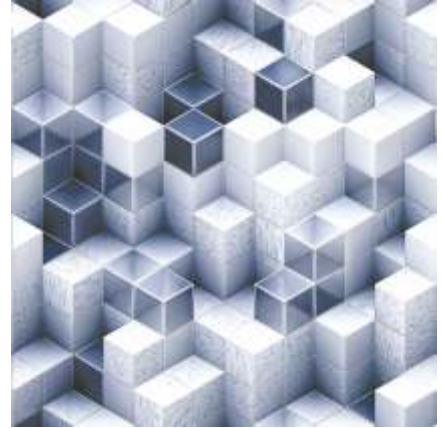
ELVER GREY



GRANOLITE GREY



GRANOLITE WHITE



HARBON BLUE



MACHEN BROWN



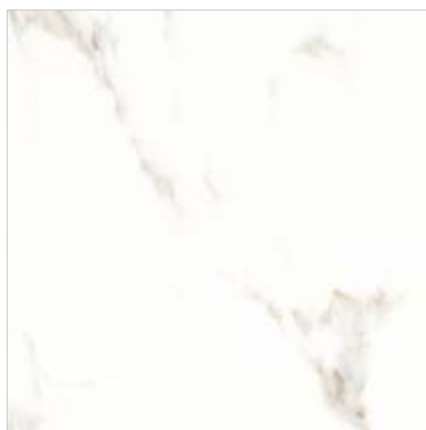
MANCER GREY



ORCHIN CREMA



ORCHIN GREY



OXFORD MARMOL



ROYAL DYNA MARFIL*



RUBIK



TRAVO MARBLE



* RANDOM PHASES ARE AVAILABLE



ANCARA IV BRN



ANCARA WH GY



APEX RUST



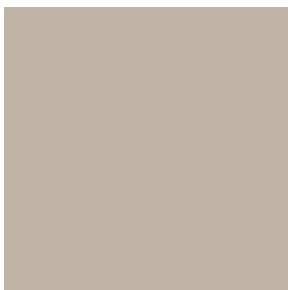
APEX SILVER



BOTTICINO IV BR



IRIS IV BR



IVORY



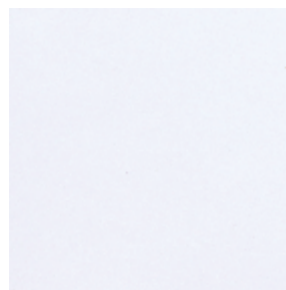
MAVIK BASE



NEVADA IV BR



NEVADA WH GY



WHITE





BRICH ROSSO



BURNS BROWN



BURNS CEDAR*



BURNS GREY



BURNS NERO*



BURNS VERDE



CEDRIC ASH*



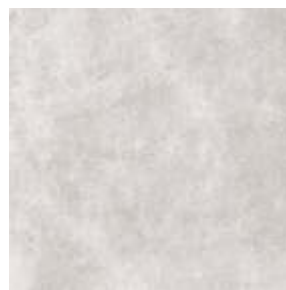
CEDRIC BEIGE*



CEDRIC BRONZE*



CEDRIC GREY*



CEDRIC SILVER*



ETHAN BRUNO (P)



ETHAN MIX (P)



FABRIC BROWN



FABRIC CREMA



FABRIC GREY



FLORAL GREY



HOUSTON CREMA



HOUSTON NERO



JOEL BEIGE



JOEL BIANCO



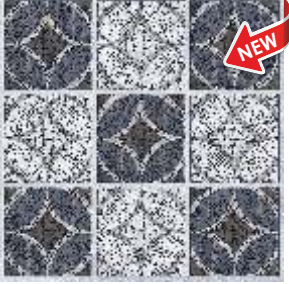
JOEL BRUNO



JOEL GREY



JOEL MOCHA



PIXEL MOSAIC



RETRO BEIGE



RETRO BRONZE



RETRO DECOR*



RETRO FUME



RETRO GRASS



RETRO GRASS MIX



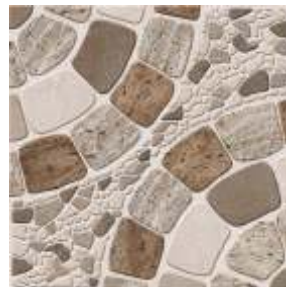
RETRO GRIS



RETRO ORNA



RETRO SLATE



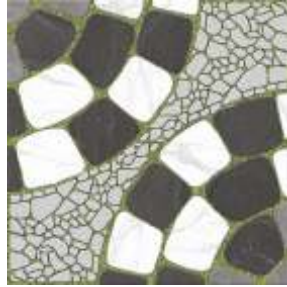
SNYDAR BRONZE



SNYDAR CEDAR



SNYDAR MIX



SNYDAR NERO



VENEZIA GREY

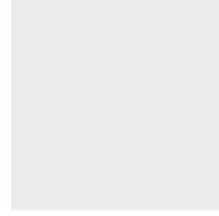




ANCARA WH GY



DERBY BROWN



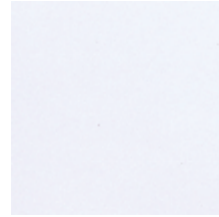
GREY



IRIS IVORY BROWN



IVORY



WHITE





GREEN



GREY



IVORY



PEACH



PINK



SAND BROWN



WHITE





LENOX BLANCO



LENOX BLUE



LENOX BROWN



LENOX CREMA



LENOX GRIS



LENOX LAVENDER



LENOX PINK



LENOX TAN



LENOX VERDE





BOLTON BEIGE



BOLTON BLUE



BOLTON COFFEE



BOLTON COTTO



BOLTON CRÈME



BOLTON STONE



BOLTON TAN



BOLTON VERDE



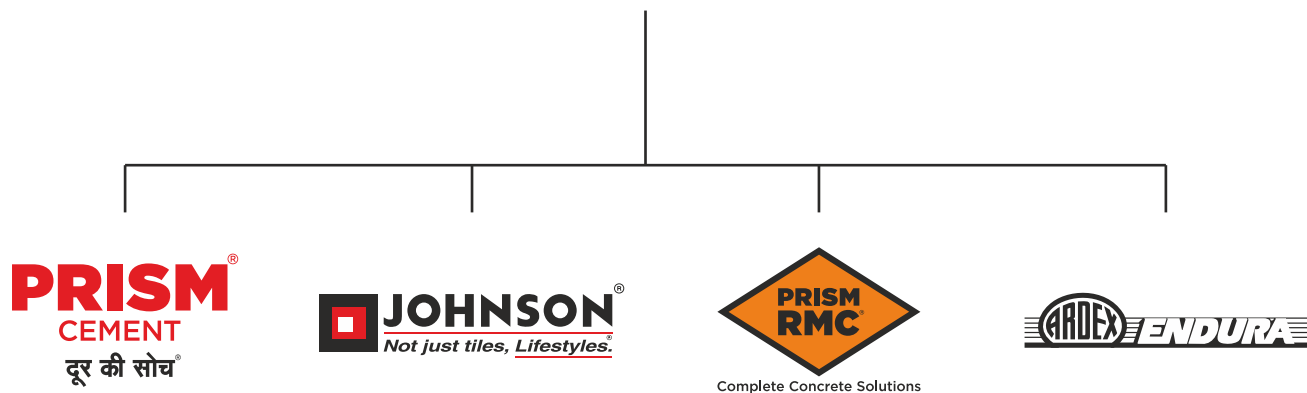
SKODA COFFEE



A journey from tiles to lifestyles - measured in square feet

H&R Johnson (India) is a division of Prism Johnson Limited, one of India's foremost Integrated Building Materials conglomerates.

PRISM JOHNSON LIMITED



Established in 1958, Johnson is one of the oldest and trusted brands in the country. Built on the strong and unswerving foundations of quality and innovation, this trust has only grown in these decades gone by; and continues to grow. Starting with tiles, the brand soon diversified into offering lifestyle solutions in the realms of Engineered Marble & Quartz and Bath Solutions. There by becoming India's most Integrated Lifestyle Solutions brand. Every product that comes bearing the H&R Johnson insignia is a symbol of the same quality and innovation focused on adding value to the lives of our consumers.

Pioneering Innovations, A Way of Life

At H&R Johnson the term innovation is at the heart of everything we do. That's why it is backed by credible research. Every product attempts to fill in a void left by conventional offerings in the category, in an innovative manner. It's this value we place on cutting-edge innovation that makes us strive for more and eventually deliver more. A quality and a way of working that has redefine consumer lifestyles and expectations.

- Anti-skid & Water-repellent Tiles for Bathrooms
- Rectified Wall Tiles
- Johnson Marbonite - Vitrified Wall and Floor Tiles
- Joint Free Tiles
- Large Format Slabs
- Digitally Printed Wall & Floor Tiles
- Germ Free Tiles & Sanitaryware
- Exterior & Industrial Flooring Solutions

India's Most Integrated Tile Manufacturing Company



Self-owned Felspar Mines



Making Punches & Dies



Manufacturing of Soluble Salts and Inks

Being India's most trusted tiling brand requires that trust to be maintained in every stage of developing each and every product that bears the name of the brand. That's why at H&R Johnson, our Felspar Mines are Self-owned, the soluble salts and inks are manufactured in-house, and even the dies and punches are made in-house. All, so that every step in the process comes with the same quality and assurance, that you expect from us.



Manufacturing Excellence

Johnson has the most modern manufacturing units across strategic locations in India. Our manufacturing facilities employ the best technology from world leaders in tile manufacturing equipment. All our plants are ISO compliant with both 9001 and 14001 certifications as well as OHSAS18001 certification.



Certifications



Johnson is India's largest tile manufacturer. It's commitment to quality, service and innovation is backed by certification from the world's leading accreditation bodies.

ISO 9001: 2015

For implementing a Quality Management System for the Manufacture and Supply of Ceramic Tiles.

ISO 45001: 2018

For implementing an Occupational Health & Safety Management System for the Manufacturing of Ceramic Tiles.

ISO 14001: 2015

For implementing an Environmental Management system for the Manufacturing of Ceramic Tiles

Certificate of Merit for Energy Conservation, Bureau of Energy Efficiency, Ministry of Power A Recognition for the efficient use of energy and its conservation.

Plant has received Safety award by National Safety Council

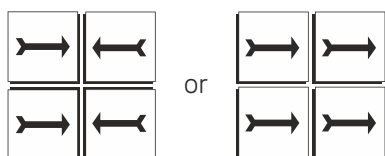
GreenPro is a product certification given by the Confederation of Indian Industry (CII) which signifies environmentally conscious life cycle of the production; certification for eco-friendly products that helps customers make an informed choice towards sustainable products.

Griha

Griha council is a joint initiative of Ministry of New and Renewable Energy, GOI and The Energy and Resources Institute of implement Griha. India's national rating system for sustainable habitats

Johnson Floor Tile Fixing Instructions

1. Plaster the surface to be tiled with a good finish and complete the rendering and curing at least two weeks prior to tiling. **DO NOT FIX TILES ON FRESH SURFACE.**
2. Before fixing the tiles, lay them out in the desired pattern and make sure that they give an acceptable blend of shade, colour and design. Also make sure that the tiles are acceptable to your satisfaction. Please note that certain amount of shade & size variation is inherent in all ceramic products.
3. The company bears no responsibility towards the tiles exposed to outside process like transfers, printing, firing etc.
4. For fixing these tiles, we recommend using an appropriate product from the range of tile fixing adhesives from the ARDEX ENDURA (INDIA) PVT. LTD. Please follow the adhesive manufacturer's recommendations and instructions for best results.
5. For fixing the setiles using sand and cement, follow the instruction given below:
 - a) Use cement and sand mortar in the ratio of 1: 3. Add some water to create a consistent paste.
DO NOT USE NEAT CEMENT FOR FIXING TILES.
 - b) Once the mixing has been completed, do not add more water and use the mixture within one hour.
 - c) Soak the tiles in clean water at least 30 minutes before fixing.
 - d) Remove the tiles from the water and allow them to drain to ensure that there is no film of water on the tile surface.
 - e) Apply a 15-20mm layer of bedding material evenly over an area of 1 square meter at a time on the surface of the area. Apply a fine slurry to the back of the tile to ensure proper and full bedding. Press gently for even adherence at the back of the tile. **DO NOT USE AN IRON HAMMER OR SOME HEAVY MATERIAL TO PRESS THE TILE.**
6. Mark and lay out the tiles from the center of the area to be laid so that cut tiles, if any, will be on the outer edges towards walls.
7. The nominal/work size of the tile is as printed on the carton. It is advisable to maintain a gap of 1mm to 2mm between two tiles to allow for possible expansion as per ISO tolerance norms.
8. Wait for 24 hours after fixing the tiles. After this period, fill the joints with cementitious or epoxy grouts from ARDEX ENDURA (INDIA) PVT. LTD.
9. Fifteen minutes after the grouting process, wipe off the excess grout with a damp sponge and polish the tiles with a soft, dry cloth.
10. Please note that wall tiles are specially manufactured for use on the wall only. **DO NOT FIX WALL TILES ON THE FLOOR.**
11. For cleaning tiles, use a moist cloth or sponge with water or diluted soap solution. You can also use tile & stone cleaners from ARDEX ENDURA (INDIA) PVT. LTD. **DO NOT SCRUB OR SCRATCH.**
12. DO NOT USE ACID / ALKALI / SOLVENT / OILS / CLEANING POWDERS ETC. FOR CLEANING TILES.
13. Please note: The company does not accept any liability in case of problems arising out of non-adherence to these tile fixing instructions.
14. **THE COMPANY WILL BEAR NO RESPONSIBILITY AFTER THE TILES ARE FIXED.**



NOTHING IN THESE INSTRUCTION IS A SUBSTITUTE FOR GOOD WORKMANSHIP AND SUPERVISION

TECHNICAL SPECIFICATIONS

S. No.	Property	International Standard ISO 13006 / EN 14411 Group BIIa Requirement	Indian Standard IS 15622:2017 Group BIIa Requirement	Johnson Ceramic Floor Rectified	Test Method
i) Dimensions & Surface Quality Rectified edge					
1	Deviation in Length & Width	± 0.3% or ± 1.0mm	± 0.1%	± 0.1%	ISO 10545-2 / IS 13630-1
2	Deviation in Thickness	± 5% or ± 0.5mm	± 5%	± 4%	ISO 10545-2 / IS 13630-1
3	Straightness of Sides	± 0.3% or ± 1.5mm	± 0.1%	± 0.1%	ISO 10545-2 / IS 13630-1
4	Rectangularity	± 0.3% or ± 2.0mm	± 0.1%	± 0.1%	ISO 10545-2 / IS 13630-1
5	Surface Flatness (Center Curvature, Edge Curvature & Warpage)	± 0.4% or ± 1.8mm	± 0.5%	± 0.3%	ISO 10545-2 / IS 13630-1
6	Surface Quality	Min 95% free from visible defects	Min 95% free from visible defects	>95% free from visible defects	ISO 10545-2 / IS 13630-1
ii) Physical Property					
7	Water Absorption	3<E≤ 6%, Individual Max 6.5%	Average 3<E≤ 6%, Individual Max 6.2	3<E≤ 6%	ISO 10545-3/ IS 13630- 2
8	Modulus of Rupture	Average 22 N/mm ² , Individual 20 N/mm ² , Min	Average 22 N/mm ² , Individual 20 N/mm ² , Min	≥ 25 N/mm ²	ISO 10545-4/ IS 13630-6
9	Breaking Strength	≥ 600 N for thickness < 7.5 mm, ≥ 1000N for thickness ≥7.5mm	≥ 600 N for thickness < 7.5 mm, ≥ 1000N for thickness ≥7.5mm	≥ 600 N for thickness < 7.5 mm and ≥ 1000N for thickness ≥7.5mm	ISO 10545-4 / IS 13630-6
10	Moisture expansion	Report value	0.03 mm/m, Max	0.03 mm/m, Max	ISO 10545-10 / IS 13630-3
11	Scratch hardness of surface (Moh's scale)	Not Required	4, Min	≥ 4	IS 13630 -13
12	Resistance to Surface Abrasion of Glazed Tiles for Floor Application	Report abrasion class	class II, Min	class II-V	ISO 10545-7 / IS 13630 -11
13	Coefficient of Linear Thermal Expansion	Report value	Max, 9 x 10 ⁻⁶ K ⁻¹	≤ 9 x 10 ⁻⁶ K ⁻¹	ISO 10545-8 / IS 13630- 4
14	Thermal Shock Resistance	Report result	10 cycles Min	No Damage	ISO 10545-9 / IS 13630 -5
15	Crazing Resistance of Glazed Tiles	Report result	4 cycles @7.5 bar Min	No Damage	ISO 10545-11/ IS 13630-9
16	Impact Resistance	Report value	0.55 Min	≥ 0.55	ISO 10545-5/ IS 13630 -14
17	Slip Resistance for Floor Application	Report value	Manufacturer to declare	0.4 to 0.5	ANSI B101.3
18	Frost Resistance	Report result	Required if requested by purchaser	No Damage	ISO 10545-12 / IS 13630-10
19	Chemical Property (Cleansers except to cleansing agents containing Hydrofluoric acids and its compounds)				
a	Resistance to Staining - Glazed Tiles	Min Class 3	Class 1, Min	Class 3, (ISO) / Class 1 (BIS)	ISO 10545-14 / IS 13630-8
b	Resistance to Household Chemicals and Swimming Pool water cleansers	Min B	Class AA Min	B/AA	ISO 10545-14 / IS 13630-8
c	Resistance to acids and alkalis (Glazed Tiles)	report resistance class	report resistance class	GA	ISO 10545-13/ IS 13630-8
20	Color Resistance to UV light	Report result	-	No change in color	DIN 51094

* ISO / IS technical specifications for Johnson tiles are applicable only for premium /1st Quality tile

Please inspect all tiles prior to installation, company will not entertaining complaints once tiles are laid/ fixed

PACKING DETAILS

Product	Nominal Size (cm)	No of Tiles/Box	Approx Area/Box (sq m)	Approx Weight/Box (kgs)	Approx Cartons/ 20' Container	Approx Area per Container (sq m)
20.3x100.7 Floor Matt	20.3x100.7	5	1.00	20.3	1330	1330
Johnson 60x60 Floor (Matt)	60x60	4	1.44	26.5	1018	1466
Johnson 40x40 Floor (Matt)	40x40	5	0.8	20.00	1350	1080
Johnson 30x30 Floor	30x30	10	0.9	12.50	2160	1944

TECHNICAL SPECIFICATIONS

S. No.	Property	International Standard ISO 13006 / EN 14411 Group BIIa Requirement	Indian Standard IS 15622:2017 Group BIIa Requirement	Johnson Floor (Unrectified) Value	Test Method
i) Dimensions & Surface Quality		Unrectified edge			
1	Deviation in Length & Width	± 0.6% or ± 2.0mm	± 0.4 %	± 0.4 %	ISO 10545-2 / IS 13630-1
2	Deviation in Thickness	± 5% or ± 0.5mm	± 5 %	± 4 %	ISO 10545-2 / IS 13630-1
3	Straightness of Sides	± 0.5% or ± 1.5mm	± 0.3 %	± 0.2 %	ISO 10545-2 / IS 13630-1
4	Rectangularity	± 0.5% or ± 2.0mm	± 0.3 %	± 0.3 %	ISO 10545-2 / IS 13630-1
5	Surface Flatness (Center Curvature, Edge Curvature & Warpage)	± 0.5% or + 2.0mm	± 0.5 %	± 0.3 %	ISO 10545-2 / IS 13630-1
6	Surface Quality	Min 95% free from visible defects	Min 95% free from visible defects	> 95% free from visible defects	ISO 10545-2 / IS 13630-1
ii) Physical Property					
7	Water Absorption	3<E≤ 6%, Individual Max 6.5%	Average 3 < E ≤ 6%, Individual Max 6.2	3 < E ≤ 6%	ISO 10545-3/ IS 13630- 2
8	Modulus of Rupture	Average 22 N/mm ² , Individual 20 N/mm ² , Min	Average 22 N/mm ² , Individual 20 N/mm ² , Min	≥ 25 N/mm ²	ISO 10545-4/ IS 13630-6
9	Breaking Strength	≥ 600 N for thickness < 7.5 mm, ≥ 1000N for thickness ≥7.5mm	≥600 N for thickness <7.5 mm, ≥1000N for thickness ≥7.5mm	≥600 N for thickness <7.5 mm, ≥1000N for thickness ≥7.5mm	ISO 10545-4 / IS 13630-6
10	Moisture expansion	Report value	0.3 mm/m, Max	0.3 mm/m, Max	ISO 10545-10 / IS 13630-3
11	Scratch hardness of surface (Moh's scale)	Not Required	4, Min	>4	IS 13630 -13
12	Resistance to Surface Abrasion of Glazed Tiles for Floor Application	Report abrasion class	class II, Min	class II, V	ISO 10545-7 /IS 13630 -11
13	Coefficient of Linear Thermal Expansion	Report value	Max, 9 x 10 ⁻⁶ K ⁻¹	≤ 9 x 10 ⁻⁶ K ⁻¹	ISO 10545-8/ IS 13630-4
14	Thermal Shock Resistance	Report result	10 cycles Min	No Damage	ISO 10545-9 / IS 13630 -5
15	Crazing Resistance of Glazed Tiles	Report result	4 cycles @7.5 bar Min	No Damage	ISO 10545-11/ IS 13630-9
16	Impact Resistance	Report result	0.55, Min	≥ 0.55	ISO 10545-5/ IS 13630-14
17	Slip Resistance for Floor Application	Report result	Manufacturer to declare	0.4 to 0.5	ANSI B101.3
18	Frost Resistance	Report result	Required if requested by purchaser	No Damage	ISO 10545-12/ IS 13630-10
19	Chemical Property (Cleansers except to cleansing agents containing Hydrofluoric acids and its compounds)				
a	Resistance to Staining - Glazed Tiles	Min Class 3	Class 1, Min	Class 3, (ISO) / Class 1 (BIS)	ISO 10545-14 / IS 13630-8
b	Resistance to Household Chemicals and Swimming Pool water cleansers	Min B	Class AA Min	B/AA	ISO 10545-14 / IS 13630-8
c	Resistance to acids and alkalis (Glazed Tiles)	report resistance class	report resistance class	GA	ISO 10545-13 /IS 13630 -8
20	Color Resistance to UV light	Report result	-	No change in colour	DIN 51094

* ISO / IS technical specifications for Johnson tiles are applicable only for premium /1st Quality tile
Please inspect all tiles prior to installation, company will not entertaining complaints once tiles are laid/ fixed

TECHNICAL SPECIFICATIONS

S. No	Property	International Standard ISO 13006 / EN 14411 Group Bla Requirement	Indian Standard IS 15622:2017 Group Bla Requirement	Johnson Tiles Value (Matt)	Johnson Tiles Value (Polished)	Test Method
i) Dimensions & Surface Quality		whichever is less applicable. Rectified edge	Rectified edge			
1	Deviation in Length & Width	± 0.3% or ±1.0mm	± 0.1 %	± 0.1%	± 0.1%	ISO 10545-2 / IS 13630-1
2	Deviation in Thickness	± 5% or ± 0.5mm	± 5 %	± 4%	± 4%	ISO 10545-2 / IS 13630-1
3	Straightness of Sides	± 0.3% or ±0.8mm	± 0.1 %	± 0.1%	± 0.1%	ISO 10545-2 / IS 13630-1
4	Rectangularity	± 0.3% or ± 1.5mm	± 0.1 %	± 0.1%	± 0.1%	ISO 10545-2 / IS 13630-1
5	Surface Flatness	± 0.4% or ±1.8mm	± 0.5 %	± 0.2%	± 0.2%	ISO 10545-2 / IS 13630-1
6	Surface Quality	Min 95% free from visible defects	Min 95% free from visible defects	>95% free from visible defects	>95% free from visible defects	ISO 10545-2 / IS 13630-1
ii) Physical Property						
7	Water Absorption	≤ 0.5% individual Max 0.6%.	Average ≤0.08%, Individual 0.1%, Max	≤ 0.05%	≤ 0.05%	ISO 10545-3/ IS 13630-2
8	Modulus of Rupture	≥ 35 N/mm ² Individual 32N/mm ² , Min	Average 35 N/mm ² Individual 32N/mm ² , Min	≥ 38 N/mm ²	≥ 38 N/mm ²	ISO 10545-4/ IS 13630-6
9	Breaking Strength	700 N Min for thickness < 7.5 mm, 1300 Min for thickness ≥ 7.5 mm	700 N Min for thickness <7.5 mm, 1300 Min for thickness ≥7.5 mm	≥1500 N	≥1500 N	ISO 10545-4 / IS 13630-6
10	Moisture expansion	Report value	0.02 mm/m, Max	≤ 0.02 mm/m	≤ 0.02 mm/m	ISO 10545-10 / IS 13630-3
11	Scratch hardness of surface (Moh's scale)	Not Required	5, Min	≥ 6 (Matt surface)	≥ 5 (Polished surface)	IS 13630 -13
12	Resistance to Surface Abrasion of Glazed Tiles for Floor Application	report abrasion class & Cycle passed	Class II , Min	PEI III-V	PEI II- III	ISO 10545-7 / IS 13630 -11
13	Coefficient of Linear Thermal Expansion	Report value	Max, 6 x 10 ⁻⁶ K ⁻¹	≤ 6 x 10 ⁻⁶ K ⁻¹	≤ 6 x 10 ⁻⁶ K ⁻¹	ISO 10545-8/ IS 13630-4
14	Thermal Shock Resistance	Report result	10 cycles Min	No Damage	No damage	ISO 10545-9 / IS 13630 -5
15	Crazing Resistance of Glazed Tiles	Report result	4 cycles @7.5 bar Min	No Damage	No Damage	ISO 10545-11/ IS 13630-9
16	Impact Resistance	Report value	0.55, Min	≥ 0.55	≥ 0.55	ISO 10545-5 / IS 13630-14
17	Slip Resistance for Floor Application	Report value	Manufacturer to declare	≥ 0.45	≥ 0.4	ANSI B101.3
18	Frost Resistance	Report result	Required if requested by purchaser	No damage	No Damage	ISO 10545-12 / IS 13630-10
19	Bulk Density (g/cc)	Report value	2.2, Min	≥ 2.2	≥ 2.2	ASTM C373-16 / IS 13630-2
20	Color Resistance to UV light	Report result	-	No change in color	No change in color	DIN 51094
21	Chemical Property (cleansers except to cleansing agents containing Hydrofloric acids and its compounds)					
a	Resistance to Staining - Glazed Tiles	Min Class 3	Class I, Min	Class 3 (ISO) / Class 1(BIS)	Class 3 (ISO) / Class 1(BIS)	ISO 10545-14 / IS 13630-8
b	Resistance to Household Chemicals and Swimming Pool water cleansers - Glazed tiles	GB	AA Min	GA/AA	GA/AA	ISO 10545-13 / IS 13630-8
c	Resistance to acids and alkalis (glazed Tiles)	Report resistance class	Report resistance class	GA	GA	ISO 10545-13 / IS 13630 -8
22	Lead & Cadmium Release- for Glazed Tiles, where required	Report value	-	Nil	Nil	ISO 10545-15

* ISO / IS technical specifications for Johnson tiles are applicable only for premium /1st Quality tile

Please inspect all tiles prior to installation, company will not entertain any complaints once tiles are laid / fixed

YOU CAN ALSO REACH US AT

Region	Branch	Tel.:
East	Kolkata	033-46021880
	Bhubaneshwar	0674 6539836/37/2430240
	Siliguri	9836065812
	Guwahati	8135846661/7575900492
	Ranchi	9576038118
West	Mumbai	022-40647500
	Thane	022-25867600 / 666
	Pune	020-41301164 / 31
	Aurangabad	8669600748
	Ahmedabad	079-48480010
	Raipur	0771-4919129
	Indore	0731-4007441
North	Jalandhar	0182-4505038 / 39
	Chandigarh	0172-4697100
	Delhi	011-49526600

Region	Branch	Tel.:
North	Jaipur	0141-2368329
	Lucknow	0522-2721699
	Varanasi	0542-2222620
	Patna	9576038781
South	Bengalure	080-22234310/080-22234330
	Hyderabad	040-29802270 / 71 / 72
	Vijayawada	9666429666
	Vishakhapatnam	0891-2796376
	Tirupati	9121228960
	Kochi	0484-4871277
	Kozhikode	0422-4382698
	Thiruvananthapuram	0471-2720141
	Chennai	044-28544116 / 28541881
	Coimbatore	0422-4382698
	Madurai	0452-4355584 / 4355594
	Trichy	9486718544

EXPERIENCE CENTERS

Location	Address	Tel.:
Kolkatta	HOUSE OF JOHNSON - 83 JBS Haldane Avenue, TOPSIA Trinity towers Kolkata - 700046	033-46021880
Guwahati	HOUSE OF JOHNSON - 1st Floor, Above Royal Riders Honda, Near Rahul Kata, Pub Bragaon, Garchuk, Guwahati - 781035	7575900492
Bhubaneshwar	HOUSE OF JOHNSON - Ray Tower, 1st Floor, N4/237, Indradhanu market, IRC Village, Nayapalli, Bhubaneshwar, Orissa - 751015	0674 6539836/37/2430240
Patna	HOUSE OF JOHNSON - SK Builders and colonizer Pvt.Ltd.,1st Floor, SK Palace, Saguna more, Bihar - 801503.	9702651243
Chandigarh	HOUSE OF JOHNSON - SCO 214, sector14, Panchkula, Haryana - 134109	0172-4637724
Delhi	HOUSE OF JOHNSON - First & Mezzanine Floor, B-1/G-3, Mohan Industrial Estate, Mathura Road, New Delhi - 110094.	11-49526600
Lucknow	HOUSE OF JOHNSON - 1st Floor, Prithvi Ratan Height,Plot No CP-4, Vijayant khand - 3, Gomtinagar Yojna, Lucknow - 226028	0522-2721699
Varanasi	HOUSE OF JOHNSON - Ashakunj, 1st floor, D59/103 D4, Opp Siddharth Complex, Sigra Mehmoorganj Road, Varanasi - 221010	0542-2222620
Aurangabad	House Of Johnson Aurangabad - Gut No 16/44, NH-211, Near Balapur Phata, Near Ramkisan Lawns, Beed Bypass Road Aurangabad 431005	8669600748
Pune	HOUSE OF JOHNSON - Sable House, Poona Snuff Factory, Sr. No 11A, Plot 408/4/5, Satara Road, Gultekadi, Pune - 411037	7350009364
Thane	HOUSE OF JOHNSON - Shop No.5, Gr.Floor, Cosmos Jewels, Near Dmart, Anand Nagar, Ghodbunder Road, Thane West - 400615	8424003247
Mumbai - Andheri	HOUSE OF JOHNSON - 1st flr, Bonanza, Sahar Plaza, Nr Hotel Kohinoor continental, J B Nagar, Andheri Kurla Road, Andheri East, Mumbai - 400059	8108030975
Ahmedabad	HOUSE OF JOHNSON - F 106-107, Shivalik Plaza, IIM Road, Panjrapole Cross Road, Ahmedabad, Gujarat - 380015	079-48480010
Indore	HOUSE OF JOHNSON - Shop No 5, 6, 7 and 8, Upper Ground Floor, Exotica, Shalimar Township, Village Niranjapur, A. B. Road, Indore, Madhya Pradesh - 452001	0731-4007441
Raipur	HOUSE OF JOHNSON - 2nd Floor, MM Silver Plaza, Opp Udyog Bhawan, Ring Road - 1, Raipur, Chattisgarh - 492001	771-4919129
Coimbatore	HOUSE OF JOHNSON - Elysium Towers, Park Gate Rd, No. 21, ATT Colony, Gopalapuram, Coimbatore - 641018	0422-4382698
Chennai	HOUSE OF JOHNSON - 82, 84 & 86 Bascon Maeru, 1st floor, Kodambakkam High Road, Nungambakkam, Chennai - 600034	044-48611632
Kochi	HOUSE OF JOHNSON - Door no. 11/300 f, Next to VTJ Hyundai, NH 47 Kundanoor, Maradu, Kochi, Ernakulam - 682304	0484-4871277
Kozhikode	HOUSE OF JOHNSON - Tilal Tower, Near Nexa Showroom, Kudilthod, Malaparamba bypass, Kozikode, Kerala - 673017	0495-2357505
Thiruvananthapuram	HOUSE OF JOHNSON -1st Floor, Sreedhanya Apex, TC 22/3720 (4) Vellayambalam, Sasthamangalam PO, Thiruvananthapuram, Kerala - 695010	0471-2720141
Bengalure	HOUSE OF JOHNSON - No.39, Rajaram Mohan Roy Road , Opp. Kanteerava indoor Stadium, Bengalure - 560027	080-22234310/080-22234330
Bengalure	HOUSE OF JOHNSON - Dodda Banaswadi, Opp. New Baldwin Residential School, Bengalure-560043	080-41692976 / 41692060
Hyderabad	HOUSE OF JOHNSON - SP Jubilee Crown (3rd Floor) Plot - 1270, Road No.36, Jubilee Hills, Hyderabad - 500033	8897525143

For address and contact numbers of our Johnson Exclusive Showrooms and Authorized Retailers, please visit our website www.hrjindia.com

NOTES _____



Toll Free No.: 1800-210-7484

WhatsApp No.: +91 84510 57484

Email: tiles.customercare@prismjohnson.in

For Export Enquires, Email:

exports.customercare@prismjohnson.in

PRISM JOHNSON LIMITED

H & R JOHNSON (INDIA) DIVISION

Corporate Office:

7th Floor, Windsor, C. S. T. Road, Kalina,
Santacruz (East), Mumbai - 400 098, India.

Tel: +91-22-40647300

Website: www.hrjohnsonindia.com

Registered Office: 305, Laxmi Niwas Apartments, Ameerpet
Hyderabad - 500016, Telangana, India.

Download App



Download E-Catalogue



HRJIndia



@hrjohnsonofficial



Hrjohnsonindia



hrjohnson_india



h-&-r-johnson-india-prism-johnson-limited



HRJohnsonIndia1