

GRAND
LEGACY OF
65
YEARS

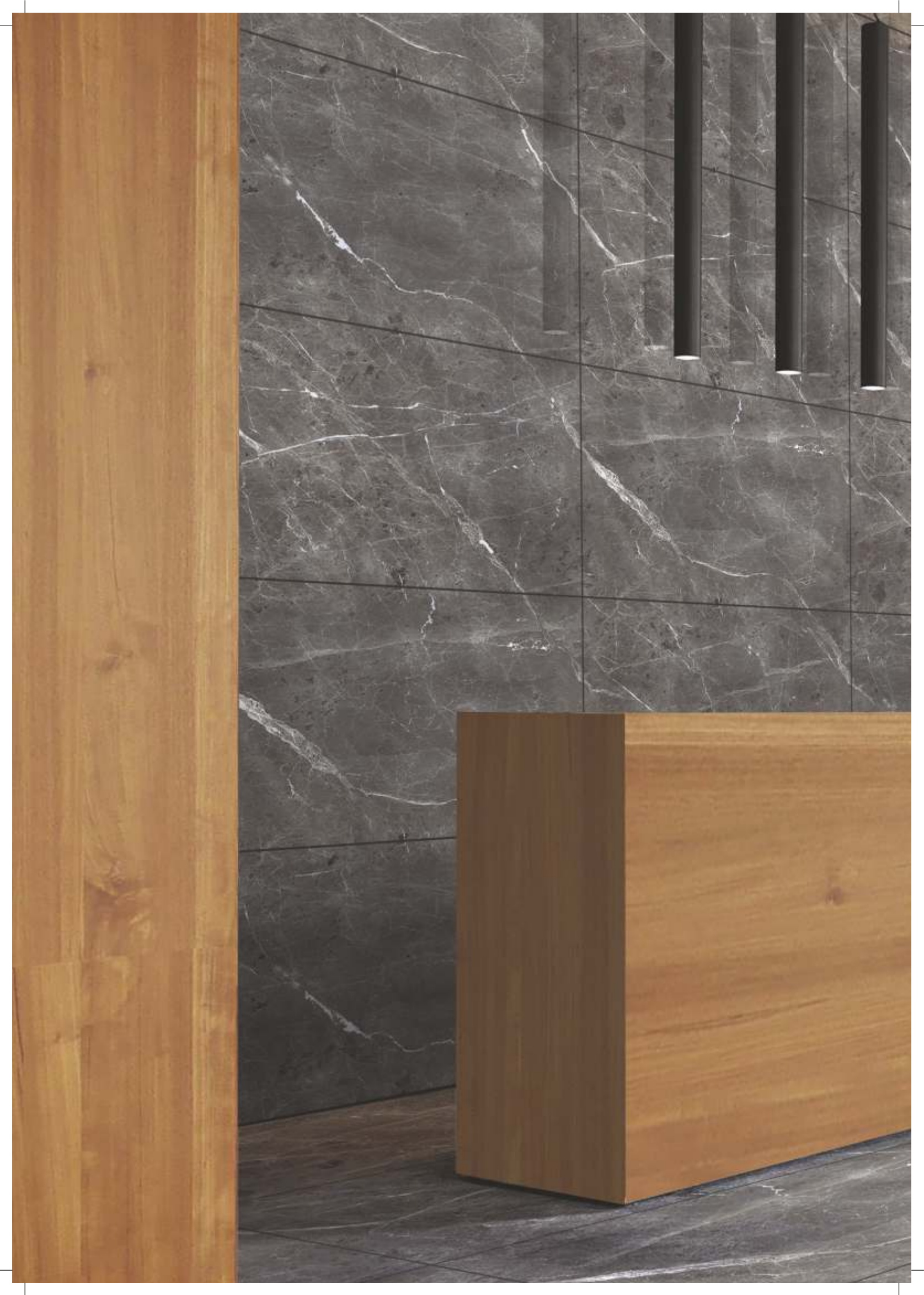
 **JOHNSON[®]TILES**
NOT JUST TILES, LIFESTYLES.[®]

ELITE PLUS
COLLECTION

60x120 CM

RJKT - Aug-2023

JOHNSON



JOHNSON VITRIFIED TILES COLLECTION

60X120 cm Vitrified Tiles

Johnson Vitrified Tiles Collection offers the most comprehensive range of quality tiles suitable for a wide range of interior styles and applications. Available in a size of 60 x 120 cm Johnson Vitrified Tile collection exhibits variety of colours, looks and finishes such as polished, matt, satin, wood and newly introduced glamour, exotic, radiant, carving and special carving.

Ever evolving and ever inspiring, the collection will leave you spoilt for choice. Johnson Vitrified Tiles will lend unparalleled aesthetic appeal to your interior spaces.

PLANEX

60X120

GLAMOUR	06
EXOTIC	10
SPL CARWING	18
CARWING	20
RADIANT	28
POLISHED	36
SATIN	68
MATT	70
Technical & Packing Details	84
Branch & EC Details	85

CIMMERIAN BLUE



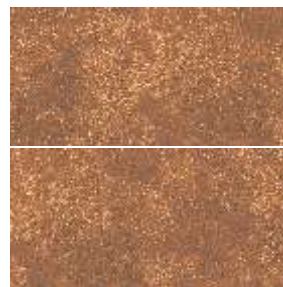
RANDOM PHASES

CIMMERIAN CHOCO



RANDOM PHASES

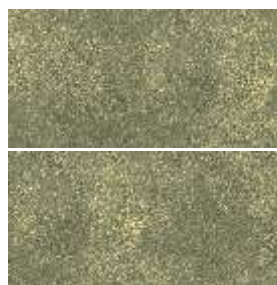
CIMMERIAN COTTO



RANDOM PHASES



CIMMERIAN GREEN



RANDOM PHASES

GLASSCO BLISS



RANDOM PHASES

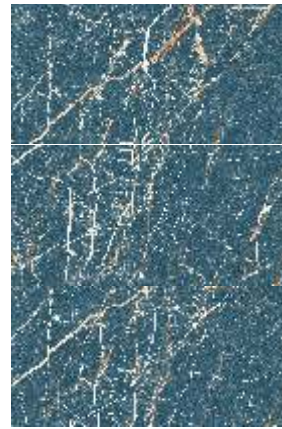
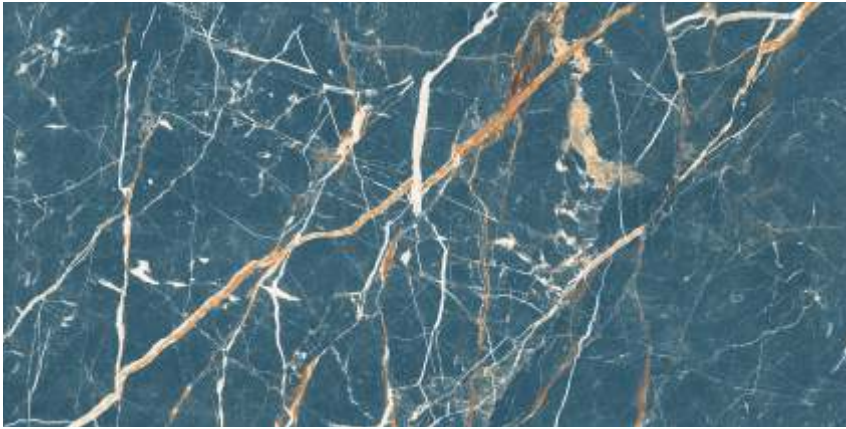
SCHUMM BLUE



RANDOM PHASES

SILVERA BLUE

NEW



RANDOM PHASES

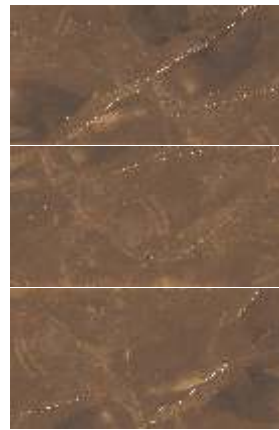
VIVIEN RED

NEW



RANDOM PHASES

AMONITE BROWN



RANDOM PHASES

ANANT BRECIA



RANDOM PHASES

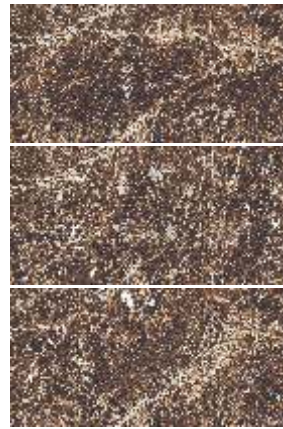
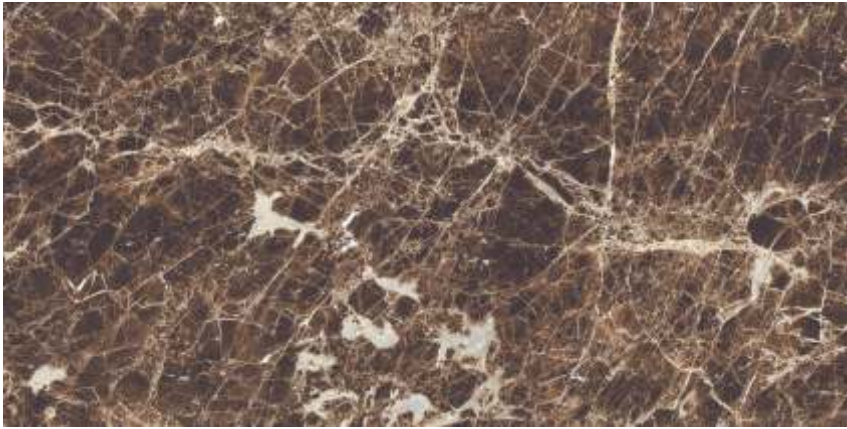
ANANT BRUNO



RANDOM PHASES



ANANT EMPRO



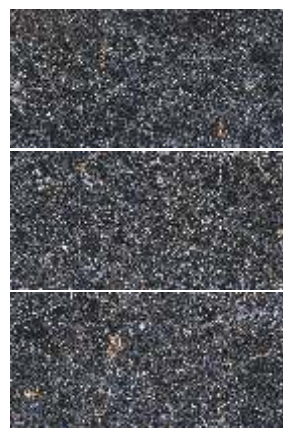
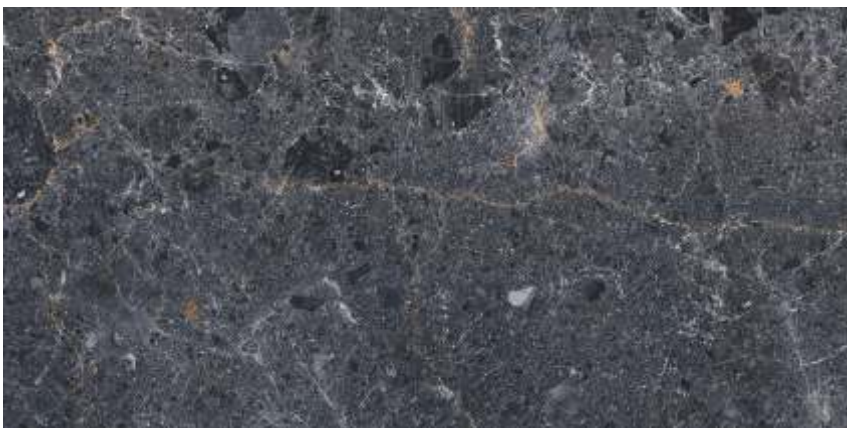
RANDOM PHASES

ANANT ONYX



RANDOM PHASES

BUDAPEST BLUE



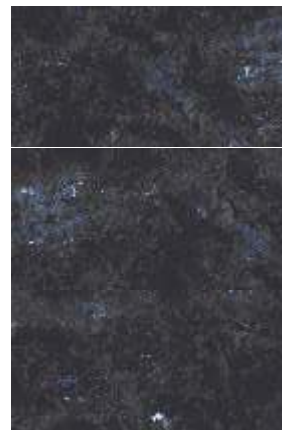
RANDOM PHASES

CANTELL GREY



RANDOM PHASES

CASPIAN BLUE



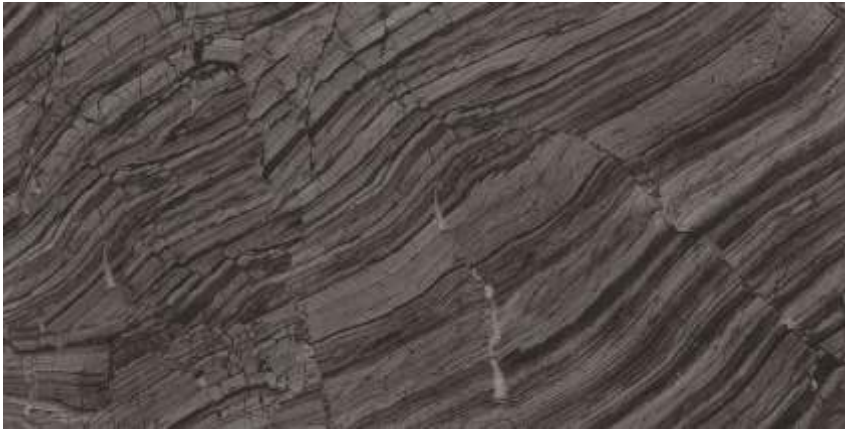
RANDOM PHASES

EMPERADOR BRONZE



RANDOM PHASES

HEINZ GREY



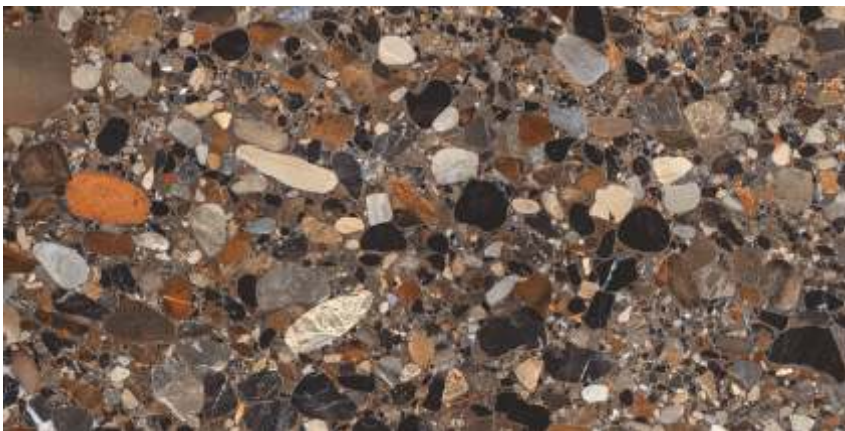
RANDOM PHASES

INNESS LIME



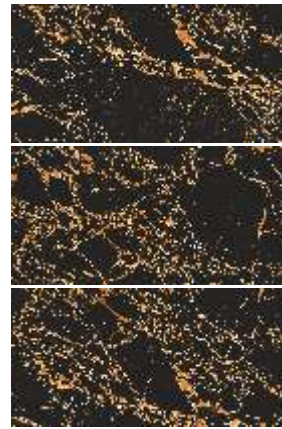
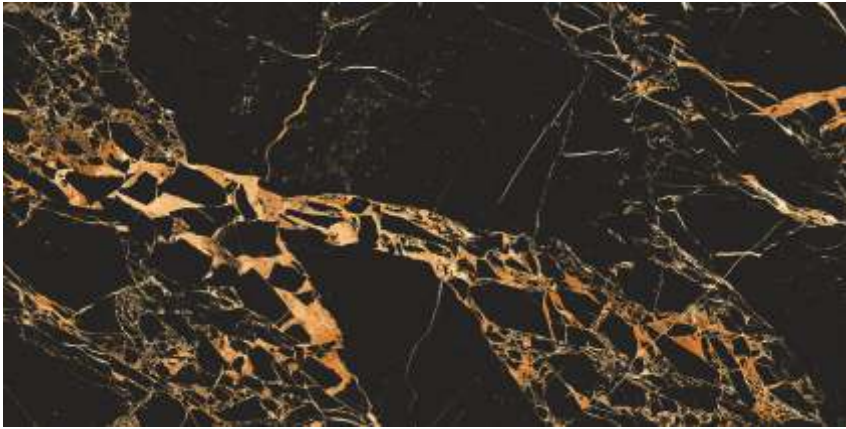
RANDOM PHASES

LANGIN NERO



RANDOM PHASES

LAZEL PORTRO



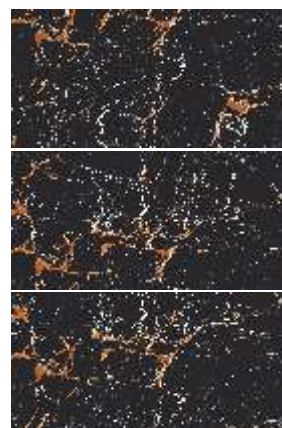
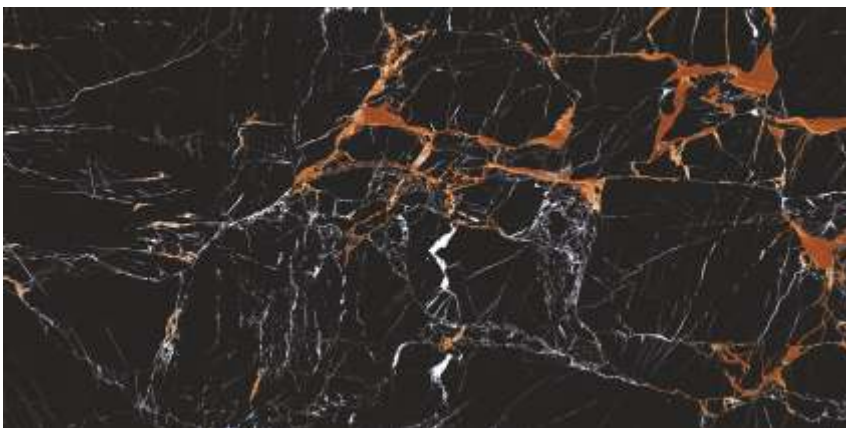
RANDOM PHASES

MANIER FERN



RANDOM PHASES

MAZONITE BLUE



RANDOM PHASES

MINCHIN BLACK



RANDOM PHASES

PERU CHARCOL



RANDOM PHASES

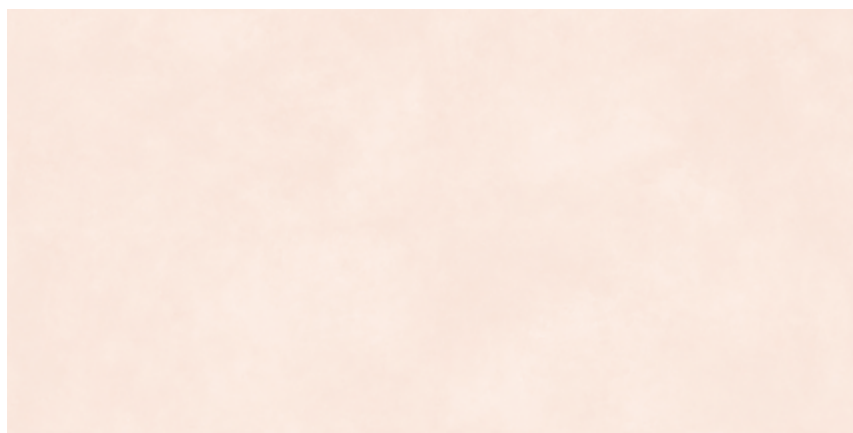
THOM BLUE



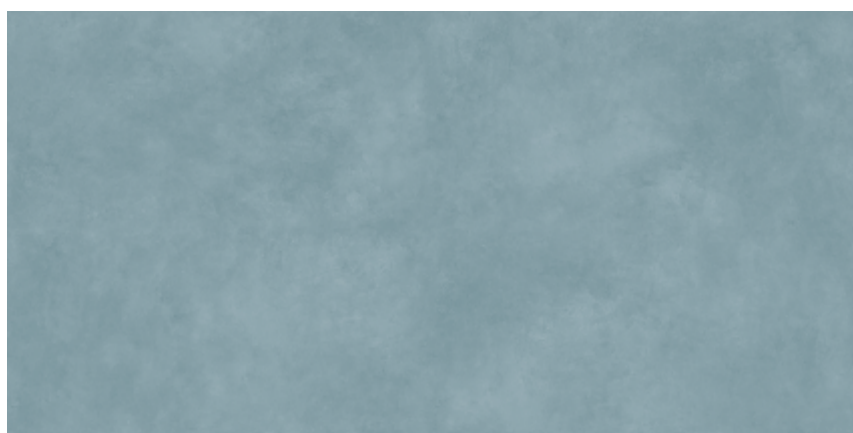
RANDOM PHASES



BONELL BEIGE



BONELL BLUE



BONELL BROWN



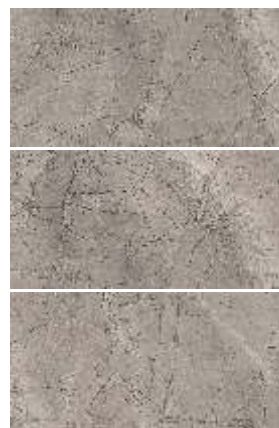


ARIS STATUARIO



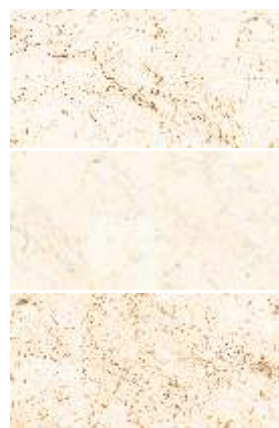
RANDOM PHASES

BENTYL GREY



RANDOM PHASES

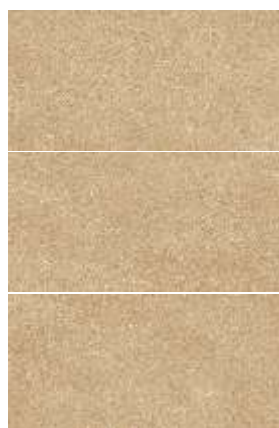
BERGO CREMA



RANDOM PHASES

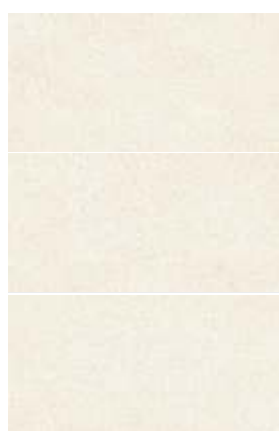
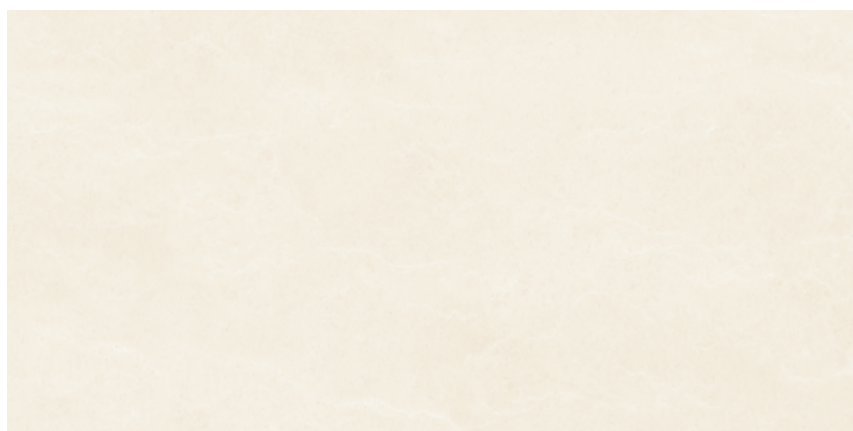


CADWELL BEIGE



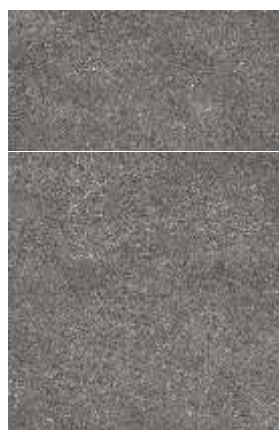
RANDOM PHASES

CADWELL CREAM



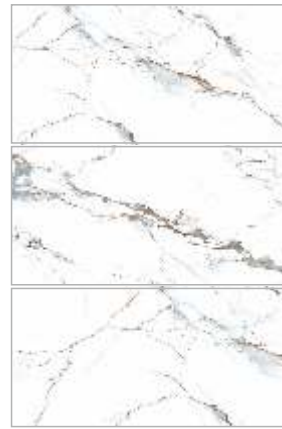
RANDOM PHASES

CADWELL GRIS



RANDOM PHASES

CELIK STATUARIO



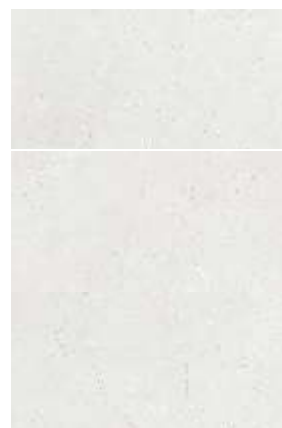
RANDOM PHASES

DABINETT GREY



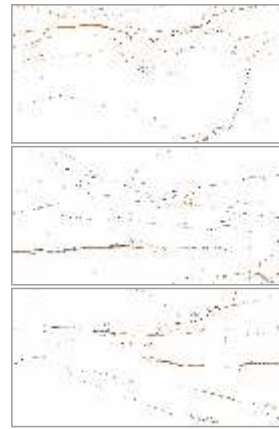
RANDOM PHASES

DABINETT SILVER



RANDOM PHASES

DEMU STATUARIO



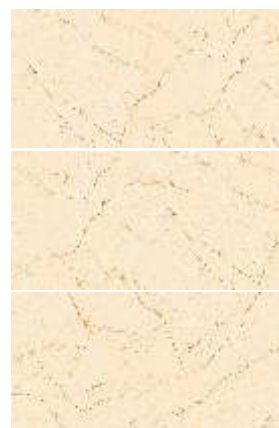
RANDOM PHASES

EBERT BEIGE



RANDOM PHASES

FIANNA BEIGE



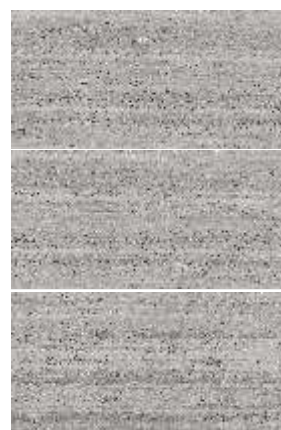
RANDOM PHASES

GARNER CREMA



RANDOM PHASES

GARNER GREY



RANDOM PHASES

GARNER SILVER



RANDOM PHASES

HAINES VERDE



RANDOM PHASES

LEMIN BEIGE



RANDOM PHASES

LEMIN NERO



RANDOM PHASES



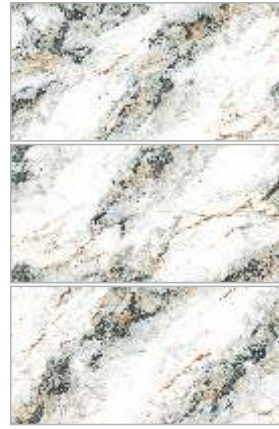
RALTEN AQUA



SHIRE WHITE



ALMY STATUARIO



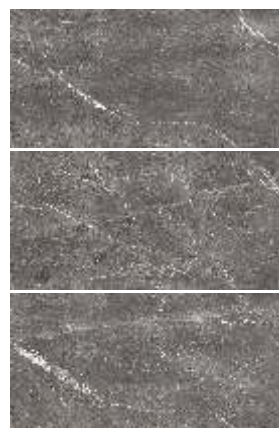
RANDOM PHASES

ANANT ABSTRACT



RANDOM PHASES

ANANT CRAFT



RANDOM PHASES



ANANT CRESTAL



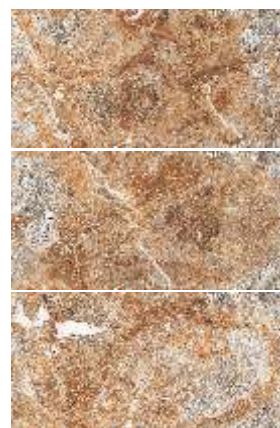
RANDOM PHASES

ANANT GOLDEN



RANDOM PHASES

ANANT ROSSO



RANDOM PHASES

ANANT SATVARIO



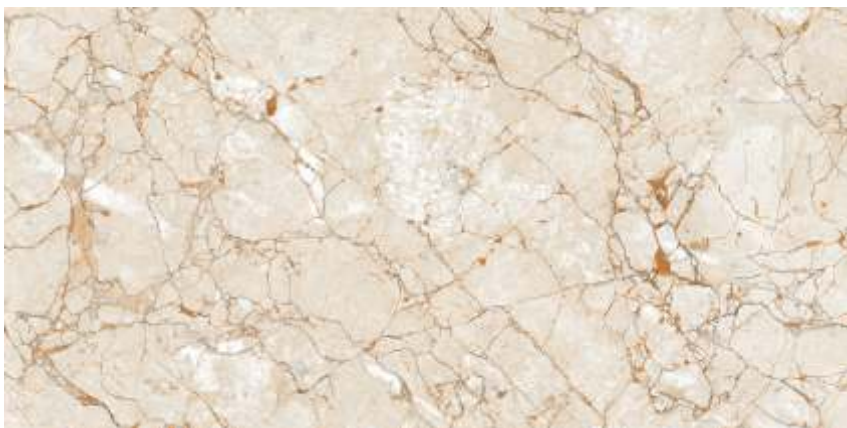
RANDOM PHASES

ANANT TRAVERTINO



RANDOM PHASES

ANANT TURKISH



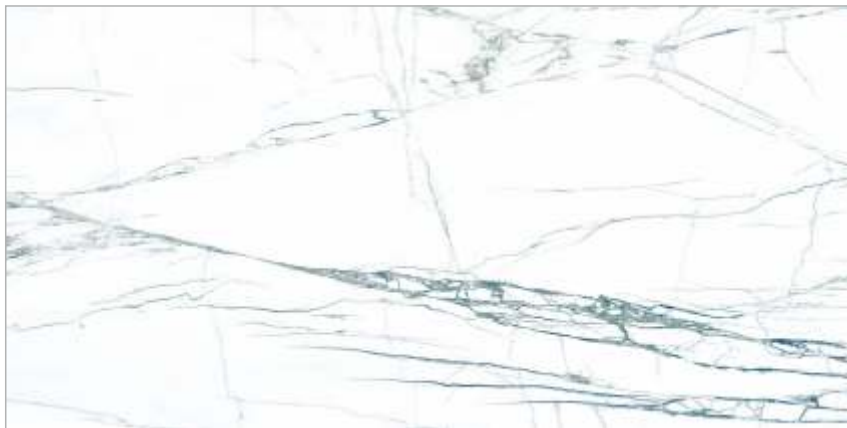
RANDOM PHASES

ANDREE YELLOW



RANDOM PHASES

ARCTIC BLUE



ARCTIC VERDE



BACCUS BERRY



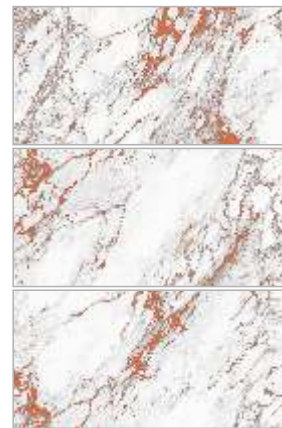
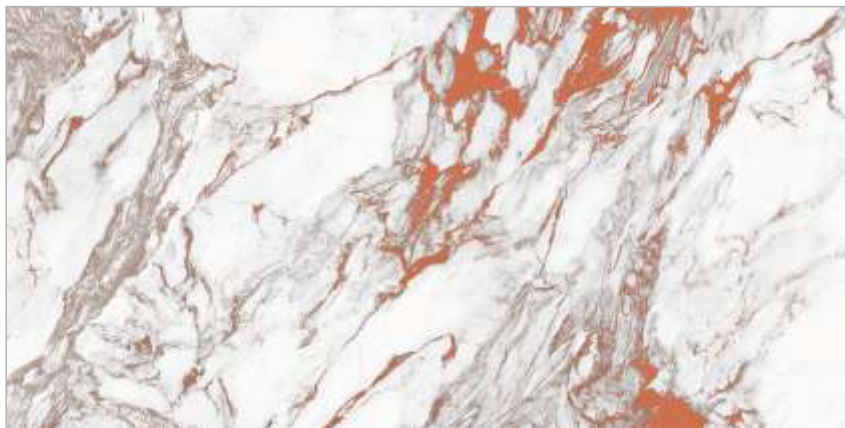
RANDOM PHASES

RENISON BLUE



RANDOM PHASES

VICTOR RED



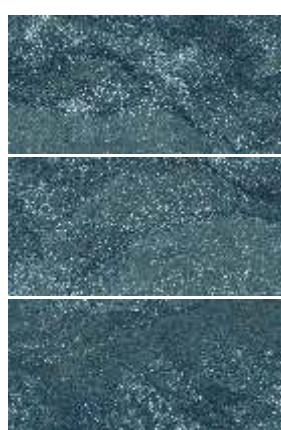
RANDOM PHASES

VICTOR BLUE



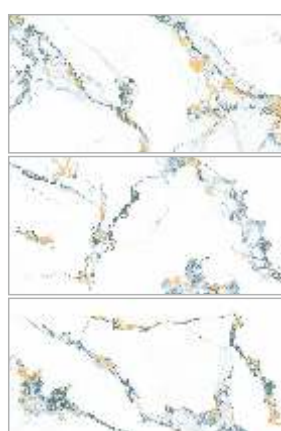
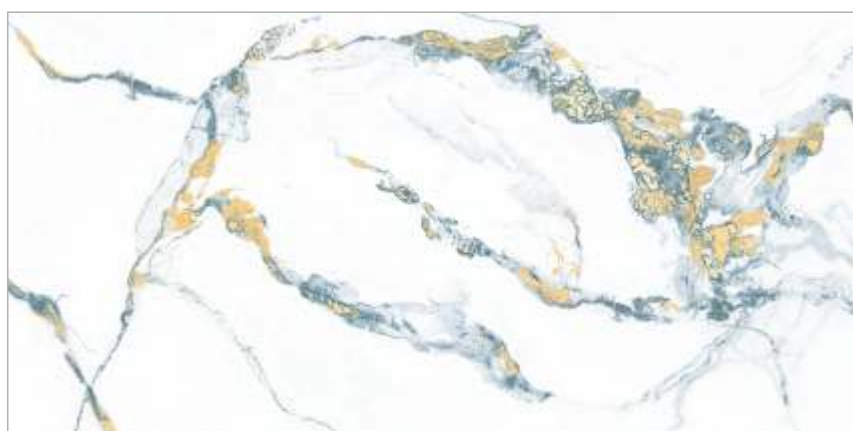
RANDOM PHASES

VOWELL BLUE



RANDOM PHASES

WILKIN AQUA



RANDOM PHASES



ABSON ORANGE



RANDOM PHASES

ADRIAN SILVER



RANDOM PHASES

ALEXNDRITE GREY





AMMOLITE ONYX



RANDOM PHASES

AMORITE GOLD



RANDOM PHASES

ANDOR ICE



RANDOM PHASES

AZURITE BUFF



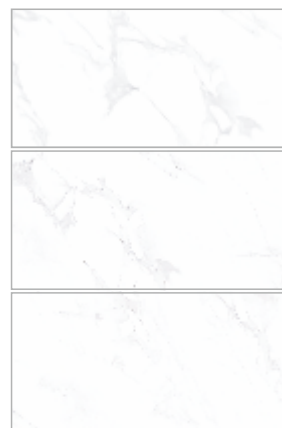
RANDOM PHASES

BOSSET PEARL



RANDOM PHASES

CARRARA SNOW



RANDOM PHASES

CARYL SILVER



RANDOM PHASES

CIMMERIAN BEIGE



RANDOM PHASES

CIMMERIAN GOLD



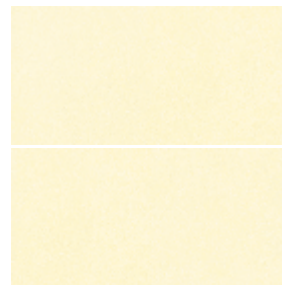
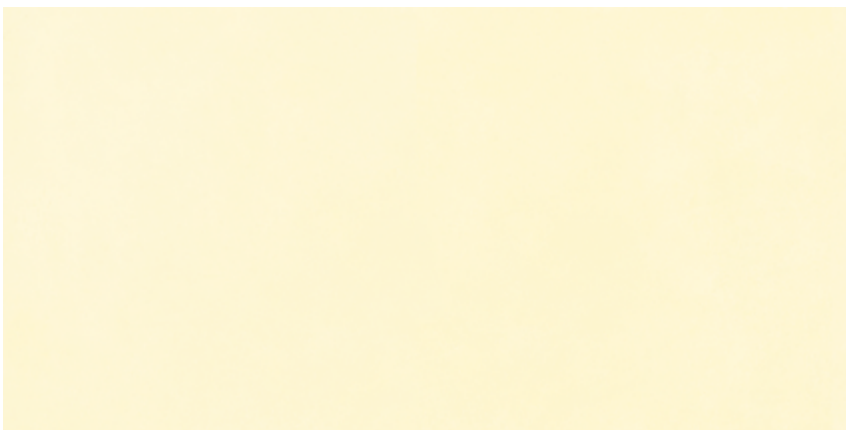
RANDOM PHASES

CIMMERIAN GRIS



RANDOM PHASES

CIMMERIAN IVORY



RANDOM PHASES

CIMMERIAN NERO



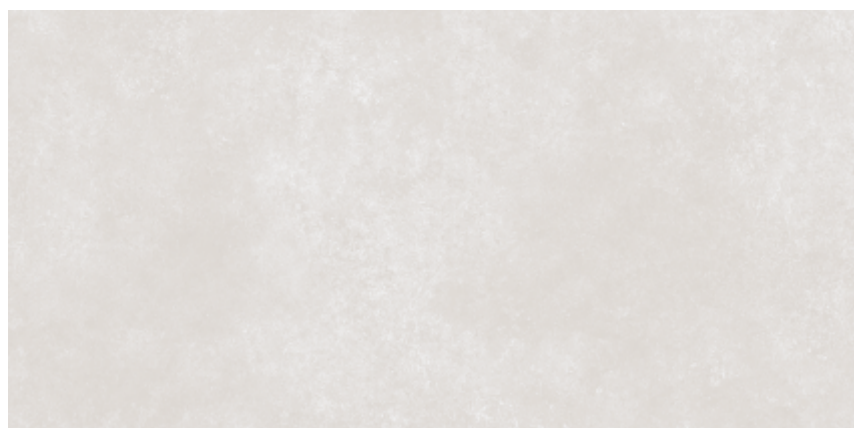
RANDOM PHASES

CIMMERIAN VERDE



RANDOM PHASES

CIMMERIAN WHITE



RANDOM PHASES

CHURCHIL CREMA



RANDOM PHASES

CLATER PINE



RANDOM PHASES

CLEMENT BLUE



RANDOM PHASES

CUESTA GREY



RANDOM PHASES

CUESTA MOCHA



RANDOM PHASES

CULCATA JOY

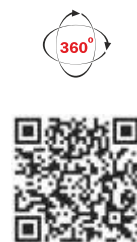


RANDOM PHASES

DAMICO WOOD



RANDOM PHASES

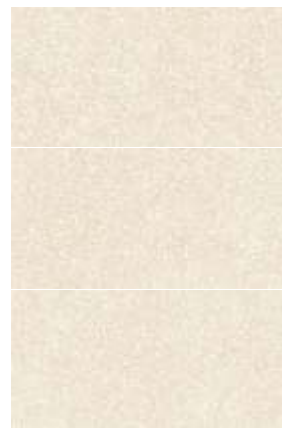


DELEXA NATURA



RANDOM PHASES

DELFT BROWN



RANDOM PHASES

DIANA AMBER



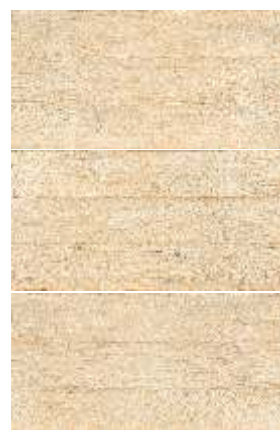
RANDOM PHASES

DIAZO PEARL



RANDOM PHASES

DIXON WOOD



RANDOM PHASES



EFFENY WHITE



RANDOM PHASES



ENNIS GREY



RANDOM PHASES

FANNIN BRUNO



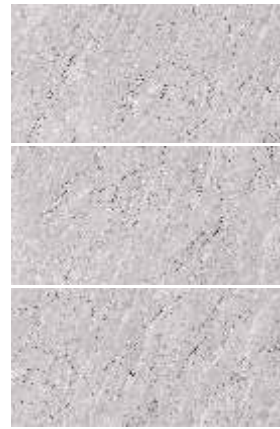
RANDOM PHASES

FEAZE BLUE



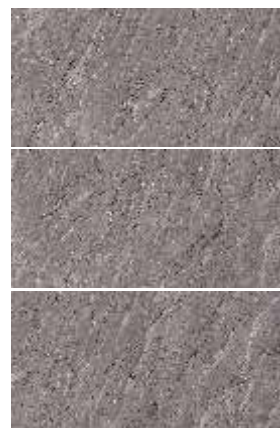
RANDOM PHASES

FLOURITE DOVE



RANDOM PHASES

FLOURITE UMBER



RANDOM PHASES

FLOYD BLUE



RANDOM PHASES

FLUX BRIGE



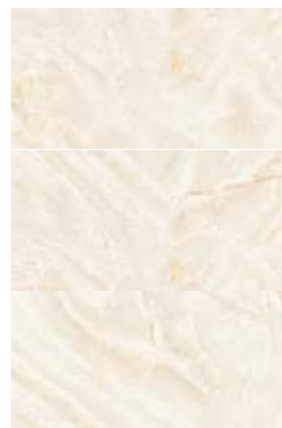
RANDOM PHASES

FLUX GRIS



RANDOM PHASES

GAFFEY BEIGE



RANDOM PHASES

HACKETT BEIGE



HALTON GREY



RANDOM PHASES

HARREX WHITE



RANDOM PHASES

HENRICH BIANCO



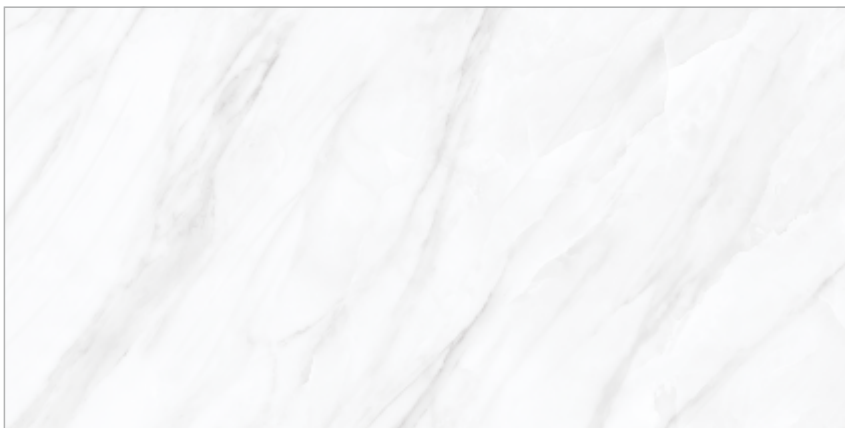
RANDOM PHASES

IGNEOUS BRECCIA



RANDOM PHASES

JACOX WHITE



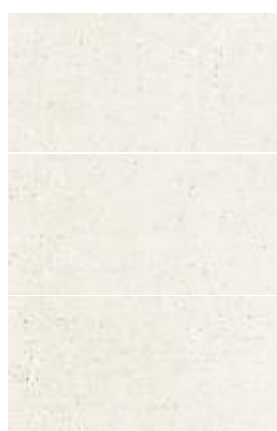
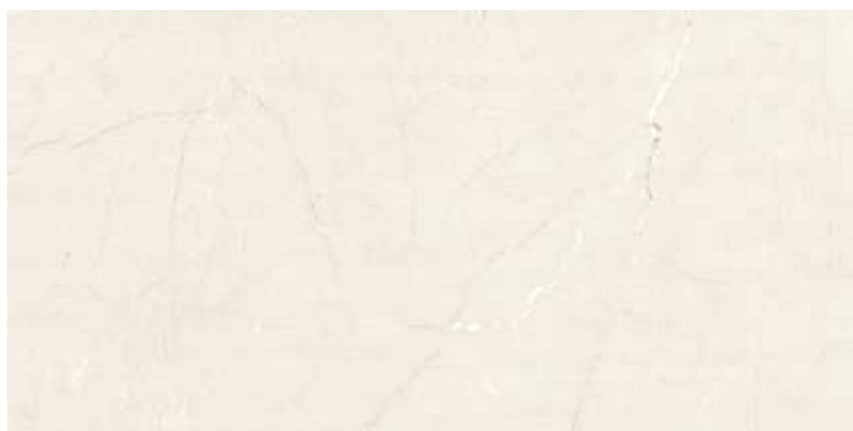
RANDOM PHASES

KAINES BEIGE



RANDOM PHASES

KAINES SILVER



RANDOM PHASES

KELTER VERDE



RANDOM PHASES

KUNZ LIME



RANDOM PHASES

KYNITE WHITE



RANDOM PHASES

LAFFINE WHITE



RANDOM PHASES

LATTIN CREAM



RANDOM PHASES

LYMM WHITE



RANDOM PHASES

MABBITT BEIGE



RANDOM PHASES

MAIRS BEIGE



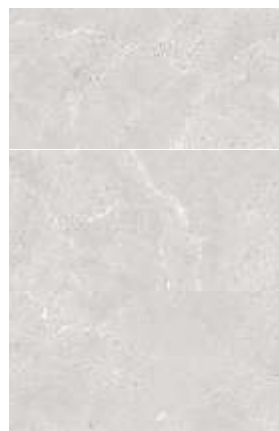
RANDOM PHASES

MALZER GREY



RANDOM PHASES

MALZER SILVER



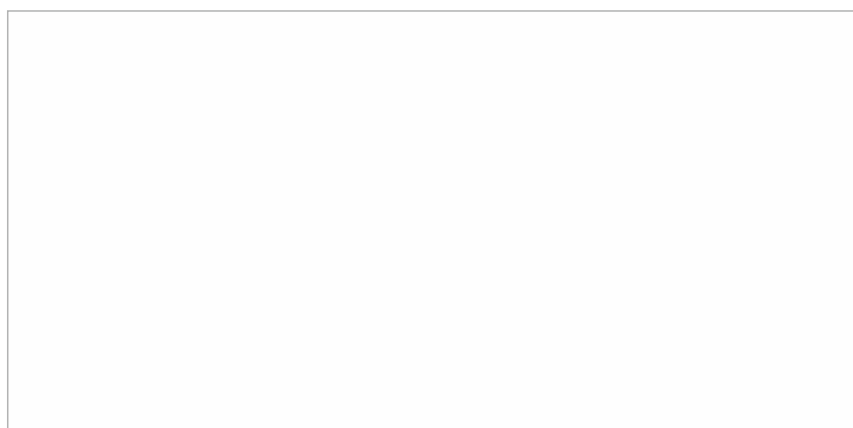
RANDOM PHASES

MEFFLIN WHITE



RANDOM PHASES

MYRON WHITE



NAPEAN SILVER



RANDOM PHASES

NICKEL WHITE



RANDOM PHASES

NOMURA RED



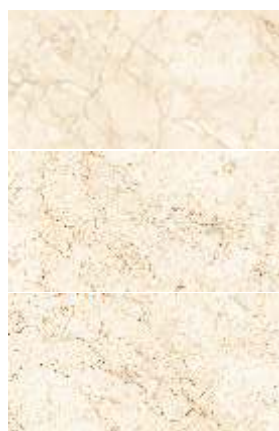
RANDOM PHASES

NOMURA YELLOW



RANDOM PHASES

POMPEI BEIGE



RANDOM PHASES

QUILL STATUARIO



RANDOM PHASES



RANDERS MINT



RANDOM PHASES

REGIS BLUE



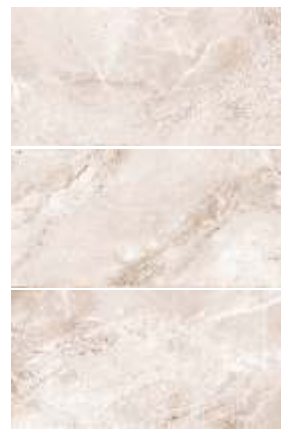
RANDOM PHASES

RENISON TAN



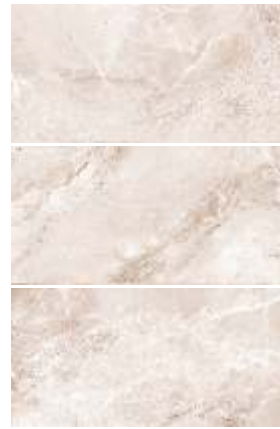
RANDOM PHASES

ROLETT BEIGE



RANDOM PHASES

ROLETT BEIGE



RANDOM PHASES

ROSALIA BIANCO



RANDOM PHASES

ROYAL STATUARIO



RANDOM PHASES

SABENN BEIGE



RANDOM PHASES

SANTRY BROWN



RANDOM PHASES

SANTRY GREY



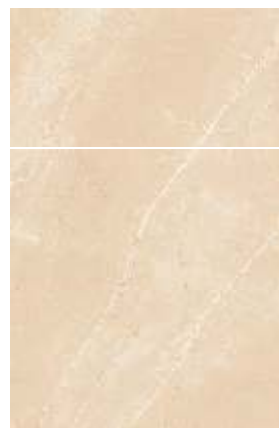
RANDOM PHASES

SEAGO RUST



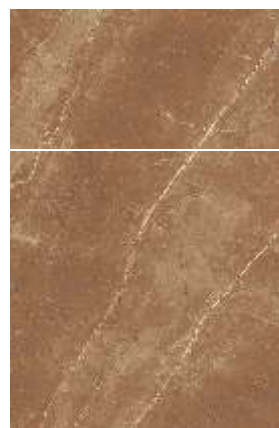
RANDOM PHASES

SENETT BEIGE



RANDOM PHASES

SENETT CHOCO

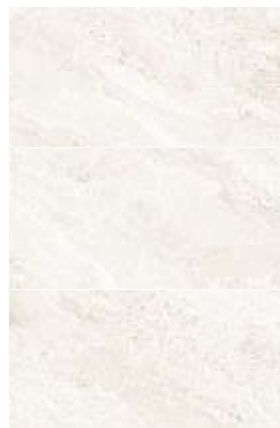


RANDOM PHASES

SICILLIA BEIGE



TABNER SILVER



RANDOM PHASES

TECTRIX GREEN



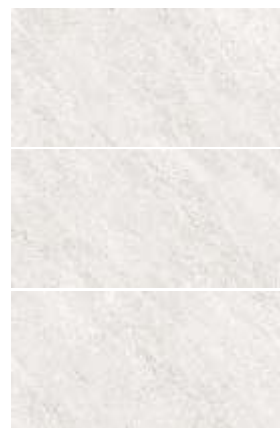
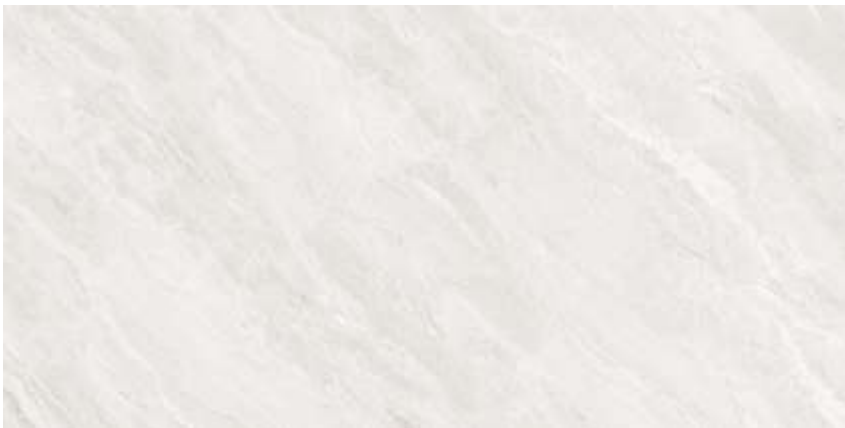
RANDOM PHASES

TIZARD BLUE



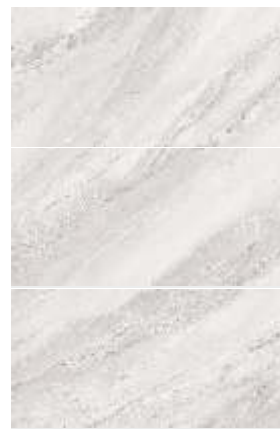
RANDOM PHASES

TORRENS SILVER



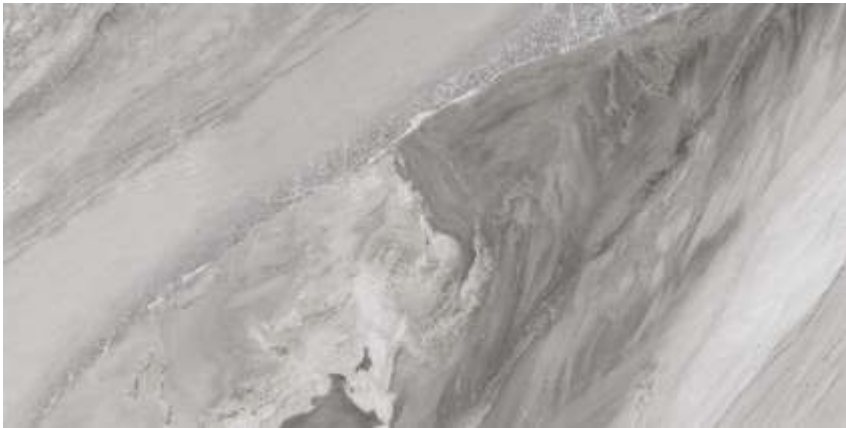
RANDOM PHASES

UFFEN GREY



RANDOM PHASES

UFFEN NERO



RANDOM PHASES

UFFEN SILVER



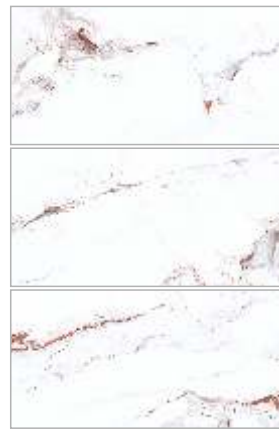
RANDOM PHASES

VANNET GREY



RANDOM PHASES

VERNON PEARL



RANDOM PHASES

VIZOR BRONZ



RANDOM PHASES

WESTEL WOOD



RANDOM PHASES



FLACK STATUARIO



KLAIR BLUE



RANDOM PHASES

KLAIR ORANGE



RANDOM PHASES



ALAIN BEIGE



ALAIN BROWN



RANDOM PHASES

ALAIN GREY



RANDOM PHASES



ALAIN SILVER



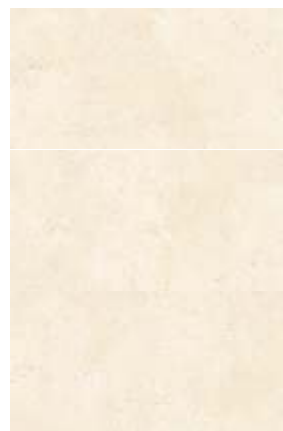
RANDOM PHASES

CARYL SILVER



RANDOM PHASES

CHICAGO BEIGE



RANDOM PHASES

CIMMERIAN BEIGE



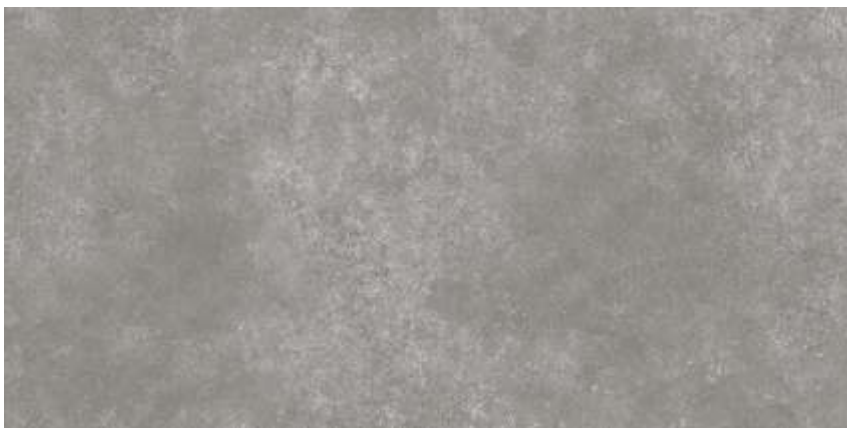
RANDOM PHASES

CIMMERIAN GOLD



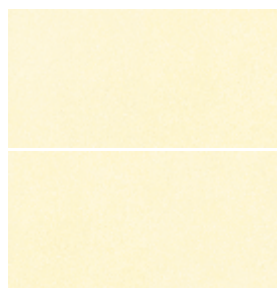
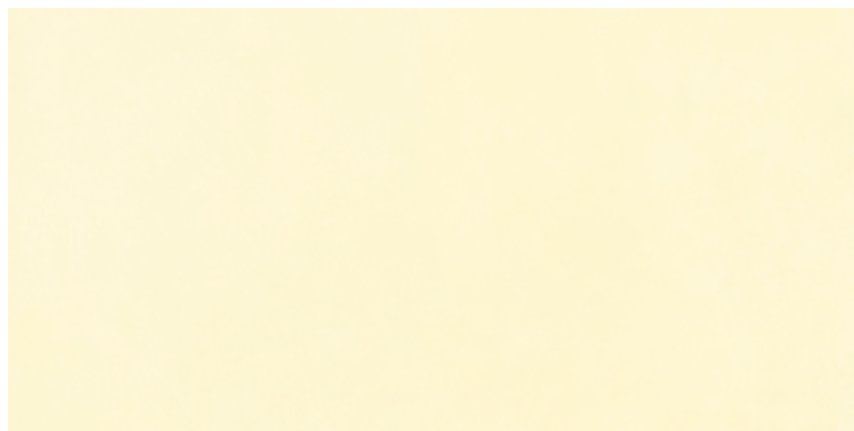
RANDOM PHASES

CIMMERIAN GRIS



RANDOM PHASES

CIMMERIAN IVORY



RANDOM PHASES

CIMMERIAN NERO



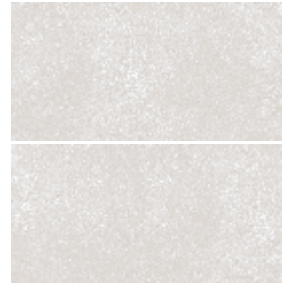
RANDOM PHASES

CIMMERIAN VERDE



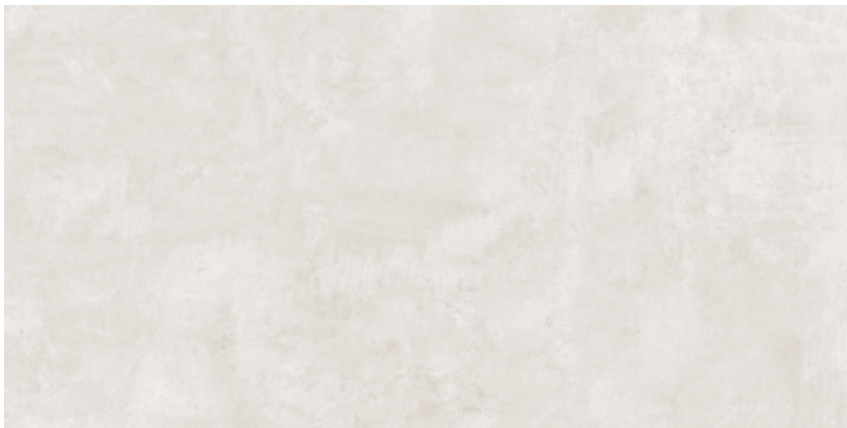
RANDOM PHASES

CIMMERIAN WHITE



RANDOM PHASES

DELVER SILVER



RANDOM PHASES

DEODAR CEDAR



RANDOM PHASES

DUCE BRONZE



RANDOM PHASES

EDISS WOOD



RANDOM PHASES

GINZBURG BROWN

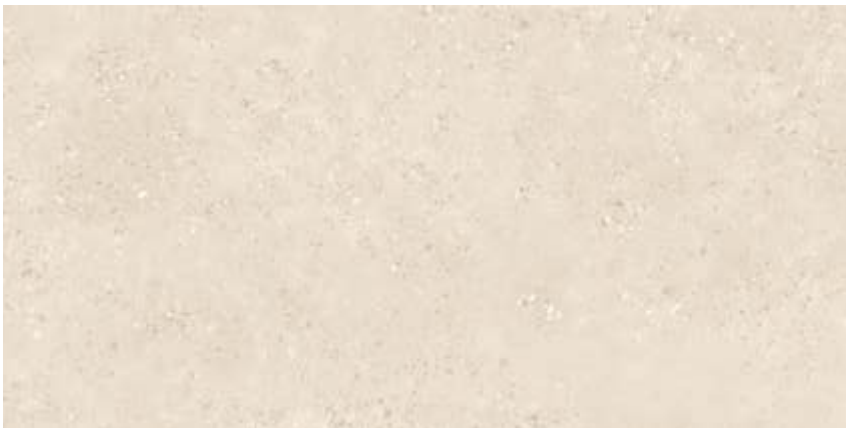


RANDOM PHASES

JUREL GREY



MERLIN BEIGE



RANDOM PHASES

PINEWOOD CAMEL



RANDOM PHASES

RADCLIFF CHOCO



RANDOM PHASES

REXWOOD BEIGE



RANDOM PHASES



REXWOOD BRONZ



RANDOM PHASES



REXWOOD VERDE



RANDOM PHASES

SHELL GREY

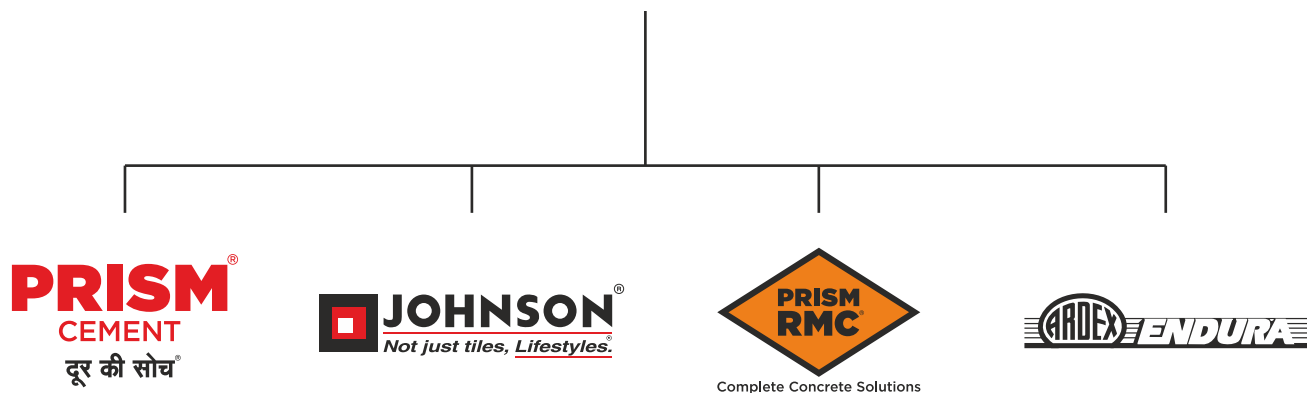


RANDOM PHASES

A journey from tiles to lifestyles - measured in square feet

H&R Johnson (India) is a division of Prism Johnson Limited, one of India's foremost Integrated Building Materials conglomerates.

PRISM JOHNSON LIMITED



Established in 1958, Johnson is one of the oldest and trusted brands in the country. Built on the strong and unswerving foundations of quality and innovation, this trust has only grown in these decades gone by; and continues to grow. Starting with tiles, the brand soon diversified into offering lifestyle solutions in the realms of Engineered Marble & Quartz and Bath Solutions. There by becoming India's most Integrated Lifestyle Solutions brand. Every product that comes bearing the H&R Johnson insignia is a symbol of the same quality and innovation focused on adding value to the lives of our consumers.

Pioneering Innovations, A Way of Life

At H&R Johnson the term innovation is at the heart of everything we do. That's why it is backed by credible research. Every product attempts to fill in a void left by conventional offerings in the category, in an innovative manner. It's this value we place on cutting-edge innovation that makes us strive for more and eventually deliver more. A quality and a way of working that has redefine consumer lifestyles and expectations.

- Anti-skid & Water-repellent Tiles for Bathrooms
- Rectified Wall Tiles
- Johnson Marbonite - Vitrified Wall and Floor Tiles
- Joint Free Tiles
- Large Format Slabs
- Digitally Printed Wall & Floor Tiles
- Germ Free Tiles & Sanitaryware
- Exterior & Industrial Flooring Solutions

India's Most Integrated Tile Manufacturing Company



Self-owned Felspar Mines



Making Punches & Dies



Manufacturing of Soluble Salts and Inks

Being India's most trusted tiling brand requires that trust to be maintained in every stage of developing each and every product that bears the name of the brand. That's why at H&R Johnson, our Felspar Mines are Self-owned, the soluble salts and inks are manufactured in-house, and even the dies and punches are made in-house. All, so that every step in the process comes with the same quality and assurance, that you expect from us.



Manufacturing Excellence

Johnson has the most modern manufacturing units across strategic locations in India. Our manufacturing facilities employ the best technology from world leaders in tile manufacturing equipment. All our plants are ISO compliant with both 9001 and 14001 certifications as well as OHSAS 18001 certification.



Certifications



Johnson is India's largest tile manufacturer. It's commitment to quality, service and innovation is backed by certification from the world's leading accreditation bodies.

ISO 9001: 2015

For implementing a Quality Management System for the Manufacture and Supply of Ceramic Tiles.

ISO 45001: 2018

For implementing an Occupational Health & Safety Management System for the Manufacturing of Ceramic Tiles.

ISO 14001: 2015

For implementing an Environmental Management system for the Manufacturing of Ceramic Tiles

Certificate of Merit for Energy Conservation, Bureau of Energy Efficiency, Ministry of Power A Recognition for the efficient use of energy and its conservation.

Plant has received Safety award by National Safety Council

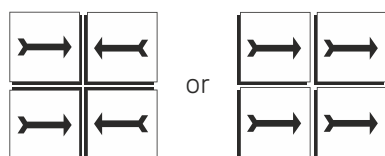
GreenPro is a product certification given by the Confederation of Indian Industry (CII) which signifies environmentally conscious life cycle of the production; certification for eco-friendly products that helps customers make an informed choice towards sustainable products.

Griha

Griha council is a joint initiative of Ministry of New and Renewable Energy, GOI and The Energy and Resources Institute of implement Griha. India's national rating system for sustainable habitats

Johnson Tile Fixing Instructions

1. Plaster the surface of the floor where the tiles will be laid with smooth finish and complete the plastering and curing at least two weeks prior to laying.
2. Before fixing Johnson tiles lay them out in the desired pattern and make sure that they give an acceptable blend of shade, colour and design. Please note that certain amount of shade and size variation is inherent in the manufacture of vitrified ceramic tiles. Certain products will have Intentional shade or colour variation to get the natural and elegant look, which is an integral element of the design resembling naturally created veins or shaded effect.
3. The company bears no responsibility towards the tiles exposed to any outside process like transfers, printing, firing etc.
4. For fixing tile, we recommend using an appropriate product from the range of tile fixing adhesives from the ARDEX ENDURA (INDIA) PVT. LTD. Please follow the adhesive manufacturer's recommendations and instructions for best results.
5. For fixing Johnson tiles on the floor, using sand and cement, follow the instructions given below:
 - a) Use cement and sand mortar in the ratio of 1:4. Add some water to create a consistent paste.
 - b) Once the mixing has been completed do not add any further water and use the same within one hour.
 - c) Apply a 20-30 mm layer of bedding material over an area of 1 square meter at a time on the surface of the area. Apply a fine slurry to the back of the tile to ensure proper and full bedding. Press gently for even adherence at the back of the tile. **DO NOT USE AN IRON HAMMER OR SOME HEAVY MATERIAL TO PRESS THE TILE.**
6. For fixing Johnson tiles on Wall / Dado, we recommend using an appropriate product from the range of tile fixing adhesives from the ARDEX ENDURA (INDIA) PVT. LTD. with proper troweling method for 100 per cent coverage behind the tiles and for peerless bonding. Please follow the adhesive manufacturer's recommendations and instructions for best results. We do not recommend the use of sand and cement for fixing on Dado.
7. Mark and lay out the tiles from the center of the area to be laid so that cut tiles, if any, will be on the outer edges towards the walls.
8. The work size which we try to maintain for better technical performance is 60 cm x 60 cm on average. For large format tiles we do not recommend tiles to be laid without a gap. Plastic tile spacers can be used at each tile corner to maintain even grout lines between the tiles. It is advisable to maintain a gap of 2 mm to 6 mm between every tile to allow for possible expansion as per ISO tolerance norms.
9. Complete the laying process by pressing the cut Johnson tiles firmly into place along the walls/floors.
10. Allow 3-4 days for bed curing. After this period fill the joints with cementitious or epoxy grouts from ARDEX ENDURA (INDIA) PVT. LTD. Use of grout sealant is recommended for keeping the grout free of dust.
11. Fifteen minutes after finishing the grouting process, wipe off excess grout with a damp sponge and polish the tiles with a soft and dry cloth for a clean surface. The tiles can also be cleaned with a mild acid (However, Hydrofluoric acid and its derivatives should not be used). You can also use tile & stone cleaners from ARDEX ENDURA (INDIA) PVT. LTD.
12. Please note that the company does not accept any liability in case of problems arising out of non-adherence to these fixing instructions.
13. **THE COMPANY WILL BEAR NO RESPONSIBILITY AFTER THE TILES ARE FIXED.**
14. Kindly look for an arrow (➔) on the back of the tile and follow the laying pattern as shown in Pic-1:-



NOTHING IN THESE INSTRUCTION IS A SUBSTITUTE FOR GOOD WORKMANSHIP AND SUPERVISION

ELITE PLUS

TECHNICAL SPECIFICATIONS

S. No	Property	ISO 13006:2018 / EN 14411 Group BIII Requirement	Indian Standard IS 15622:2017 Group B III Requirement	Johnson (Vitrified) Value	Test Method
	Dimensions & Surface Quality	whichever is less applicable. Rectified edge	Rectified		
1	Deviation in Length & Width	± 0.3% or ±1.0mm	± 0.1 %	± 0.1 %	ISO 10545-2 / IS 13630-1
2	Deviation in Thickness	± 10% or ±0.5mm	± 5 %	± 4 %	ISO 10545-2 / IS 13630-1
3	Straightness of Sides	± 0.3% or ±0.8mm	± 0.1 %	± 0.1 %	ISO 10545-2 / IS 13630-1
4	Rectangularity	± 0.3% or ±1.5mm	± 0.1 %	± 0.1 %	ISO 10545-2 / IS 13630-1
5	Surface Flatness	± 0.4% or ±1.8mm	± 0.5 %	± 0.2 %	ISO 10545-2 / IS 13630-1
6	Surface Quality	Min 95% free from visible defects	Min 95% free from visible defects	> 95% free from visible defects	ISO 10545-2 / IS 13630-1
	Physical Property				
7	Water Absorption	≤ 0.5%, individual Max 0.6%.	Average ≤0.08%, Individual 0.1%, Max	≤ 0.05%	ISO 10545-3/ IS 13630- 2
8	Modulus of Rupture	≥ 35 N/mm2, Individual 32N/mm2, Min	Average 35 N/mm2, Individual 32N/mm2, Min	≥ 38 N/mm2	ISO 10545-4/ IS 13630-6
9	Breaking Strength	700 N Min for thickness < 7.5 mm, 1300 Min for thickness ≥ 7.5 mm	700 N Min for thickness < 7.5 mm, 1300 Min for thickness ≥ 7.5 mm	≥ 1500 N	ISO 10545-4 / IS 13630-6
10	Moisture expansion	Report value	0.02 mm/m, Max	≤ 0.02 mm/m	ISO 10545-10 / IS 13630-3
11	Scratch hardness of surface (Moh's scale)	Not Required	5, Min	≥5	IS 13630 -13
12	Resistance to Surface Abrasion of Glazed Tiles for Floor Application	report abrasion class & Cycle passed	Class II , Min	PEI II- III	ISO 10545-7 /IS 13630 -11
13	Coefficient of Linear Thermal Expansion	Report value	Max, 6 x 10-6 K-1	≤ 6 x 10-6 K-1	ISO 10545-8/ IS 13630-4
14	Thermal Shock Resistance	Report result	10 cycles Min	No Damage	ISO 10545-9 / IS 13630 -5
15	Crazing Resistance of Glazed Tiles	Report result	4 cycles @7.5 bar Min	No Damage	ISO 10545-11/ IS 13630-9
16	Impact Resistance Coefficient of Restitution	Report value	0.55, mm	≥ 0.55	ISO 10545-5 /IS 13630 -14
17	Slip Resistance for Floor Application	Report value	Manufacturer to declare	≥0.4	ANSI B101.3
18	Frost Resistance	Report result	required if requested by purchaser	No Damage	ISO 10545-12 / IS 13630-10
19	Bulk Density (g/cc)	Report Value	2.2, Min	≥ 2.2	ASTM C373-16 / IS 13630-2
20	Color Resistance to UV light	Report result	-	No change in colour	DIN 51094
21	Chemical Property (cleansers except to cleansing agents containing Hydrofloric acids and its compounds)				
a	Resistance to Staining - Glazed Tiles	Min Class 3	Class 1, Min	Class 3, (ISO)/ Class 1 (BIS)	ISO 10545-14 / IS 13630-8
b	Resistance to Household Chemicals and Swimming Pool water cleansers	GB	AA	GB/AA	ISO 10545-13 / IS 13630-8
c	Resistance to acids and alkalis (Glazed Tiles)	Report result	Report result	GA	ISO 10545-13 /IS 13630 -8

* ISO / IS technical specifications for Johnson tiles are applicable only for premium /1st Quality tile
Please inspect all tiles prior to installation, company will not entertaining complaints once tiles are laid/ fixed

PACKAGING DETAILS

Product	Nominal Size (cm)	No of Tiles/Box	Approx Area/Box (sq m)	Approx Weight/Box (kgs)	Approx Cartons/ 20' Container	Approx Area per Container (sq m)
Johnson 60x120 Wall Tiles	60x120	2	1.44	28	964	1388

YOU CAN ALSO REACH US AT

Region	Branch	Tel.:
East	Kolkata	033-46021880
	Bhubaneshwar	0674 6539836/37/2430240
	Siliguri	9836065812
	Guwahati	8135846661/7575900492
	Ranchi	9576038118
West	Mumbai	022-40647500
	Thane	022-25867600 / 666
	Pune	020-41301164 / 31
	Aurangabad	8669600748
	Ahmedabad	079-48480010
	Raipur	0771-4919129
	Indore	0731-4007441
North	Jalandhar	0182-4505038 / 39
	Chandigarh	0172-4697100
	Delhi	011-49526600

Region	Branch	Tel.:
North	Jaipur	0141-2368329
	Lucknow	0522-2721699
	Varanasi	0542-2222620
	Patna	9576038781
South	Bengalure	080-22234310/080-22234330
	Hyderabad	040-29802270 / 71 / 72
	Vijayawada	9666429666
	Vishakhapatnam	0891-2796376
	Tirupati	9121228960
	Kochi	0484-4871277
	Kozhikode	0422-4382698
	Thiruvananthapuram	0471-2720141
	Chennai	044-28544116 / 28541881
	Coimbatore	0422-4382698
	Madurai	0452-4355584 / 4355594
	Trichy	9486718544

EXPERIENCE CENTERS

Location	Address	Tel.:
Kolkatta	HOUSE OF JOHNSON - 83 JBS Haldane Avenue, TOPSIA Trinity towers Kolkata - 700046	033-46021880
Guwahati	HOUSE OF JOHNSON - 1st Floor, Above Royal Riders Honda, Near Rahul Kata, Pub Bragaon, Garchuk, Guwahati - 781035	7575900492
Bhubaneshwar	HOUSE OF JOHNSON - Ray Tower, 1st Floor, N4/237, Indradhanu market, IRC Village, Nayapalli, Bhubaneshwar, Orissa - 751015	0674 6539836/37/2430240
Patna	HOUSE OF JOHNSON - SK Builders and colonizer Pvt.Ltd.,1st Floor, SK Palace, Saguna more, Bihar - 801503.	9702651243
Chandigarh	HOUSE OF JOHNSON - SCO 214, sector14, Panchkula, Haryana - 134109	0172-4637724
Delhi	HOUSE OF JOHNSON - First & Mezzanine Floor, B-1/G-3, Mohan Industrial Estate, Mathura Road, New Delhi - 110094.	11-49526600
Lucknow	HOUSE OF JOHNSON - 1st Floor, Prithvi Ratan Height,Plot No CP-4, Vijayant khand - 3, Gomtinagar Yojna, Lucknow - 226028	0522-2721699
Varanasi	HOUSE OF JOHNSON - Ashakunj, 1st floor, D59/103 D4, Opp Siddharth Complex, Sigra Mehmoorganj Road, Varanasi - 221010	0542-2222620
Aurangabad	House Of Johnson Aurangabad - Gut No 16/44, NH-211, Near Balapur Phata, Near Ramkisan Lawns, Beed Bypass Road Aurangabad 431005	8669600748
Pune	HOUSE OF JOHNSON - Sable House, Poona Snuff Factory, Sr. No 11A, Plot 408/4/5, Satara Road, Gultekadi, Pune - 411037	7350009364
Thane	HOUSE OF JOHNSON - Shop No.5, Gr.Floor, Cosmos Jewels, Near Dmart, Anand Nagar, Ghodbunder Road, Thane West - 400615	8424003247
Mumbai - Andheri	HOUSE OF JOHNSON - 1st flr, Bonanza, Sahar Plaza, Nr Hotel Kohinoor continental, J B Nagar, Andheri Kurla Road, Andheri East, Mumbai - 400059	8108030975
Ahmedabad	HOUSE OF JOHNSON - F 106-107, Shivalik Plaza, IIM Road, Panjrapole Cross Road, Ahmedabad, Gujarat - 380015	079-48480010
Indore	HOUSE OF JOHNSON - Shop No 5, 6, 7 and 8, Upper Ground Floor, Exotica, Shalimar Township, Village Niranjapur, A. B. Road, Indore, Madhya Pradesh - 452001	0731-4007441
Raipur	HOUSE OF JOHNSON - 2nd Floor, MM Silver Plaza, Opp Udyog Bhawan, Ring Road - 1, Raipur, Chattisgarh - 492001	771-4919129
Coimbatore	HOUSE OF JOHNSON - Elysium Towers, Park Gate Rd, No. 21, ATT Colony, Gopalapuram, Coimbatore - 641018	0422-4382698
Chennai	HOUSE OF JOHNSON - 82, 84 & 86 Bascon Maeru, 1st floor, Kodambakkam High Road, Nungambakkam, Chennai - 600034	044-48611632
Kochi	HOUSE OF JOHNSON - Door no. 11/300 f, Next to VTJ Hyundai, NH 47 Kundanoor, Maradu, Kochi, Ernakulam - 682304	0484-4871277
Kozhikode	HOUSE OF JOHNSON - Tilal Tower, Near Nexa Showroom, Kudilthod, Malaparamba bypass, Kozikode, Kerala - 673017	0495-2357505
Thiruvananthapuram	HOUSE OF JOHNSON -1st Floor, Sreedhanya Apex, TC 22/3720 (4) Vellayambalam, Sasthamangalam PO, Thiruvananthapuram, Kerala - 695010	0471-2720141
Bengalure	HOUSE OF JOHNSON - No.39, Rajaram Mohan Roy Road , Opp. Kanteerava indoor Stadium, Bengalure - 560027	080-22234310/080-22234330
Bengalure	HOUSE OF JOHNSON - Dodda Banaswadi, Opp. New Baldwin Residential School, Bengalure-560043	080-41692976 / 41692060
Hyderabad	HOUSE OF JOHNSON - SP Jubilee Crown (3rd Floor) Plot - 1270, Road No.36, Jubilee Hills, Hyderabad - 500033	8897525143

For address and contact numbers of our Johnson Exclusive Showrooms and Authorized Retailers, please visit our website www.hrjindia.com



Toll Free No.: 1800-210-7484

WhatsApp No.: +91 84510 57484

Email: tiles.customercare@prismjohnson.in

For Export Enquires, Email:

exports.customercare@prismjohnson.in

PRISM JOHNSON LIMITED

H & R JOHNSON (INDIA) DIVISION

Corporate Office:

7th Floor, Windsor, C. S. T. Road, Kalina,
Santacruz (East), Mumbai - 400 098, India.

Tel: +91-22-40647300

Website: www.hrjohnsonindia.com

Registered Office: 305, Laxmi Niwas Apartments, Ameerpet
Hyderabad - 500016, Telangana, India.

Download App



Download E-Catalogue



HRJIndia



@hrjohnsonofficial



Hrjohnsonindia



hrjohnson_india



h-&-r-johnson-india-prism-johnson-limited



HRJohnsonIndia1