

GRAND  
LEGACY OF  
**65**  
YEARS

 **JOHNSON**TILES<sup>®</sup>  
NOT JUST TILES, LIFESTYLES.<sup>®</sup>

**ELITE PLUS & ELITE  
WALL COLLECTION**

30x60 CM & 30x45 CM

**JOHNSON**



# WALL TILES COLLECTION

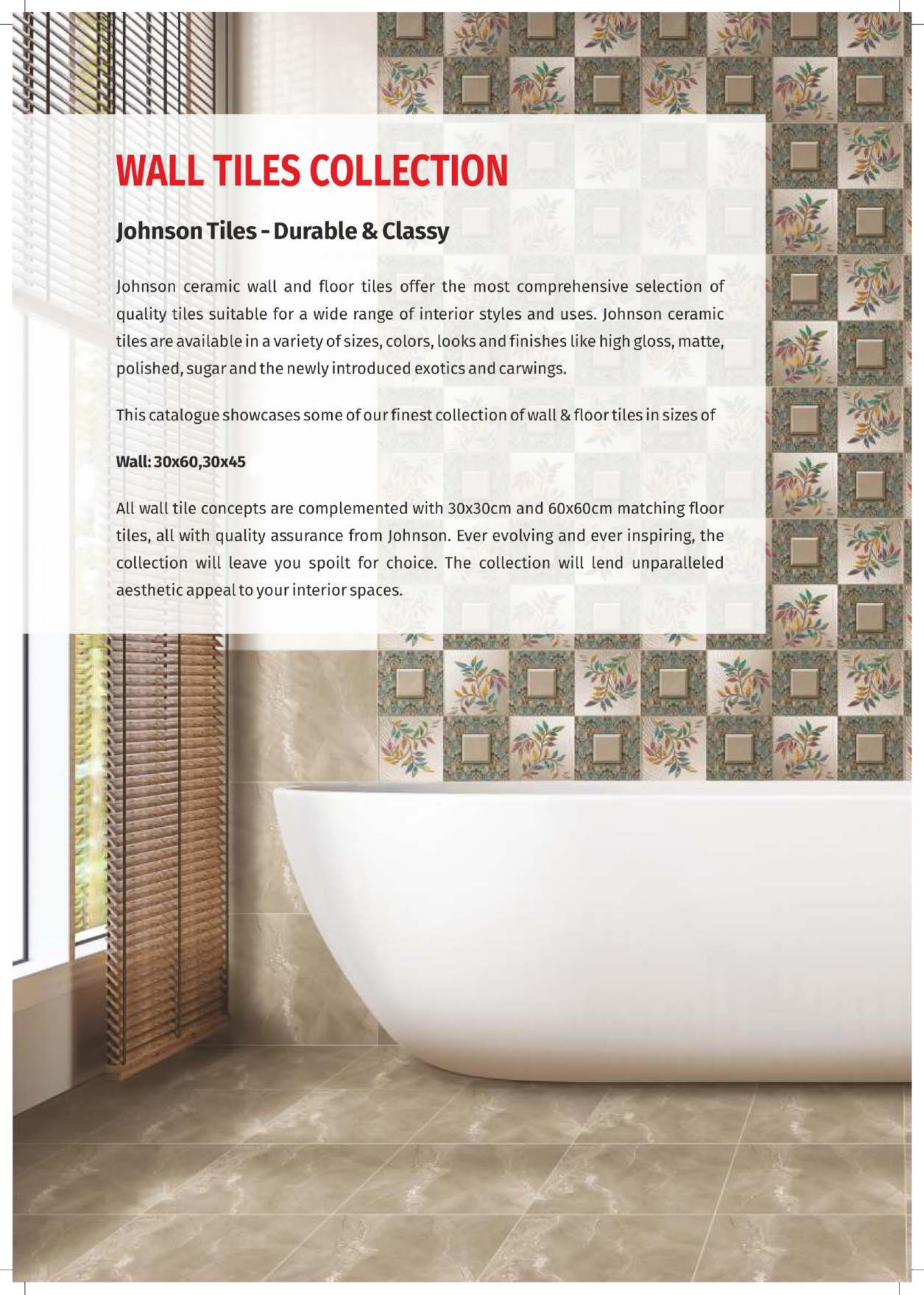
## Johnson Tiles - Durable & Classy

Johnson ceramic wall and floor tiles offer the most comprehensive selection of quality tiles suitable for a wide range of interior styles and uses. Johnson ceramic tiles are available in a variety of sizes, colors, looks and finishes like high gloss, matte, polished, sugar and the newly introduced exotics and carwings.

This catalogue showcases some of our finest collection of wall & floor tiles in sizes of

**Wall: 30x60,30x45**

All wall tile concepts are complemented with 30x30cm and 60x60cm matching floor tiles, all with quality assurance from Johnson. Ever evolving and ever inspiring, the collection will leave you spoilt for choice. The collection will lend unparalleled aesthetic appeal to your interior spaces.



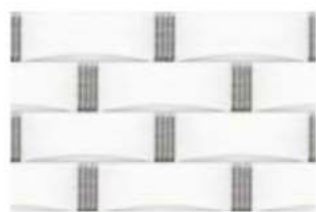


ELITE

30X45 CM

GLOSSY

WALL



ABACIST LT



AKIN LT



ALTREE LT



AQUARIA LT



ABACIST HL1



AKIN HL



ALTREE HL



AQUARIA HL 1



ABACIST HL2



AKIN DK



ALTREE DK



AQUARIA HL 2



ABACIST DK



AQUARIA DK

## WALL



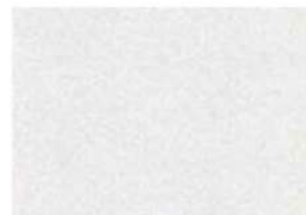
BESTER LT



BELFITT LT



CALLON LT



CERRO



BESTER GREEN HL



BELFITT HL\*



CALLON HL



CERRO KITCHEN HL\*



BESTER GREEN DK



CALLON DK

## WALL



CORAL DOLPHIN LIGHT



DAKINS LT



DIAMOND MIX



DOVER LIGHT



CORAL DOLPHIN HL1



DAKINS HL



DIAMOND



DOVER MESH HL



CORAL DOLPHIN HL2



CORAL DOLPHIN DARK



DOVER DARK

## WALL



DONZO LT



DONZO DK



EDLEY LT



ELISIMO LT



DONZO HL 1



EDLEY HL



ELISIMO HL



DONZO HL 3



EDLEY DK

ELITE

30X45 CM

GLOSSY

WALL



ESSENZA LIGHT



FALX LT



FERIS LT



GANTER LT



ESSENZA HL 1



FALX HL



FERIS HL



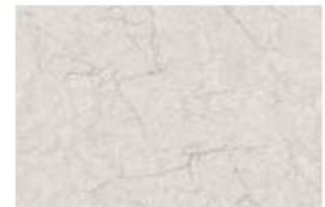
GANTER HL1



ESSENZA HL2



FERIS DK



GANTER DK1



ESSENZA DARK



## WALL



GERALD LT



GRAINFLOW LIGHT



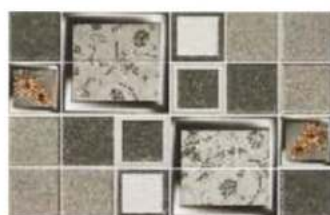
GEMMA LIGHT



GLOW LIGHT



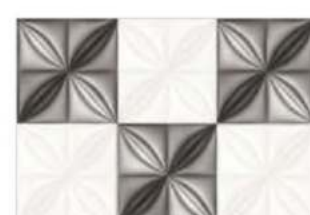
GERALD HL



GRAINMAGIC HL



GEMMA HL



GLOW HL



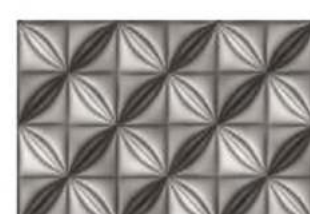
GERALD DK



GRAINFLOW DARK



GEMMA DARK



GLOW DARK





## WALL



GRAFF LT



GRONZA LT



HABINA LT



JUDE DK



GRAFF HL



GRONZA HL



HABINA HL



JUDE HL



GRAFF DK



GRONZA DK



HABINA DK

ELITE

30X45 CM

GLOSSY

WALL



KELLETT LT



KERINS LT



LANGER LT



MABLEY LT\*



KELLETT HL



KERINS HL



LANGER HL



MABLEY HL1



KELLETT DK



KERINS DK



LANGER DK

## WALL



MAHIBA LT



MALSOM WHITE



MALTESE LT



POBLES LIGHT



MAHIBA HL1



MALSOM HL1



MALTESE HL



POBLES HL



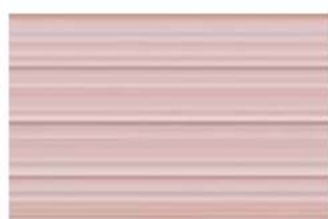
MAHIBA HL2



MALSOM HL2



MALTESE DK



MAHIBA DK



## WALL



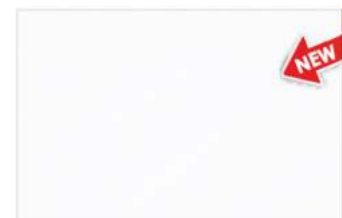
RADDISON LT



ROVER WHITE



RACKLIFF LT



SAPIER LT



RADDISON HL1



ROVER KITCHEN\*



RACKLIFF HL



SAPIER HL



RADDISON HL2



ROVER KITCHEN\*



RACKLIFF DK



SAPIER DK

## WALL



TINTON LT



ULLIOT LT\*



VARIAN LT



VERRIER LT



TINTON HL



ULLIOT HL



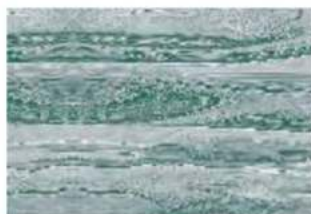
VARIAN HL



VERRIER HL



TINTON DK

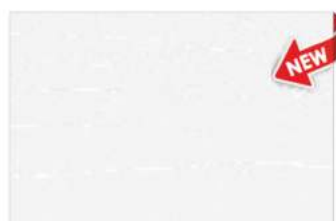


ULLIOT DK\*

## WALL



TINTON LT



WENZEL LT



WOODY LIGHT



ZAMBIA LIGHT



TINTON HL



WENZEL HL



WOODY HL



ZAMBIA HL



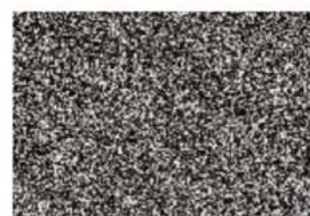
TINTON DK



WENZEL DK



WOODY MAGIC



ZAMBIA DARK



WOODY DARK



ELITE

30X45 CM

GLOSSY

WALL



MUSTER LT



NICOLAS LT



NIRMAN LT



PENTA LT



MUSTER HL



NICOLAS HL



NIRMAN HL



PENTA HL



MUSTER DK



NICOLAS DK



NIRMAN DK



PENTA DK

ELITE

30X45 CM

GLOSSY

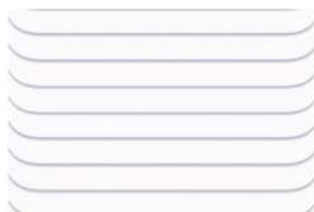
WALL



PLUTONIX HL KIT R1



SATVARIO HL



TENTER LT



UNSER LT



PLUTONIX LT



SATVARIO LT



TENTER HL1



UNSER HL2



TENTER HL2



UNSER DK

ELITE

30X45 CM

GLOSSY

WALL



WILLOW LT



WILLOW HL R1



WILLOW DK

WALL



DIAMOND GOLD



DIAMOND GOLD



KRISHNA BASE



QUADRA WHITE



VINAYAK HL 1



GANPATI HL 1



KRISHNA HL 1



POOJA GHAR HL 1



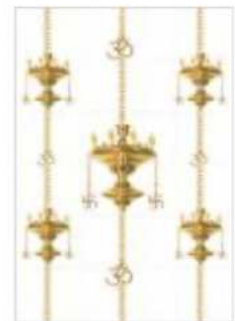
VINAYAK HL 2



GANPATI HL 2



KRISHNA HL 2



POOJA GHAR HL 2



WALL



ACHINTYA - LT



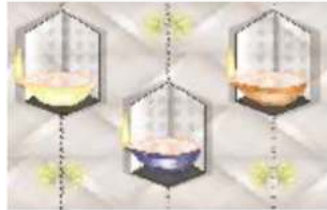
AVIGHNA LT



MAITRI - LT



ACHINTYA - HL-1



AVIGHNA HL1



MAITRI - HL-1



ACHINTYA - HL-2



AVIGHNA HL2



MAITRI - HL-2

ELITE

30X45 CM

GLOSSY

WALL



FAUST GREY



BOUNJOUR SKY



MATRIXEN RUST\*



FLEXER BROWN



HALTON SKY



CARLOS BLUE



NIX NERO



CALCINE WH



CARLOS BRONZ



ZORA NERO\*



DAPHNIA GREY



NIX BROWN



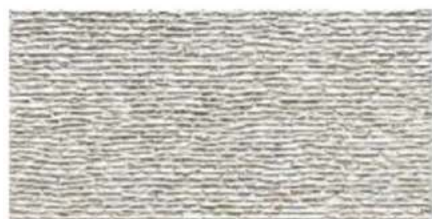
FLEXER BLUE ELV

# ELITE PLUS

30X60 CM

GLOSSY

## WALL



AGATES BIANCO



ALMITOS -LIGHT



ARISTO LIGHT



AGATES NERO



ALMITOS -HL



ARISTO HL



ALMITOS -DARK



ARISTO DARK

# ELITE PLUS

30X60 CM

GLOSSY

## WALL



ARIZONA BRIGHT



BRITTNY LT



CAIRNS LT



ARIZONA HL



BRITTNY HL 1



CAIRNS HL



ARIZONA DEEP



BRITTNY HL 2



BRITTNY DK





# ELITE PLUS

30X60 CM

GLOSSY

## WALL



CRONOS LIGHT



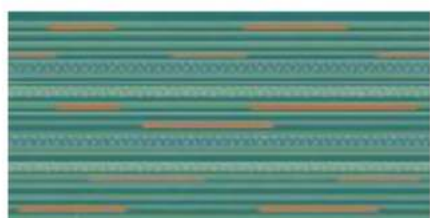
DEEX LT



EMELINA LT



CRONOS HL



DEEX HL (Tapestry)



EMELINA HL



EMELINA DK

# ELITE PLUS

30X60 CM

GLOSSY

## WALL



EUREKA LIGHT



EVERIX LT



FEARN LT



EUREKA HL



EVERIX HL (Tapestry)



FEARN HL



EUREKA DARK



EVERIX DK

# ELITE PLUS

30X60 CM

GLOSSY

## WALL



GARFIN LT



GEM WOOD LT\*



GLENTON LT



GARFIN HL



GEM WOOD HL\*



GLENTON HL



GARFIN DK\*



GEM WOOD DK\*



GLENTON DK

# ELITE PLUS

30X60 CM

GLOSSY

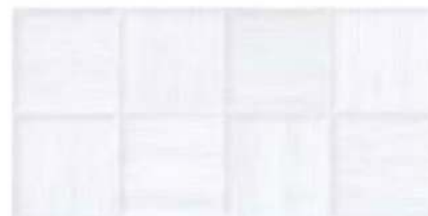
## WALL



HANNET LT\*



HENDRIX LT



IDEM LT (Tapestry)



HANNET HL



HENDRIX HL



IDEM HL\* (Tapestry)



HENDRIX DK



IDEM DK (Tapestry)



# ELITE PLUS

30X60 CM

GLOSSY

## WALL



IKIN LT



INDIZO LT\*



JANE LT



IKIN HL



INDIZO HL 1



JANE HL



IKIN DK



INDIZO HL 2



INDIZO DK\*

# ELITE PLUS

30X60 CM

GLOSSY

## WALL



JANICE LT



JESSIE LT (Tapestry)



KERASIX RHYTHM



JANICE HL



JESSIE HL (Tapestry)



KERASIX IVORY



JANICE DK



KERASIX FERRO





# ELITE PLUS

30X60 CM

GLOSSY

## WALL



KERIS LT



LACTIM LT\*



LYUS LT\*



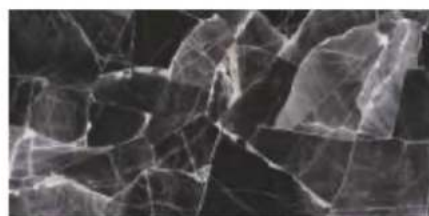
KERIS HL



LACTIM HL



LYUS HL



LACTIM DK\*



# ELITE PLUS

30X60 CM

GLOSSY

## WALL



MARGRET LIGHT



MARISOL OLIVE -LIGHT



MARISOL ROSE -LIGHT



MARGRET HL



MARISOL OLIVE -HL



MARISOL ROSE -HL



MARISOL OLIVE -DARK



MARISOL ROSE -DARK



# ELITE PLUS

30X60 CM

GLOSSY

## WALL



MIRANDA LIGHT



NICOLO LIGHT



ORBIT LIGHT



MIRANDA HL



NICOLO HL



ORBIT HL



MIRANDA DARK



ORBIT DARK

## WALL



PARTIN LT



PEARL CRYSTAL SNOW



POPLAR LT



PARTIN HL



PEARL CRYSTAL SYMPHONY



POPLAR HL 1



PARTIN DK



PEARL CRYSTAL NERO



POPLAR HL 2



POPLAR DK

# ELITE PLUS

30X60 CM

GLOSSY

## WALL



RENTER DK



LABRET LT\*



SAFELL LT



RENTER HL1 (Tapestry)



LABRET HL



SAFELL HL (Tapestry)



RENTER HL2 (Tapestry)



LABRET DK\*

# ELITE PLUS

30X60 CM

GLOSSY

## WALL



TAMMIS LT



THUNDER LIGHT



UDDIN LT



TAMMIS HL1



THUNDER HL-1



PUNCH



UDDIN HL1



PUNCH



TAMMIS HL2



THUNDER HL-2



PUNCH



UDDIN HL2



THUNDER DARK



UDDIN DK

# ELITE PLUS

30X60 CM

GLOSSY

## WALL



UNITAS LT\*



URANUS LIGHT



UNITAS HL



URANUS HL-1



UNITAS DK



URANUS DARK

ELITE PLUS

30X60 CM

MATT

WALL

---



EMOLA LIGHT



EMOLA DEKOR

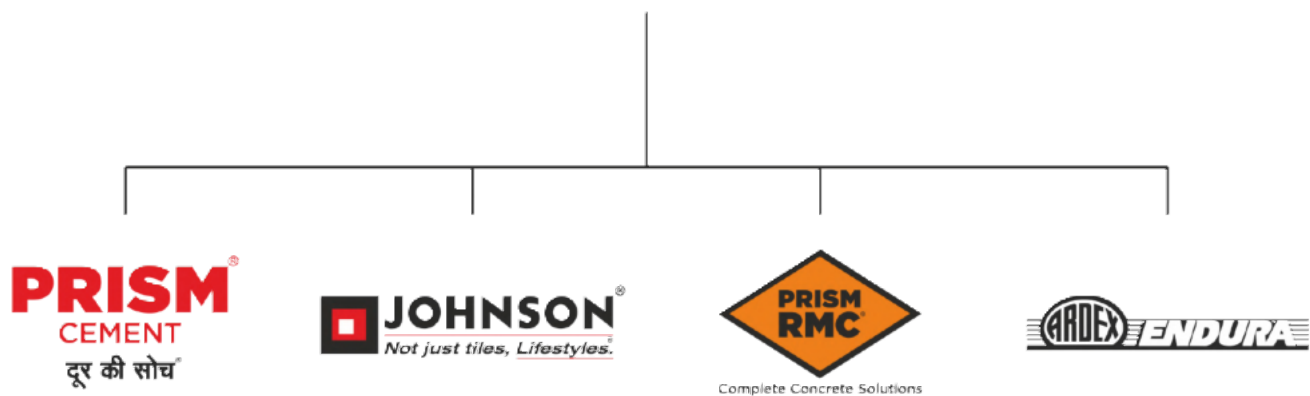


EMOLA DARK

# A journey from tiles to lifestyles - measured in square feet

H&R Johnson (India) is a division of Prism Johnson Limited, one of India's foremost Integrated Building Materials conglomerates.

## PRISM JOHNSON LIMITED



Established in 1958, Johnson is one of the oldest and trusted brands in the country. Built on the strong and unswerving foundations of quality and innovation, this trust has only grown in these decades gone by; and continues to grow. Starting with tiles, the brand soon diversified into offering lifestyle solutions in the realms of Engineered Marble & Quartz and Bath Solutions. There by becoming India's most Integrated Lifestyle Solutions brand. Every product that comes bearing the H&R Johnson insignia is a symbol of the same quality and innovation focused on adding value to the lives of our consumers.

## Pioneering Innovations, A Way of Life

At H&R Johnson the term innovation is at the heart of everything we do. That's why it is backed by credible research. Every product attempts to fill in a void left by conventional offerings in the category, in an innovative manner. It's this value we place on cutting-edge innovation that makes us strive for more and eventually deliver more. A quality and a way of working that has redefine consumer lifestyles and expectations.

- Anti-skid & Water-repellent Tiles for Bathrooms
- Rectified Wall Tiles
- Johnson Marbonite - Vitrified Wall and Floor Tiles
- Joint Free Tiles
- Large Format Slabs
- Digitally Printed Wall & Floor Tiles
- Germ Free Tiles & Sanitaryware
- Exterior & Industrial Flooring Solutions



# India's Most Integrated Tile Manufacturing Company



Self-owned Felspar Mines



Making Punches & Dies



Manufacturing of Soluble Salts and Inks

Being India's most trusted tiling brand requires that trust to be maintained in every stage of developing each and every product that bears the name of the brand. That's why at H&R Johnson, our Felspar Mines are Self-owned, the soluble salts and inks are manufactured in-house, and even the dies and punches are made in-house. All, so that every step in the process comes with the same quality and assurance, that you expect from us.



## Manufacturing Excellence

Johnson has the most modern manufacturing units across strategic locations in India. Our manufacturing facilities employ the best technology from world leaders in tile manufacturing equipment. All our plants are ISO compliant with both 9001 and 14001 certifications as well as OHSAS 18001 certification.



## Certifications



Johnson is India's largest tile manufacturer. It's commitment to quality, service and innovation is backed by certification from the world's leading accreditation bodies.

ISO 9001: 2015

For implementing a Quality Management System for the Manufacture and Supply of Ceramic Tiles.

ISO 45001: 2018

For implementing an Occupational Health & Safety Management System for the Manufacturing of Ceramic Tiles.

ISO 14001: 2015

For implementing an Environmental Management system for the Manufacturing of Ceramic Tiles

Certificate of Merit for Energy Conservation, Bureau of Energy Efficiency, Ministry of Power A Recognition for the efficient use of energy and its conservation.

Plant has received Safety award by National Safety Council

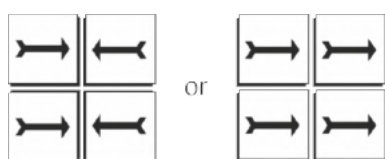
GreenPro is a product certification given by the Confederation of Indian Industry (CII) which signifies environmentally conscious life cycle of the production; certification for eco-friendly products that helps customers make an informed choice towards sustainable products.

Griha

Griha council is a joint initiative of Ministry of New and Renewable Energy, GOI and The Energy and Resources Institute of implement Griha. India's national rating system for sustainable habitats

# Johnson Wall Tile Fixing Instructions

1. Plaster the surface to be tiled with a good finish and complete the rendering and curing at least two weeks prior to tiling. **DO NOT FIX TILES ON FRESH SURFACE.**
2. Before fixing the tiles, lay them out in the desired pattern and make sure that they give an acceptable blend of shade, colour and design. Also make sure that the tiles are acceptable to your satisfaction. Please note that certain amount of shade & size variation is inherent in all ceramic products.
3. The company bears no responsibility towards the tiles exposed to outside process like transfers, printing, firing etc.
4. For fixing these tiles, we recommend using an appropriate product from the range of tile fixing adhesives from the ARDEX ENDURA (INDIA) PVT. LTD. Please follow the adhesive manufacturer's recommendations and instructions for best results.
5. For fixing the setiles using sand and cement, follow the instruction given below:
  - a) Use cement and sand mortar in the ratio of 1:3. Add some water to create a consistent paste.  
**DO NOT USE NEAT CEMENT FOR FIXING TILES.**
  - b) Once the mixing has been completed, do not add more water and use the mixture within one hour.
  - c) Soak the tiles in clean water at least 30 minutes before fixing.
  - d) Remove the tiles from the water and allow them to drain to ensure that there is no film of water on the tile surface.
  - e) Apply a 15-20mm layer of bedding material evenly over an area of 1 square meter at a time on the surface of the area. Apply a fine slurry to the back of the tile to ensure proper and full bedding. Press gently for even adherence at the back of the tile. **DO NOT USE AN IRON HAMMER OR SOME HEAVY MATERIAL TO PRESS THE TILE.**
6. Mark and lay out the tiles from the center of the area to be laid so that cut tiles, if any, will be on the outer edges towards walls.
7. The nominal/work size of the tile is as printed on the carton. It is advisable to maintain a gap of 1mm to 2mm between two tiles to allow for possible expansion as per ISO tolerance norms.
8. Wait for 24 hours after fixing the tiles. After this period, fill the joints with cementitious or epoxy grouts from ARDEX ENDURA (INDIA) PVT. LTD.
9. Fifteen minutes after the grouting process, wipe off the excess grout with a damp sponge and polish the tiles with a soft, dry cloth.
10. Please note that wall tiles are specially manufactured for use on the wall only. **DO NOT FIX WALL TILES ON THE FLOOR.**
11. For cleaning tiles, use a moist cloth or sponge with water or diluted soap solution. You can also use tile & stone cleaners from ARDEX ENDURA (INDIA) PVT. LTD. **DO NOT SCRUB OR SCRATCH.**
12. **DO NOT USE ACID / ALKALI / SOLVENT / OILS / CLEANING POWDERS ETC. FOR CLEANING TILES.**
13. Please note: The company does not accept any liability in case of problems arising out of non-adherence to these tile fixing instructions.
14. **THE COMPANY WILL BEAR NO RESPONSIBILITY AFTER THE TILES ARE FIXED.**



**NOTHING IN THESE INSTRUCTION IS A SUBSTITUTE FOR GOOD WORKMANSHIP AND SUPERVISION**

## TECHNICAL SPECIFICATIONS

S. No	Property	ISO 13006:2018 / EN 14411 Group B III Requirement	Indian Standard IS 15622:2017 Group B III Requirement	Johnson Wall (Rectified) Value	Test Method
	Dimensions & Surface Quality	whichever is less applicable. Rectified edge	Rectified		
1	Deviation in Length & Width	± 0.3% or ±1.0mm	± 0.2 %	± 0.2 %	ISO 10545-2 / IS 13630-1
2	Deviation in Thickness	± 10% or ±0.5mm	± 5 %	± 5 %	ISO 10545-2 / IS 13630-1
3	Straightness of Sides	± 0.3% or ±0.8mm	± 0.15 %	± 0.15 %	ISO 10545-2 / IS 13630-1
4	Rectangularity	± 0.3% or ±1.5mm	± 0.2 %	± 0.2 %	ISO 10545-2 / IS 13630-1
	Surface Flatness	± 0.4% or ±1.8mm	± 0.3 %	± 0.3 %	ISO 10545-2 / IS 13630-1
6	Surface Quality	Min 95% free from visible defects	Min 95% free from visible defects	> 95% free from visible defects	ISO 10545-2 / IS 13630-1
	Physical Property				
7	Water Absorption	Average > 10%, when the average exceeds 20%, this should be indicated by manufacturer. Individual min value 9%.	Average > 10%, when the average exceeds 20%, this should be indicated by manufacturer. Individual min value 9%.	E > 10%	ISO 10545-3/ IS 13630-2
8	Modulus of Rupture	12 N/mm <sup>2</sup> , Min for Thickness ≥ 7.5mm and 15N/mm <sup>2</sup> Min for thickness < 7.5 mm	12 N/mm <sup>2</sup> , Min for Thickness ≥ 7.5mm and 15N/mm <sup>2</sup> Min for thickness < 7.5 mm	≥ 12 N/mm <sup>2</sup> , for Thickness ≥ 7.5 mm and 15 N/mm <sup>2</sup> for Thickness < 7.5 mm	ISO 10545-4/ IS 13630-6
9	Breaking Strength	200 N, Min for thickness < 7.5 mm, 600 N Min for thickness ≥ 7.5 mm	200 N, Min for thickness < 7.5 mm, 600 N Min for thickness ≥ 7.5 mm	≥ 200 N, Min for thickness < 7.5 mm, ≥ 600 N for thickness ≥ 7.5 mm	ISO 10545-4 / IS 13630-6
10	Moisture expansion	Report value	0.04 mm/m, Max	≤ 0.04 mm/m	ISO 10545-10 / IS 13630-3
11	Scratch hardness of surface (Moh's scale)	Not Required	3, Min	≥ 4	IS 13630 -13
12	Impact Resistance Coefficient of Restitution	Report value	0.55, mm	≥ 0.55	ISO 10545-5 / IS 13630 -14
13	Coefficient of Linear Thermal Expansion	Report value	Max, $9 \times 10^{-6} K^{-1}$	≤ $9 \times 10^{-6} K^{-1}$	ISO 10545-8/ IS 13630-4
14	Thermal Shock Resistance	Report result	10 cycles Min	No Damage	ISO 10545-9 / IS 13630 -5
15	Crazing Resistance of Glazed Tiles	Report result	4 cycles @7.5 bar Min	No Damage	ISO 10545-11/ IS 13630-9
16	<b>Chemical Property</b> (cleansers except to cleansing agents containing Hydrofloric acids and its compounds)				
a	Resistance to Staining - Glazed Tiles	Class 3	Class 1, Min	Class 3, (ISO)/ Class 1 (BIS)	ISO 10545-14 / IS 13630-8
b	Resistance to Household Chemicals and Swimming Pool water cleansers	GB	AA	GB/AA	ISO 10545-13 / IS 13630-8
c	Resistance to acids and alkalis (Glazed Tiles)	Report result	Report result	GA	ISO 10545-13 / IS 13630 -8
17	Color Resistance to UV light	Report result	-	No change in color	DIN 51094
18	Lead & Cadmium Release- for Glazed Tiles, where required	Report value	-	Nil	ISO 10545-15

\* ISO / IS technical specifications for Johnson tiles are applicable only for premium /1st Quality tile  
Please inspect all tiles prior to installation, company will not entertaining complaints once tiles are laid/ fixed

## PACKAGING DETAILS

Product	Nominal Size (cm)	No of Tiles/Box	Approx Area/Box (sq m)	Approx Weight/Box (kgs)	Approx Cartons/ 20' Container	Approx Area per Container (sq m)
Johnson 30x60 Digital Wall Tiles	30x60	5	0.90	14	1928	1735
Johnson 30x60 (HT Elevation)	30x60	5	0.9	15	1800	1620
Johnson 30x45 Digital Wall Tiles	30x45	6	0.81	11.8	2288	1853
Johnson 30x45 (HT Elevation)	30x30	5	0.68	10.5	2571	1735
Johnson 30x30 Matching / Coordinated Floor Tiles	30x30	10	0.9	12.50	2160	1944

## YOU CAN ALSO REACH US AT

Region	Branch	Tel.:
East	Kolkata	033-46021880
	Bhubaneswar	0674 6539836/37/2430240
	Siliguri	9836065812
	Guwahati	8135846661/7575900492
	Ranchi	9576038118
West	Mumbai	022-40647500
	Thane	022-25867600 / 666
	Pune	020-41301164 / 31
	Aurangabad	8669600748
	Ahmedabad	079-48480010
	Raipur	0771-4919129
	Indore	0731-4007441
North	Jalandhar	0182-4505038 / 39
	Chandigarh	0172-4697100
	Delhi	011-49526600

Region	Branch	Tel.:
North	Jaipur	0141-2368329
	Lucknow	0522-2721699
	Varanasi	0542-2222620
	Patna	9576038781
	Bengaluru	080-22234310 / 080-22234330
South	Hyderabad	040-29802270 / 71 / 72
	Vijayawada	9666429666
	Vishakhapatnam	0891-2796376
	Tirupati	9121228960
	Kochi	0484-4871277
	Kozhikode	0422-4382698
	Thiruvananthapuram	0471-2720141
	Chennai	044-28544116 / 28541881
	Coimbatore	0422-4382698
	Madurai	0452-4355584 / 4355594
	Trichy	9486718544

## EXPERIENCE CENTERS

Location	Address	Tel.:
Kolkata	HOUSE OF JOHNSON - 83 JBS Haldane Avenue, TOPSIA Trinity towers Kolkata - 700046	033-46021880
Guwahati	HOUSE OF JOHNSON - 1st Floor, Above Royal Riders Honda, Near Rahul Kata, Pub Bragaon, Garchuk, Guwahati - 781035	7575900492
Bhubaneswar	HOUSE OF JOHNSON - Ray Tower, 1st Floor, N4/237, Indradhanu market, IRC Village, Nayapalli, Bhubaneswar, Orissa - 751015	0674 6539836/37/2430240
Patna	HOUSE OF JOHNSON - SK Builders and colonizer Pvt.Ltd.,1st Floor, SK Palace, Saguna more, Bihar - 801503.	9702651243
Chandigarh	HOUSE OF JOHNSON - SCO 214, sector14, Panchkula, Haryana - 134109	0172-4637724
Delhi	HOUSE OF JOHNSON - First & Mezzanine Floor, B-1/G-3, Mohan Industrial Estate, Mathura Road, New Delhi - 110094.	11-49526600
Lucknow	HOUSE OF JOHNSON - 1st Floor, Prithvi Ratan Height,Plot No CP-4, Vijayanagar khand - 3, Gomtinagar Yojna, Lucknow - 226028	0522-2721699
Varanasi	HOUSE OF JOHNSON - Ashakunj, 1st floor, D59/103 D4, Opp Siddharth Complex, Sigra Mehmoorganj Road, Varanasi - 221010	0542-2222620
Aurangabad	House Of Johnson Aurangabad - Gut No 16/44, NH-211, Near Balapur Phata, Near Ramkisan Lawns, Beed Bypass Road Aurangabad 431005	8669600748
Pune	HOUSE OF JOHNSON - Sable House, Poona Snuff Factory, Sr. No 11A, Plot 408/4/5, Satara Road, Gultekadi, Pune - 411037	7350009364
Thane	HOUSE OF JOHNSON - Shop No.5, Gr.Floor, Cosmos Jewels, Near Dmart, Anand Nagar, Ghodbunder Road, Thane West - 400615	8424003247
Mumbai - Andheri	HOUSE OF JOHNSON - 1st flr, Bonanza, Sahar Plaza, Nr Hotel Kohinoor continental, J B Nagar, Andheri Kurla Road, Andheri East, Mumbai - 400059	8108030975
Ahmedabad	HOUSE OF JOHNSON - F 106-107, Shivalik Plaza, IIM Road, Panjrapole Cross Road, Ahmedabad, Gujarat - 380015	079-48480010
Indore	HOUSE OF JOHNSON - Shop No 5, 6, 7 and 8, Upper Ground Floor, Exotica, Shalimar Township, Village Niranjapur, A. B. Road, Indore, Madhya Pradesh - 452001	0731-4007441
Raipur	HOUSE OF JOHNSON - 2nd Floor, MM Silver Plaza, Opp Udyog Bhawan, Ring Road - 1, Raipur, Chattisgarh - 492001	771-4919129
Coimbatore	HOUSE OF JOHNSON - Elysium Towers, Park Gate Rd, No. 21, ATT Colony, Gopalapuram, Coimbatore - 641018	0422-4382698
Chennai	HOUSE OF JOHNSON - 82, 84 & 86 Bascon Maeru, 1st floor, Kodambakkam High Road, Nungambakkam, Chennai - 600034	044-48611632
Kochi	HOUSE OF JOHNSON - Door no. 11/300 f, Next to VTJ Hyundai, NH 47 Kundanoor, Maradu, Kochi, Emakulam - 682304	0484-4871277
Kozhikode	HOUSE OF JOHNSON - Tilal Tower, Near Nexa Showroom, Kudilthod, Malaparamba bypass, Kozikode, Kerala - 673017	0495-2357505
Thiruvananthapuram	HOUSE OF JOHNSON -1st Floor, Sreedhanya Apex, TC 22/3720 (4) Vellayambalam, Sasthamangalam PO, Thiruvananthapuram, Kerala - 695010	0471-2720141
Bengaluru	HOUSE OF JOHNSON - No.39, Rajaram Mohan Roy Road , Opp. Kanteerava indoor Stadium, Bengaluru - 560027	080-22234310/080-22234330
Bengaluru	HOUSE OF JOHNSON - Dodda Banaswadi, Opp. New Baldwin Residential School, Bengaluru-560043	080-41692976 / 41692060
Hyderabad	HOUSE OF JOHNSON - SP Jubilee Crown (3rd Floor) Plot - 1270, Road No.36, Jubilee Hills, Hyderabad - 500033	8897525143

For address and contact numbers of our Johnson Exclusive Showrooms and Authorized Retailers, please visit our website [www.hrjindia.com](http://www.hrjindia.com)



**Toll Free No.:** 1800-210-7484

**WhatsApp No.:** +91 84510 57484

**Email:** tiles.customercare@prismjohnson.in

**For Export Enquires, Email:**  
exports.customercare@prismjohnson.in

## **PRISM JOHNSON LIMITED**

### **H & R JOHNSON (INDIA) DIVISION**

#### **Corporate Office:**

7th Floor, Windsor, C. S. T. Road, Kalina,  
Santacruz (East), Mumbai - 400 098, India.

**Tel:** +91-22-40647300

**Website:** www.hrjohnsonindia.com

**Registered Office:** 305, Laxmi Niwas Apartments, Ameerpet  
Hyderabad - 500016, Telangana, India.

**Download App**



HRJIndia @hrjohnsonofficial Hrjohnsonindia hrjohnson\_india

h-&-r-johnson-india-prism-johnson-limited HRJohnsonIndia1