



a
thing of
beauty.
a joy
forever.

Kajaria
ETERNITY
tiles forever

FULLBODY CATALOGUE
600x1200mm, 800x800mm & 600x600mm

TERRAZZO BY ETERNITY

FULL BODY TILES

A design that speaks a language of the years gone by.

Terrazzo has an aesthetic appeal that will make you take a step back and admire the artistry of the tile. With their timeless beauty, these exquisite mosaics are now returning to the current times.

Terrazzo is a versatile yet elegant pattern that complements any environment it is in, with a charming randomness in the arrangement of the tiny coloured pieces over a larger neutral coloured tile.



TERRAZZO BY ETERNITY

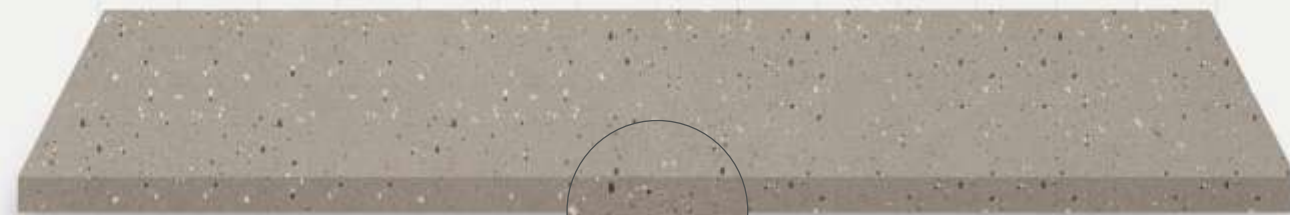
FULL BODY TILES

600x1200 mm

600x600 mm

Matt | Polish | Premium Polish | Premium Matt

The artistry of Terrazzo tiles is captured in two sizes: 600x600 mm and 600x1200 mm. The Matt finishes allow for a sophisticatedly muted appearance of the tile, blending in seamlessly in any space that it is set in. The Polished surfaces provide a reflective and glossy look that adds a shiny charm to any space. Versatility meets timeless style, in every Terrazzo style.



FULL BODY

Features



Scratch Resistant



Stain Resistant



Fire Resistant



High Abrasion Resistance



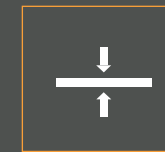
Easy Installation



Chemical Resistant



Zero % Water Absorption



9mm Thickness



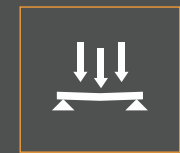
Thermal Resistant



Zero Maintenance



Easy To Clean



High Flexural Strength



The Palette

BIANCO

CREMA

ASH

NATURALE

GREY

TERRAZZO | FULLBODY
600x1200 mm & 600x600 mm

Kajaria
ETERNITY
tiles forever



TERRAZZO BIANCO | 600X600 MM | PREMIUM POLISH

TERRAZZO BIANCO



For wall application



For floor application

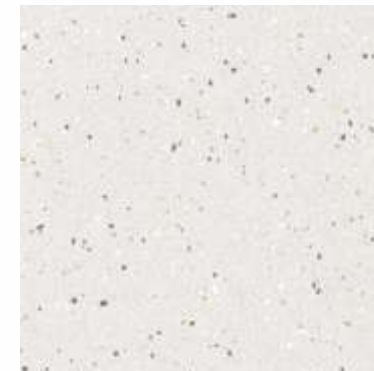


Fine detailing



Stain resistant

Available In :
600X600 MM



TERRAZZO BIANCO
PREMIUM POLISH
PREMIUM MATT

600X1200 MM



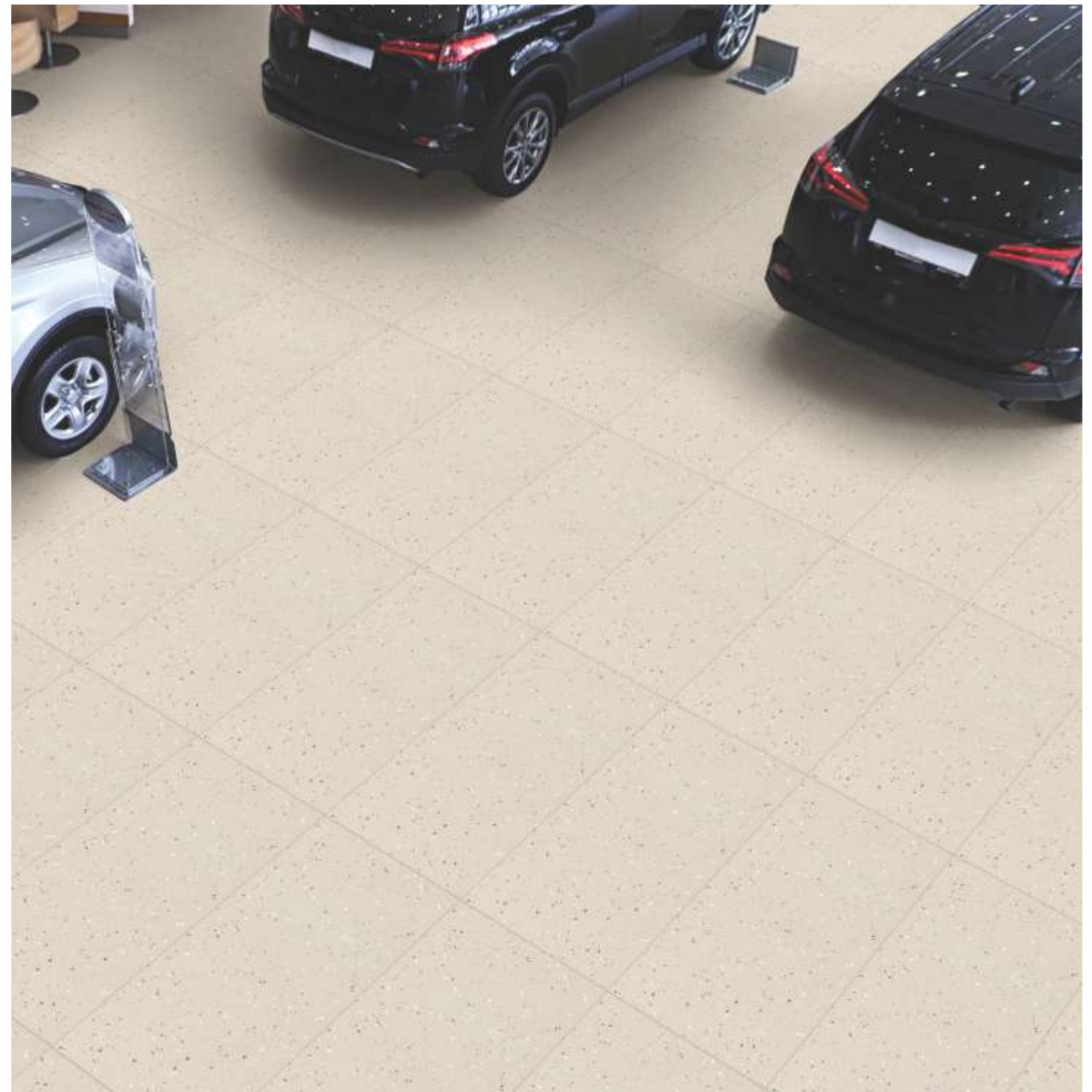
TERRAZZO BIANCO

PREMIUM POLISH
PREMIUM MATT



TERRAZZO | FULLBODY
600x1200 mm & 600X600 mm

Kajaria
ETERNITY
tiles forever



TERRAZZO CREMA | 600X1200 MM | PREMIUM MATT

TERRAZZO CREMA



For wall application



For floor application

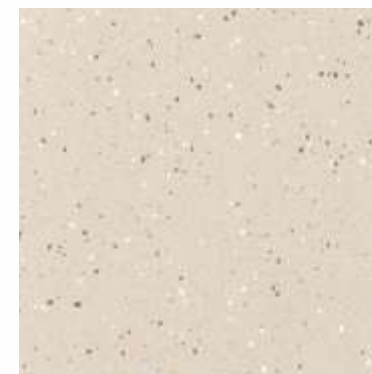


Fine detailing



Stain resistant

Available In :
600X600 MM



TERRAZZO CREMA
PREMIUM POLISH
PREMIUM MATT

600X1200 MM



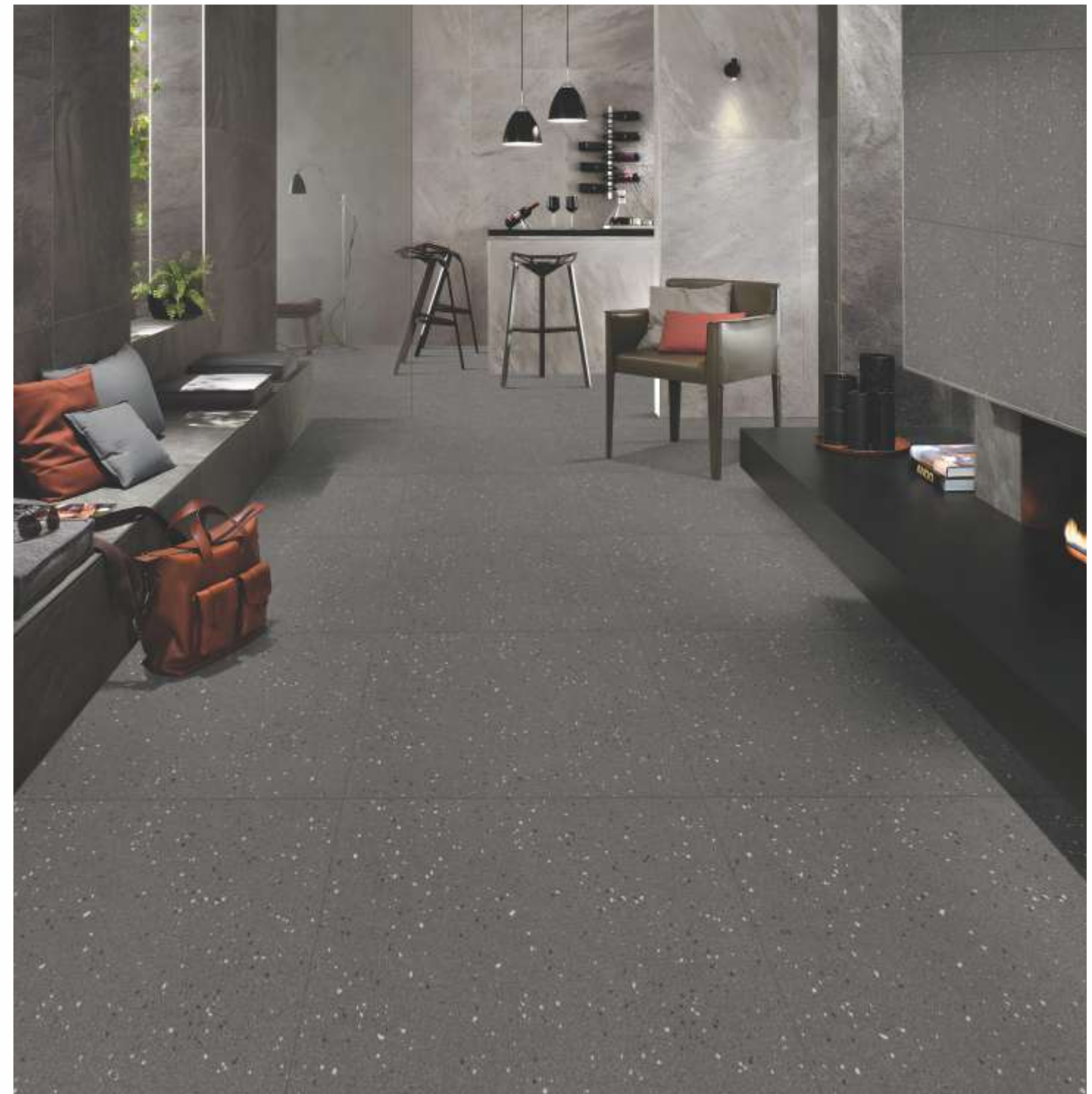
TERRAZZO CREMA

PREMIUM POLISH
PREMIUM MATT



TERRAZZO | FULLBODY
600x1200 mm & 600x600 mm

Kajaria
ETERNITY
tiles forever



TERRAZZO ASH | 600X600 MM | MATT

TERRAZZO ASH



For wall application



For floor application

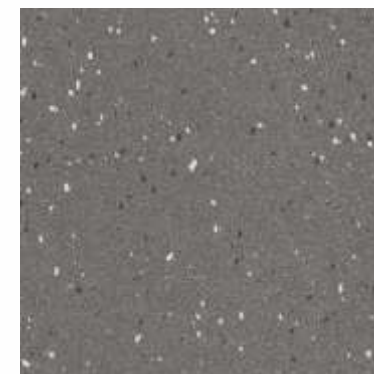


Fine detailing



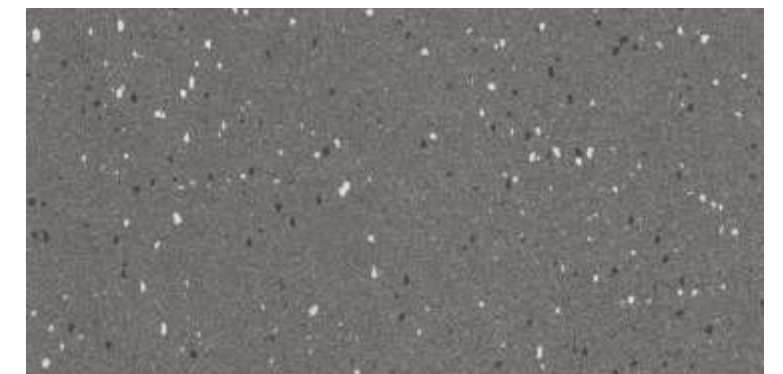
Stain resistant

Available In :
600X600 MM



TERRAZZO ASH

600X1200 MM



POLISH
MATT

TERRAZZO ASH

POLISH
MATT



TERRAZZO | FULLBODY
600x1200 mm & 600X600 mm

Kajaria
ETERNITY
tiles forever



TERRAZZO NATURALE | 600X600 MM | POLISH

TERRAZZO NATURALE



For wall application



For floor application

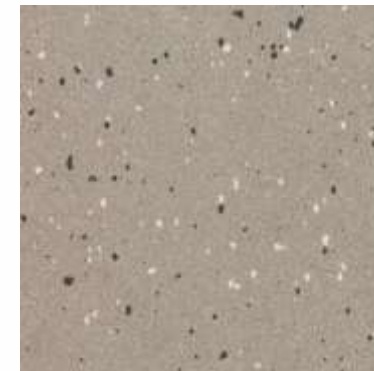


Fine detailing



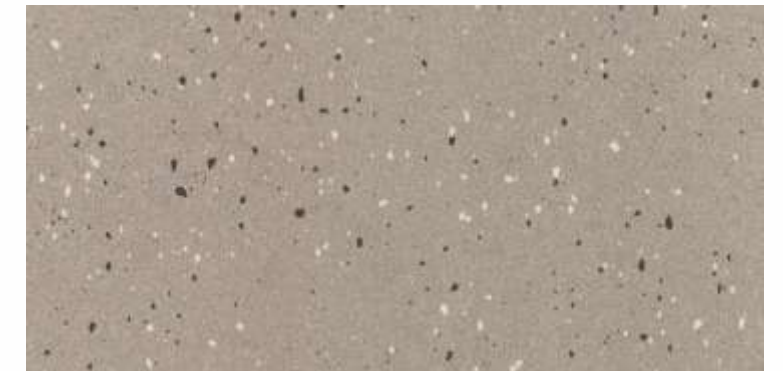
Stain resistant

Available In :
600X600 MM



TERRAZZO
NATURALE

600X1200 MM



POLISH
MATT

TERRAZZO
NATURALE

POLISH
MATT



TERRAZZO | FULLBODY
600x1200 mm & 600x600 mm

Kajaria
ETERNITY
tiles forever

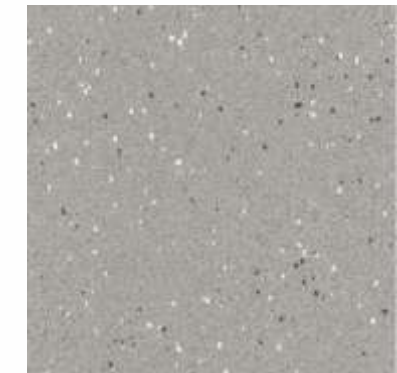


TERRAZZO GREY | 600x600 MM | MATT

TERRAZZO GREY

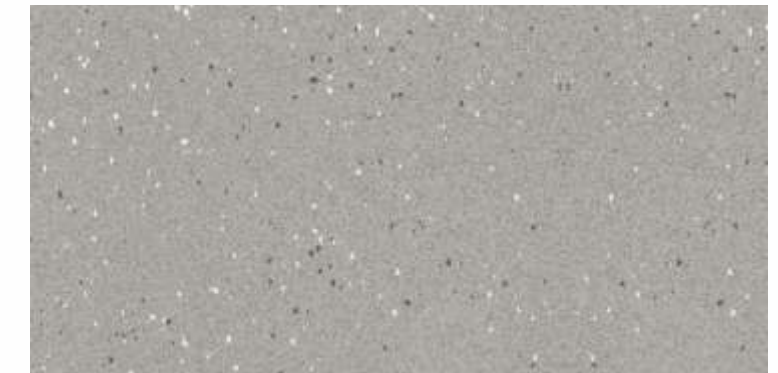
- For wall application
- For floor application
- Fine detailing
- Stain resistant

Available In :
600x600 MM



TERRAZZO GREY

600x1200 MM



TERRAZZO GREY

POLISH MATT

POLISH MATT





Kajaria
ETERNITY
tiles forever

DELPHI

FULL BODY

600x1200 mm
800x800 mm
600x600 mm



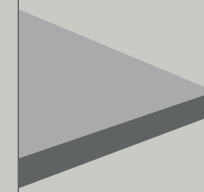
No Germs & Fungus, Less Health Issues | Get Rid of the Odours
Various Applications | Improves Quality of Life

Kajaria Eternity DELPHI Series comes with E-Shield protection, These Vitrified matt tiles is an innovative product made from special ingredients with anti-microbial treatment that inhibits growth of germs like bacteria and fungus.

This full body product with skid resistant property can be safely used in hospitals, schools, residential areas, offices or any other commercial spaces, where longevity and hygiene is paramount.

FULL BODY

These tiles are ideal for zones with heavy footfall because even after extended use, their colour remains the same.



SKID RESISTANT

A versatile surface with skid resistant property makes these tiles perfect for zero slippage on slopes of upto 25°.



GERM FREE (99.9%)

A specially formulated anti-microbial glaze used during the manufacturing process enables these tiles to prevent habitation of germs like bacteria and fungus, making them an ideal choice for today's health-conscious consumers.

***Anti Skid & Germ free Property is applicable in Matt tiles only.**

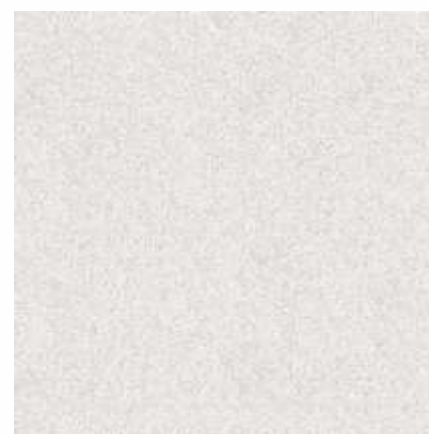
DELPHI | FULLBODY
 600x1200 mm | 800x800 mm | 600X600 mm

Kajaria
ETERNITY
 tiles forever



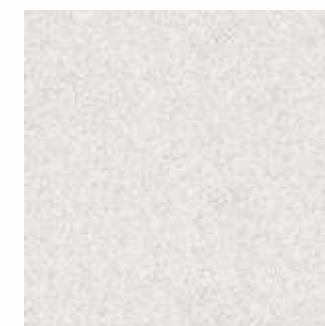
DELPHI BIANCO | 600X600 MM | PREMIUM POLISH

Available In :
 800X800 MM



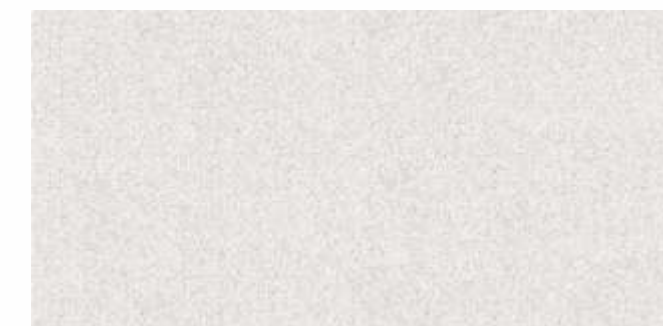
DELPHI
 BIANCO

600X600 MM



PREMIUM POLISH
 PREMIUM MATT

600X1200 MM



DELPHI
 BIANCO

PREMIUM POLISH
 PREMIUM MATT

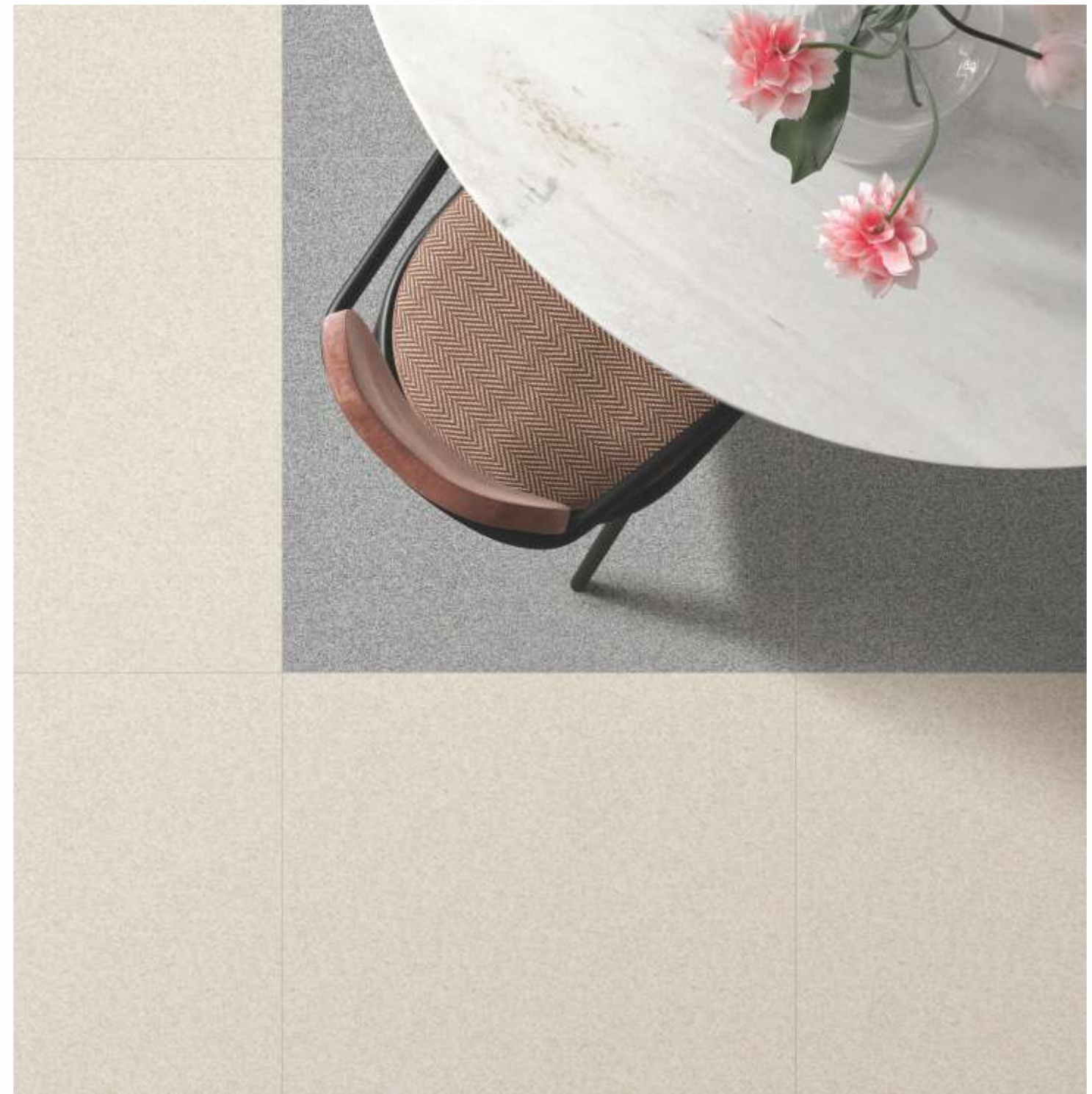
DELPHI BIANCO

- 
 For wall application
- 
 For floor application
- 
 Fine detailing
- 
 Stain resistant



DELPHI | FULLBODY
 600x1200 mm | 800x800 mm | 600X600 mm

Kajaria
ETERNITY
 tiles forever



DELPHI CREMA | 800X800 MM | PREMIUM MATT

Available In :
 800X800 MM



DELPHI
 CREMA

600X600 MM



PREMIUM POLISH
 PREMIUM MATT

600X1200 MM



DELPHI CREMA
 PREMIUM POLISH
 PREMIUM MATT

DELPHI
 CREMA

PREMIUM POLISH
 PREMIUM MATT

DELPHI CREMA



For wall application



For floor application



Fine detailing



Stain resistant



DELPHI | FULLBODY
600x1200 mm | 800x800 mm | 600X600 mm

Kajaria
ETERNITY
tiles forever



Available In :

DELPHI COTTO | 600X600 MM | POLISH

DELPHI COTTO



For wall application



For floor application



Fine detailing



Stain resistant

600X600 MM

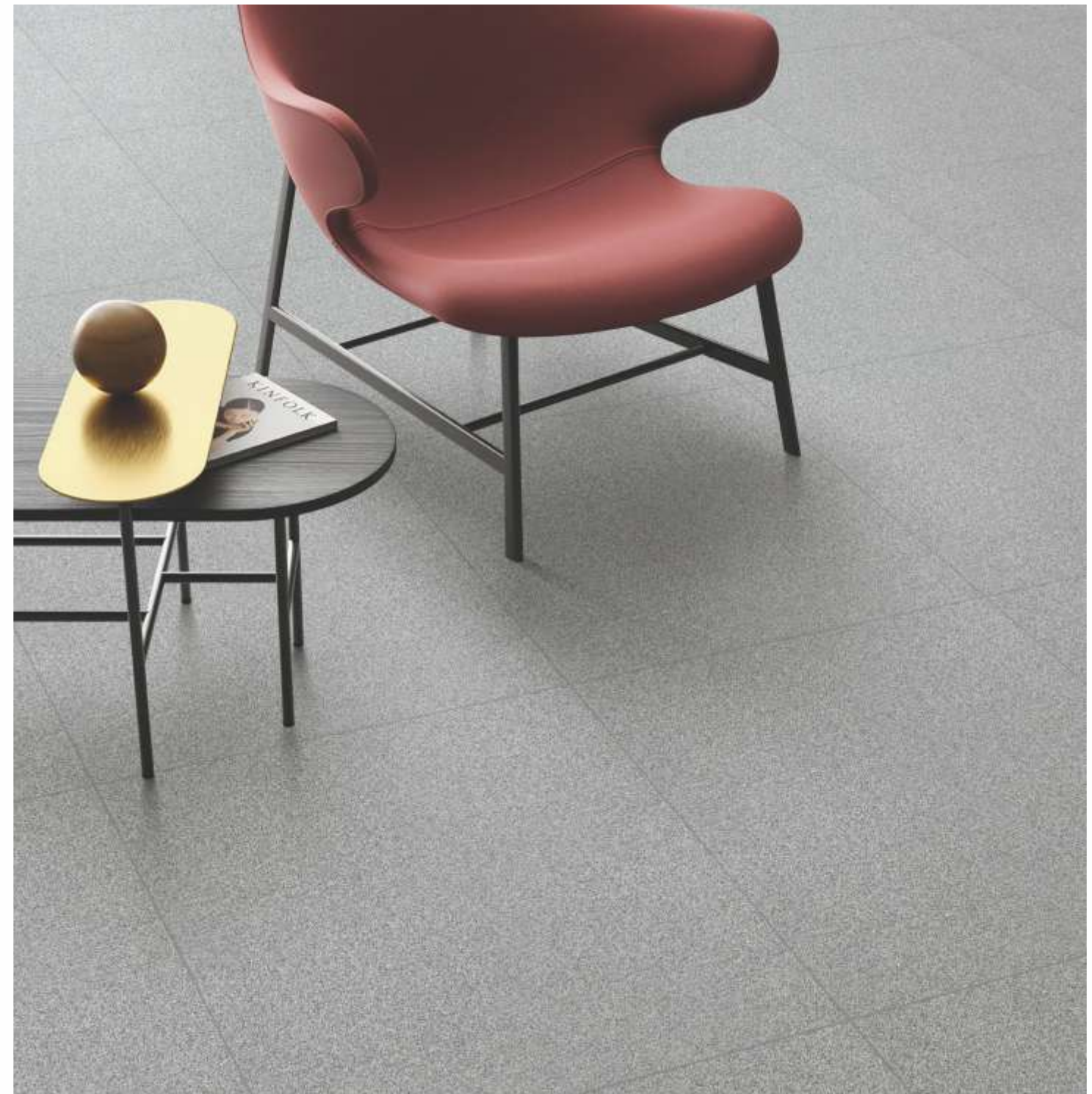


DELPHI
COTTO

POLISH
MATT

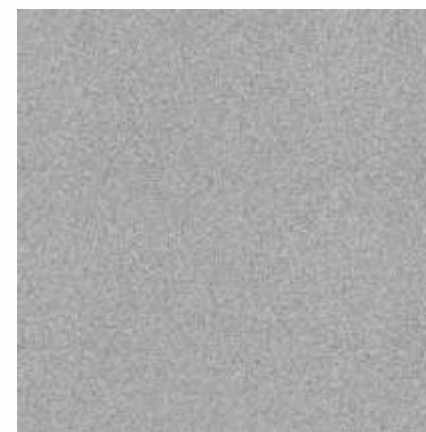
DELPHI | FULLBODY
600x1200 mm | 800x800 mm | 600x600 mm

Kajaria
ETERNITY
tiles forever



DELPHI GREY | 800X800 MM | MATT

Available In :
800X800 MM



DELPHI GREY

MATT

600X600 MM



DELPHI GREY

POLISH
MATT
40

600X1200 MM



DELPHI GREY

POLISH
MATT

DELPHI GREY



For wall application



For floor application



Fine detailing

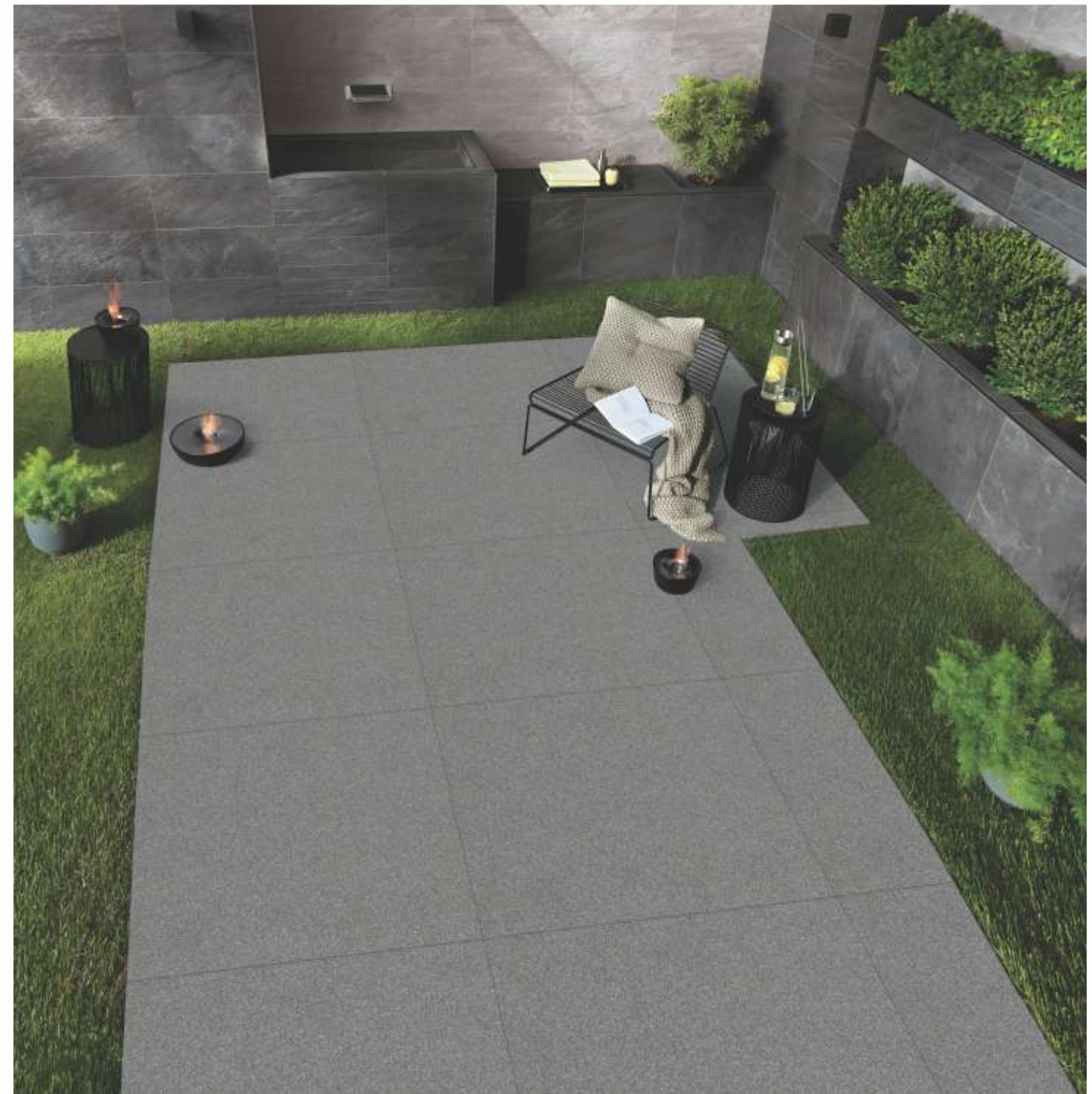


Stain resistant



DELPHI | FULLBODY
 600x1200 mm | 800x800 mm | 600X600 mm

Kajaria
ETERNITY
 tiles forever



DELPHI GRIS | 800X800 MM | MATT

Available In :
 800X800 MM



DELPHI GRIS

600X600 MM



DELPHI GRIS

600X1200 MM



DELPHI GRIS

POLISH
 MATT

DELPHI GRIS



For wall application



For floor application



Fine detailing



Stain resistant



DELPHI | FULLBODY
600x1200 mm | 800x800 mm | 600X600 mm

Kajaria
ETERNITY
tiles forever



DELPHI MOKA | 800X800 MM | MATT

Available In :

DELPHI MOKA

-  For wall application
-  For floor application
-  Fine detailing
-  Stain resistant

600X600 MM



DELPHI MOKA

600X1200 MM



DELPHI MOKA

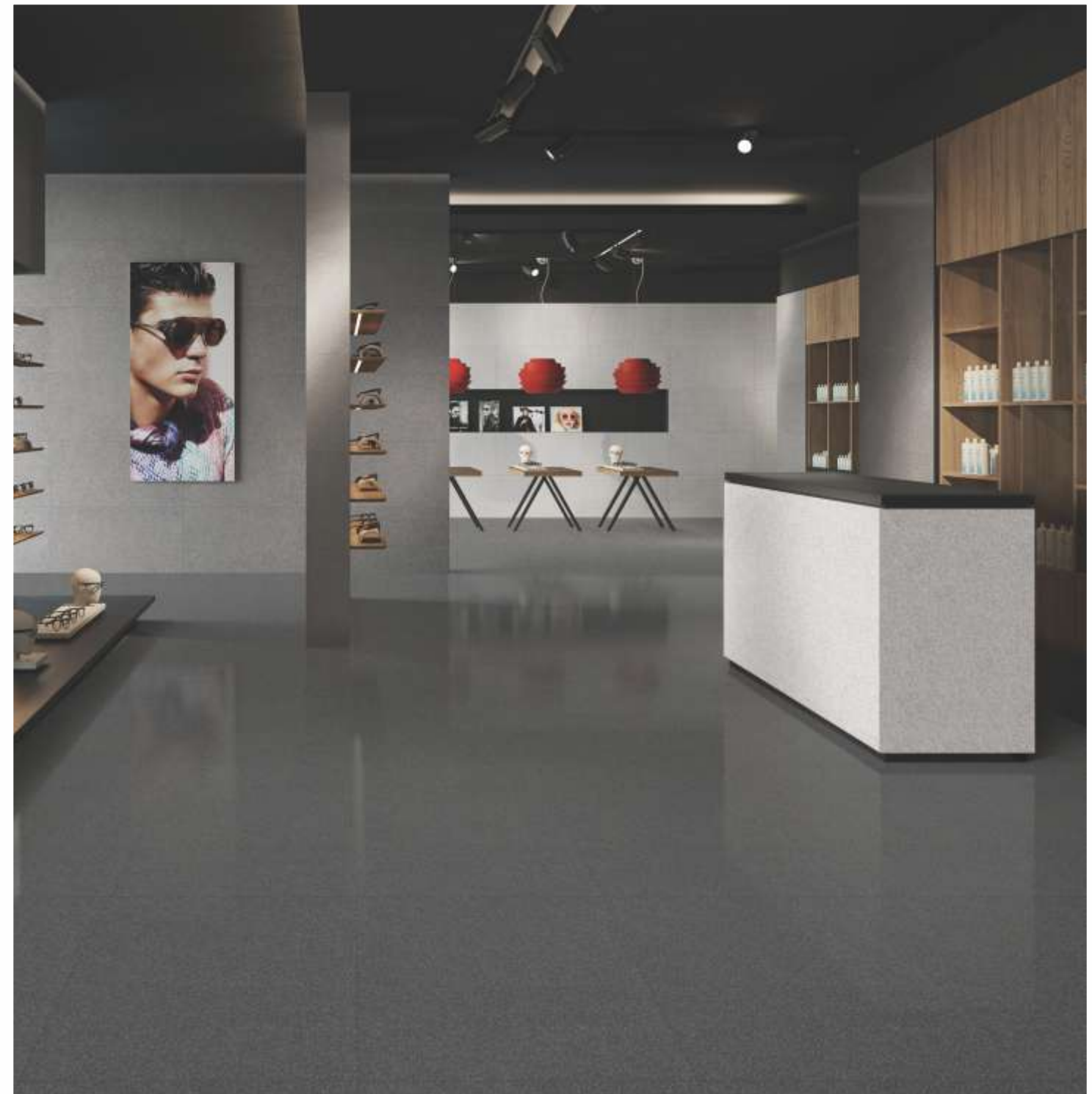
POLISH
MATT

POLISH
MATT



DELPHI | FULLBODY
600x1200 mm | 800x800 mm | 600X600 mm

Kajaria
ETERNITY
tiles forever



DELPHI NERO | 600X600 MM | POLISH

Available In :

DELPHI NERO



For wall application



For floor application



Fine detailing



Stain resistant

600X600 MM



**DELPHI
NERO**

**POLISH
MATT**

DELPHI | FULLBODY
600x1200 mm | 800x800 mm | 600X600 mm

Kajaria
ETERNITY
tiles-forever



DELPHI TAUPE | 600X600 MM | MATT

Available In :
800X800 MM



DELPHI TAUPE

MATT

600X600 MM



DELPHI TAUPE

POLISH
MATT

600X1200 MM



DELPHI TAUPE

POLISH
MATT

DELPHI TAUPE



For wall application



For floor application



Fine detailing



Stain resistant



PACKING DETAILS

DIMENSIONS (MM)	NO. OF SLABS/BOX	COVERAGE AREA
600X1200	03	2.16 m ²
600X600	04	1.44 m ²
800X800	03	1.92 m ²

TECHNICAL SPECIFICATIONS

S.No	Technical Characteristics	* IS 15622:2017, *EN 14411:2016 & ISO 13006:2018 Group Bla (Annex G) Standard's Requirement	Kajaria Eternity Tile's Specifications	Test method
1.	Deviation in length & width	± 0.1 % ± 0.6 %/ ± 0.3 %	± 0.10 %	IS 13630-1 EN ISO 10545-2
2.	Deviation in thickness	± 5.0 %	± 4.00 %	IS 13630-1 EN ISO 10545-2
3.	Deviation in Straightness of sides	± 0.1 % ± 0.5 %/± 0.3 %	± 0.10 %	IS 13630-1 EN ISO 10545-2
4.	Deviation in Rectangularity	± 0.1 % ± 0.5 %/± 0.3 %	± 0.10 %	IS 13630-1 EN ISO 10545-2
5.	Deviation in Surface Flatness	± 0.5 % ± 0.5 %/± 0.4 %	± 0.15 %	IS 13630-1 EN ISO 10545-2
6.	Surface quality	95% of the tiles shall be free from visible defects	95% of the tiles shall be free from visible defects	IS 13630-1 EN ISO 10545-2
7.	Modulus of rupture	Avg. 35 N/mm ² individual Min 32 N/mm ²	≥ 40 N/mm ²	IS 13630-6 / EN ISO 10545-4
8.	Breaking strength	Minimum 1300 N	≥ 2000 N	IS 13630-6 / EN ISO 10545-4
9.	Bulk Density	Minimum 2.20 g/cc	≥ 2.25 g/cc	IS 13630-2
10.	Glossiness	Manufacture to state the class	Min 5 for Rustic/Matt/Satin Finish Min 90 for Polish Finish	Glossimeter 60 degrees
11.	Water Absorption	≤ 0.08 %, Individual Max 0.1% ≤ 0.5 %, Individual Max. 0.6 %	≤ 0.08 %, Individual Max 0.1%	IS 13630-2 / EN ISO 10545-3
12.	Resistance to surface abrasion of Glazed tiles	Minimum Class II Report abrasion class and cycles passed	PEI-Class III to Class IV	IS 13630-11 EN ISO 10545-7
13.	Thermal expansion from ambient temperature to 100 °C	Test method available	6x10 ⁻⁴ K ⁻¹ Maximum	IS 13630-4 EN ISO 10545-8
14.	Thermal shock resistance	10 cycles Minimum Test method available	10 cycles Minimum	IS 13630-5 EN ISO 10545-9
15.	Moisture expansion	Maximum 0.02 Millimeter/Metre Test method available	Nil	IS 13630-3 EN ISO 10545-10
16.	Crazing resistance (Glazed Tiles)	Passes 4 cycles at 7.5 kg/cm ² Required	Passes 4 cycles at 7.5 kg/cm ²	IS 13630-9 EN ISO 10545-11
17.	Frost resistance	Required	100 cycles Minimum	IS 13630-10 EN ISO 10545-12
18.	Resistance to Household Chemicals & Swimming Pool Salts #	Minimum Class AA Minimum GB	Minimum Class AA Minimum GB	IS 13630-8 EN ISO 10545-13
19.	Resistance to low & high concentration of acids & alkalis #	Manufacturer to state classification	Minimum Class AA Minimum GLB,GHB	IS 13630-8 EN ISO 10545-13
20.	Stain resistance**	Minimum Class 1 Minimum Class 3	Minimum Class 1 Minimum Class 3	IS 13630-8 EN ISO 10545-14
21.	Slipperiness	Test method available	≥ R-10 for Rustic/Matt/Satin Finish ≥ R-9 for Polish Finish	DIN 51130:2014
22.	Co-efficient of friction	Manufacture to state the class	≥ 0.32 for Rustic/Matt/Satin Finish > 0.20 for Polish Finish	ISO 10545-17
23.	Scratch hardness of surface(Moh's scale)	Minimum 5 Test method available	Min 6 for Rustic/Matt/Satin Finish Min 5 for Polish/Marbletech Finish	IS 13630-13 EN 101
24.	Impact Resistance	Minimum 0.55 Test method available	Min 0.55 & No identification of cracking	IS 13630-14 EN ISO 10545-5

Resistance to acids & alkalis (Exception of Hydrofluoric acid & its compounds)

** Vitrified tiles have resistance to most of the stains / chemicals but, it is recommended to take due care while laying and for day-to-day maintenance.

* Applicable in Gailpur plant only.

- Colours in the catalogue are as accurate as printing process allows. Please check actual tile sample before making the final selection.
- Sizes mentioned in the catalogue are nominal sizes only.
- No claim will be entertained once the tiles are fixed.
- For better laying, please follow the instructions on the packaging box.
- In case it is required to lay the tiles on wall or floor in STAGGERED PATTERN, then always lay them in Overlap 20:80 ratio, as shown in VISUAL 1 instead of Brick pattern (overlap 50:50 ratio), as shown in VISUAL 2.

Please make sure to check the shade/finish with the sales agent/dealer before making the final purchase because there might be variation in actual finish and that shown in the catalogue. The company will not bear any loss in such case.



VISUAL 1



VISUAL 2



DISPLAY CENTRE

North

CHANDIGARH:
SCO-8,1st floor, Sector 7C,
Madhya Marg, Chandigarh-160019
Phone: +91-172- 4631417
Mobile: 9779021253, 9779021262

DEHRADUN:

Fortuna Tower, 1078, First Floor,
Opp. IMA Blood Bank,
Chakrata Road Dehradun - 248001
Mobile: 7755001347, 9717795202
7755001346

JAIPUR:

G-1, G-2, Aishwarya Tower,
Near Hotel Hawa Mahal, Ajmer Road
Jaipur-302005, Rajasthan
Phone - +91-141 2223425, 9799495766

LUCKNOW:

7, Tajpuria palace, Faizabad Road,
Indira Nagar, Lucknow, Uttar Pradesh
Mobile: 9717795204,9956252777

VARANASI:

Rukmani Tower, N8/247-2K-1,
DLW, BHU Road, Newada, Sunderpur
Varanasi-221005, Uttar Pradesh
Mobile: 9794865554, 9005095500

Sales Representative

NORTH

GURGAON:

Mobile: 9779021270, 9779021267,
9779021264, 9779021255
9717795205

NOIDA:

Mobile: 9717795156, 9717795200,
9717795205

DELHI & FARIDABAD:

Mobile: 9560553304, 9717795029,
9717795192

KUMAON:

Mobile: 7755001348, 7755001349,
9717795202

WESTERN UP:

Mobile: 9717795202, 8800093020,
7755001348

HARYANA:

Mobile: 8295200155, 8295200410

South

BANGALORE:

Farah Icon, 119 2nd Floor,
Opp. New Pass Port Kendra, Lalbagh Road,
Bangalore-560027, Karnataka
Mobile: 9008402949, 9008016799

CHENNAI:

Old No.10, New No.46, Montieth Road Above Wait
Rose Super market
Egmore, Chennai - 600008.
Mobile: 9791178678, 9952094333

COIMBATORE:

1st Floor, No.57, Cowley Brown Road, Near Central
Library, R.S. Puram Coimbatore - 641002.
Mobile: 9629944454, 9677708080

COCHIN:

Door No. 48/557-C, MN Square
Near Gold Souk, NH By-Pass, Vyttila,
Cochin 682019, Kerala
Mobile: 9995868863, 9746473684, 7303663188

HYDERABAD:

#3 - 143, 1st Floor, Nirvana Building,
Kavuri Hills, Police Station Opp.Road, Madhapur
Hyderabad - 500081, Telangana
Mobile: 9000304996, 9000304992, 9000005383,
7680000890, 9000304997

LUDHIANA:

Mobile: 9779021270, 9779021267,
9779021264, 9779021255

HIMANCHAL PRADESH:

Mobile: 9779027169, 9779021253

JAMMU & KASHMIR:

Mobile: 9906906622, 9086410081

EAST

ASSAM:

Mobile: 9311299711, 9903234184

BIHAR:

Mobile: 9771458963, 9892408080

JHARKHAND:

Mobile: 9934011406, 8882918981

ORISSA:

Mobile: 9937185338, 9937285865,
8882918983

WEST BENGAL / KOLKATA:

Mobile: 9007011022, 9007011028,
9007062814

CENTRAL

CHHATTISGARH:

Mobile: 9981528088

RAIPUR:

Mobile: 9758598467, 9981528088

BILASPUR:

Mobile: 7898028779, 9981528088

BHOPAL:

Mobile: 9981528092

INDORE:

Mobile: 9630025576, 9981528089

West

MUMBAI:

B WING, 617-620, Bonanza,
Sahar Plaza Complex, 6th Floor,
M. V Road, Near Hotel Kohinoor
Continental, JB Nagar, Andheri East.
Mumbai - 400059, Maharashtra
Mobile: 8968586560, 9987789500

PUNE:

2nd Floor, Grace Platina,
Opp.Kumar Pacific Mall,
Shankar Seth Road,Pune - 411042
Mobile: 9730088497, 9730088498

WEST

AURANGABAD:

Mobile: 8600992620, 9730088497

GOA:

Mobile: 9665046116, 9730088497,
7028018708

NASIK:

Mobile: 8600992620, 9730088497,
7028030538

AHMEDABAD:

Mobile: 9998804440, 8511581725

NAGPUR:

Mobile: 9987538689, 9730088497

SOUTH

ANDHRA PRADESH:

Mobile: 9000300790

VIJAYWADA:

Mobile: 7680046467, 9000300790

Kajaria
ETERNITY
tiles forever

DECEMBER - 2022

Toll Free No. : 1800 309 309 | Email : info@kajariaeternity.com | For exports : global@kajariaeternity.com
Website : www.kajariaeternity.com